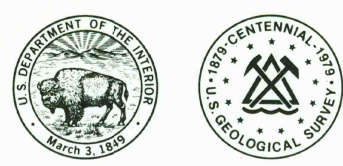
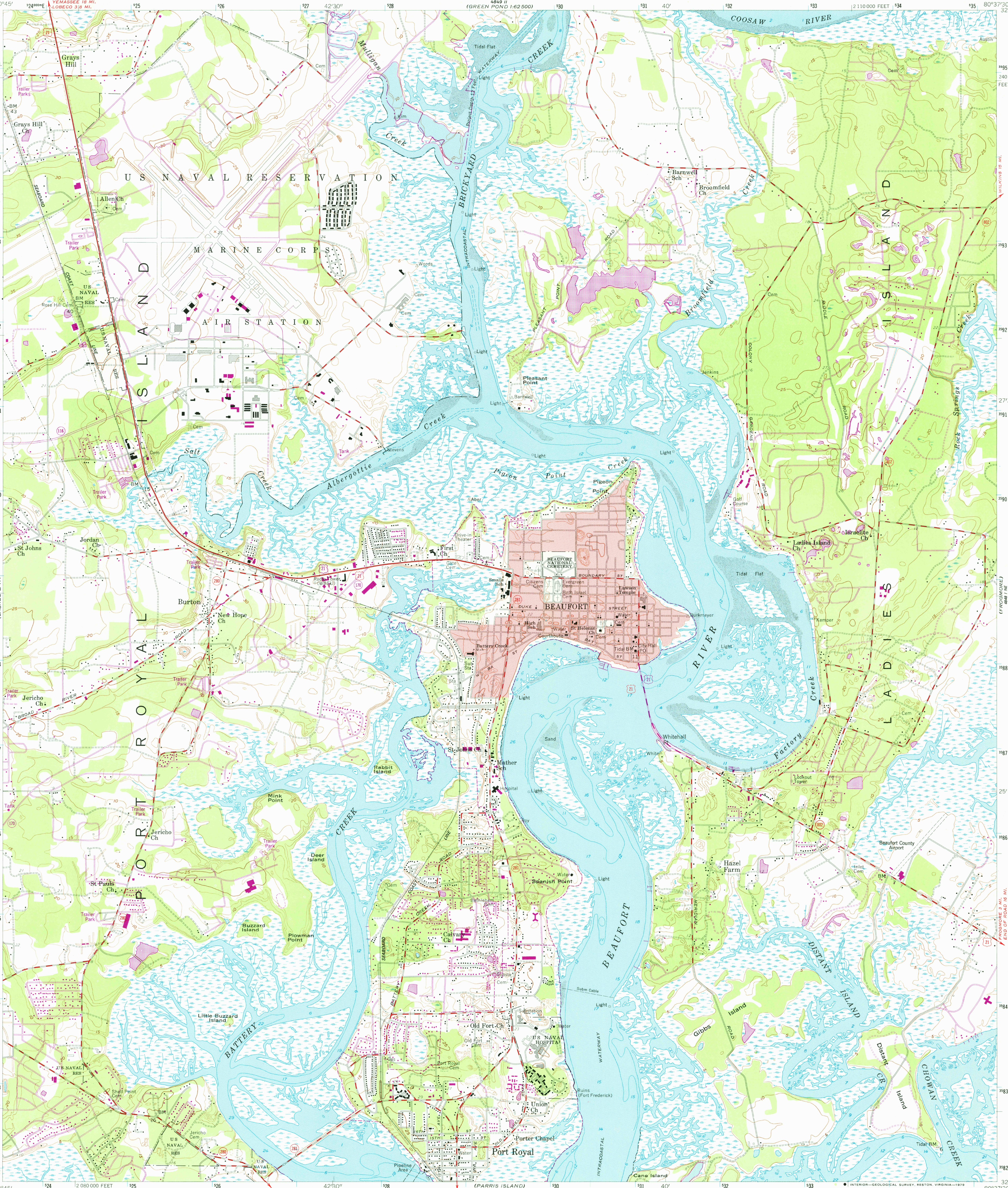


UNITED STATES
DEPARTMENT OF THE INTERIOR
GEOLOGICAL SURVEY



BEAUFORT QUADRANGLE
SOUTH CAROLINA - BEAUFORT CO.
7.5 MINUTE SERIES (TOPOGRAPHIC)



Mapped, edited, and published by the Geological Survey

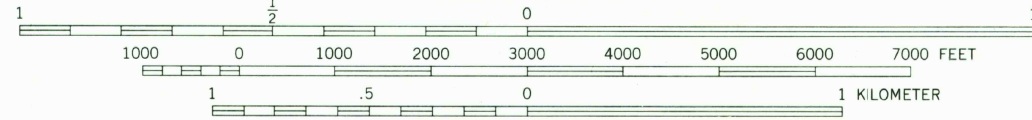
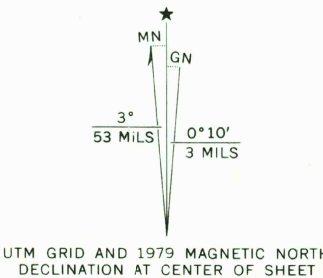
Control by USGS, USC&GS, USCE, and
South Carolina Geodetic Survey

Culture and drainage in part compiled from aerial photographs
taken 1951. Topography by planetable surveys 1958
Hydrography compiled from USC&GS charts 571 (1956) and
794 (1955)

Polycyclic projection. 1927 North American datum
10,000-foot grid based on South Carolina coordinate system,
south zone
1000-meter Universal Transverse Mercator grid ticks,
zone 17, shown in blue

Red tint indicates area in which only
landmark buildings are shown

Boundary lines shown in purple compiled from latest
information available from the controlling authority



CONTOUR INTERVAL 5 FEET
NATIONAL GEODETIC VERTICAL DATUM OF 1929
DEPTH CURVES AND SOUNDINGS IN FEET—DATUM IS MEAN LOW WATER
THE RELATIONSHIP BETWEEN THE TWO DATUMS IS VARIABLE
SHORELINE SHOWN REPRESENTS THE APPROXIMATE LINE OF MEAN HIGH WATER
THE AVERAGE RANGE OF TIDE IS APPROXIMATELY 7.4 FEET

THIS MAP COMPLIES WITH NATIONAL MAP ACCURACY STANDARDS
FOR SALE BY U. S. GEOLOGICAL SURVEY, RESTON, VIRGINIA 22092
A FOLDER DESCRIBING TOPOGRAPHIC MAPS AND SYMBOLS IS AVAILABLE ON REQUEST



ROAD CLASSIFICATION
Heavy-duty ——— Light-duty ———
Medium-duty ——— Unimproved dirt ———
U. S. Route ——— State Route ———

USGS
Historical File
Topographic Division

BEAUFORT, S. C.
N 3222.5—W 8037.5/7.5

SEP 13 1979

Boundary lines shown in purple compiled from latest
information available from the controlling authority
Revisions shown in purple compiled from aerial photographs
taken 1977 and other source data. This information
not field checked. Map edited 1979

1958
PHOTOREVISED 1979
DMA 4848 1 NW—SERIES Y846

2812