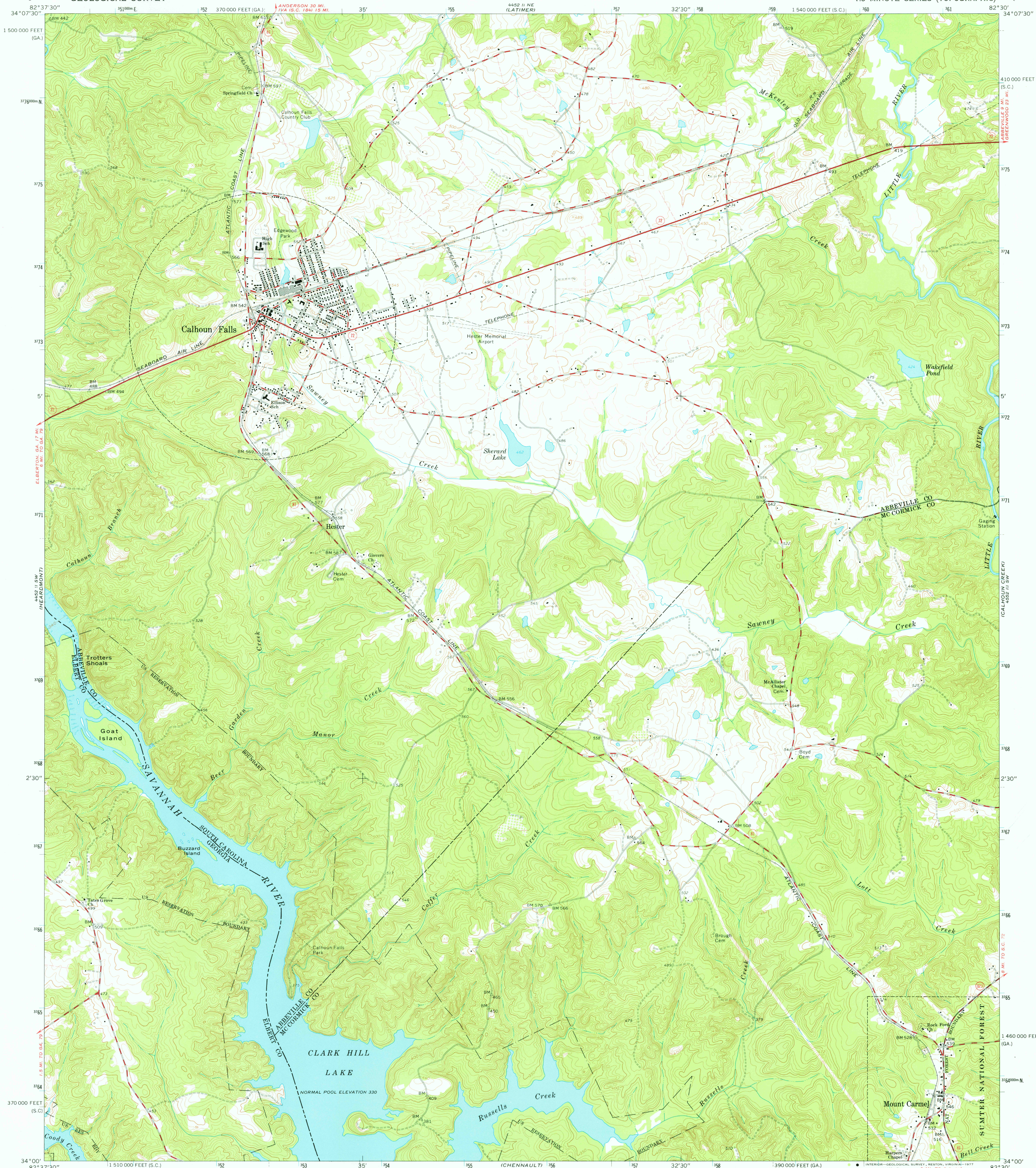
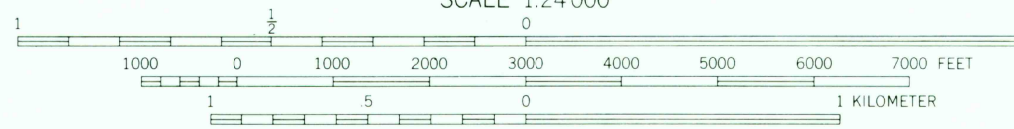
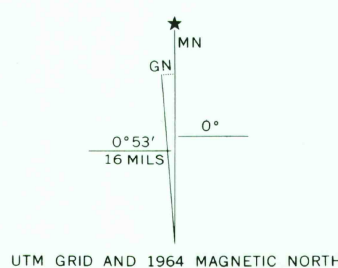


UNITED STATES
DEPARTMENT OF THE INTERIOR
GEOLOGICAL SURVEY

CALHOUN FALLS QUADRANGLE
SOUTH CAROLINA-GEORGIA
7.5 MINUTE SERIES (TOPOGRAPHIC)



Maped, edited, and published by the Geological Survey
Control by USGS, USC&GS, USCE, and
South Carolina Geodetic Survey
Topography by photogrammetric methods from aerial
photographs taken 1962. Field checked 1964
Polyconic projection. 1927 North American datum
10,000-foot grid based on South Carolina coordinate
system, north zone, and Georgia coordinate system, east zone
1000-meter Universal Transverse Mercator grid ticks,
zone 17, shown in blue
Fine red dashed lines indicate selected fence and field lines where
generally visible on aerial photographs. This information is unchecked
Reservation boundary from maps by the U. S. Corps of Engineers
National forest boundaries represent proclamation lines
and do not necessarily imply Federal jurisdiction



THIS MAP COMPLIES WITH NATIONAL MAP ACCURACY STANDARDS
FOR SALE BY U. S. GEOLOGICAL SURVEY, RESTON, VIRGINIA 22092
A FOLDER DESCRIBING TOPOGRAPHIC MAPS AND SYMBOLS IS AVAILABLE ON REQUEST



USGS
Historical File
Topographic Division

CALHOUN FALLS, S. C. - GA.
N3400-W8230/7.5

1964
AMS 4452 II SE-SERIES V846

ROAD CLASSIFICATION
Heavy-duty ——— Light-duty ———
Medium-duty ——— Unimproved dirt ———
State Route

MAR 0 9 1977
2800