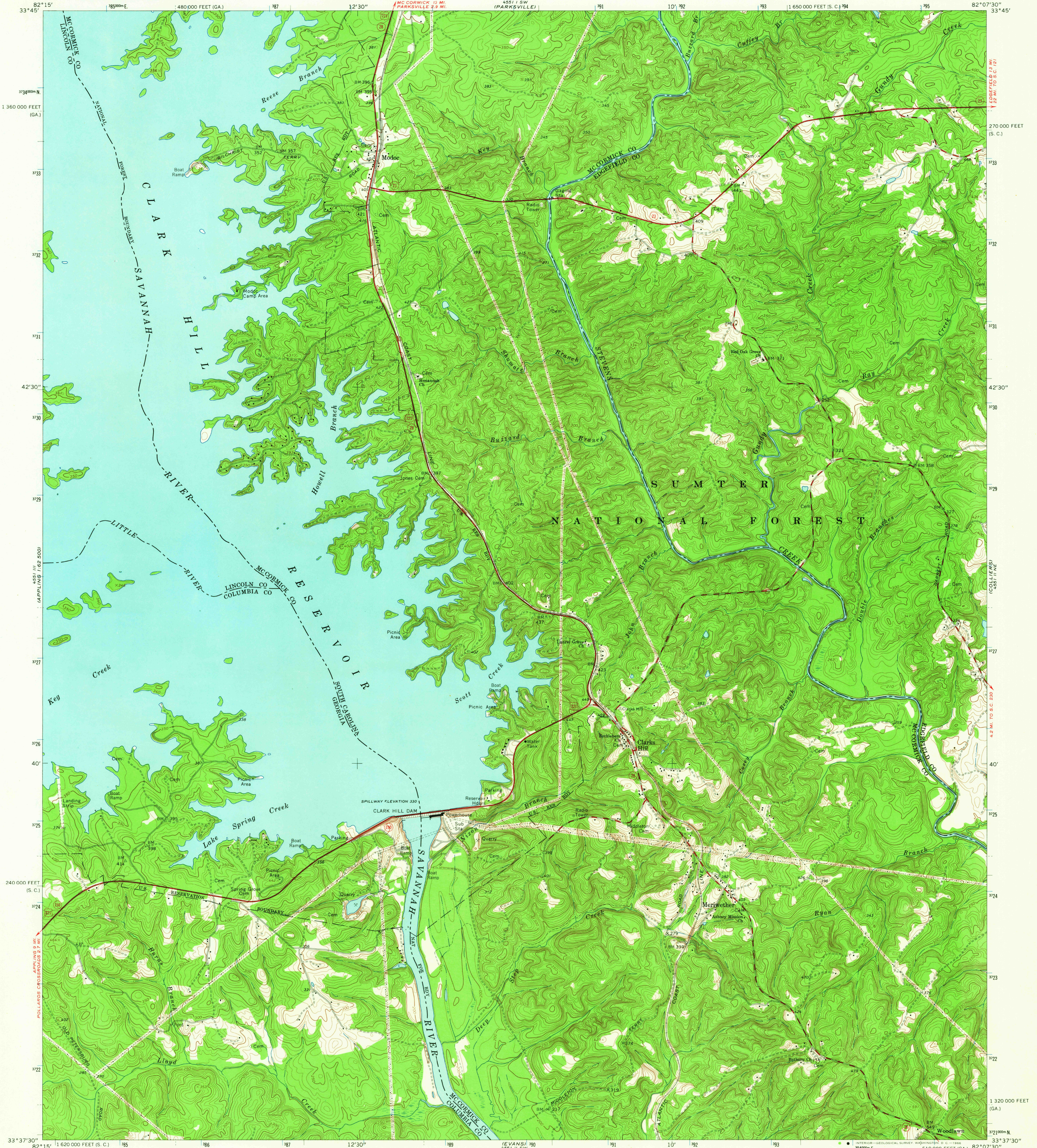
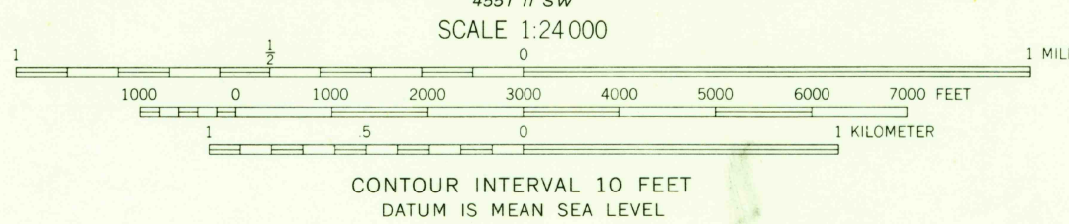
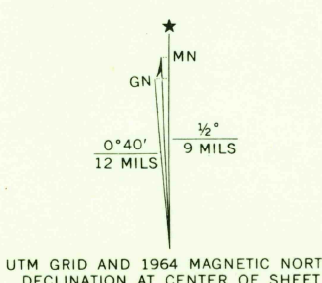


UNITED STATES
DEPARTMENT OF THE INTERIOR
GEOLOGICAL SURVEY

CLARKS HILL QUADRANGLE
SOUTH CAROLINA-GEORGIA
7.5 MINUTE SERIES (TOPOGRAPHIC)
NW/4 CLARKS HILL 15' QUADRANGLE



Mapped, edited, and published by the Geological Survey
Control by USGS, USC&GS, USCE, and South Carolina Geodetic Survey
Topography by photogrammetric methods from aerial photographs
taken 1962. Field checked 1964
Polyconic projection. 1927 North American datum
10,000-foot grids based on South Carolina coordinate system, north
zone and Georgia coordinate system, east zone
1000-meter Universal Transverse Mercator grid ticks, zone 17
shown in blue
U. S. Reservation boundary from maps by U. S. Corps of Engineers



CONTOUR INTERVAL 10 FEET
DATUM IS MEAN SEA LEVEL



U.S.G.S.
FILE COPY
TOPOGRAPHIC DIVISION

CLARKS HILL, S. C.-GA.
NW/4 CLARKS HILL 15' QUADRANGLE
N3337.5-W8207.5/7.5
1964
AMS 4551 II NW-SERIES V846

ROAD CLASSIFICATION
Heavy-duty ——— Light-duty ———
Medium-duty ——— Unimproved dirt ———
U. S. Route ——— State Route ———

3125