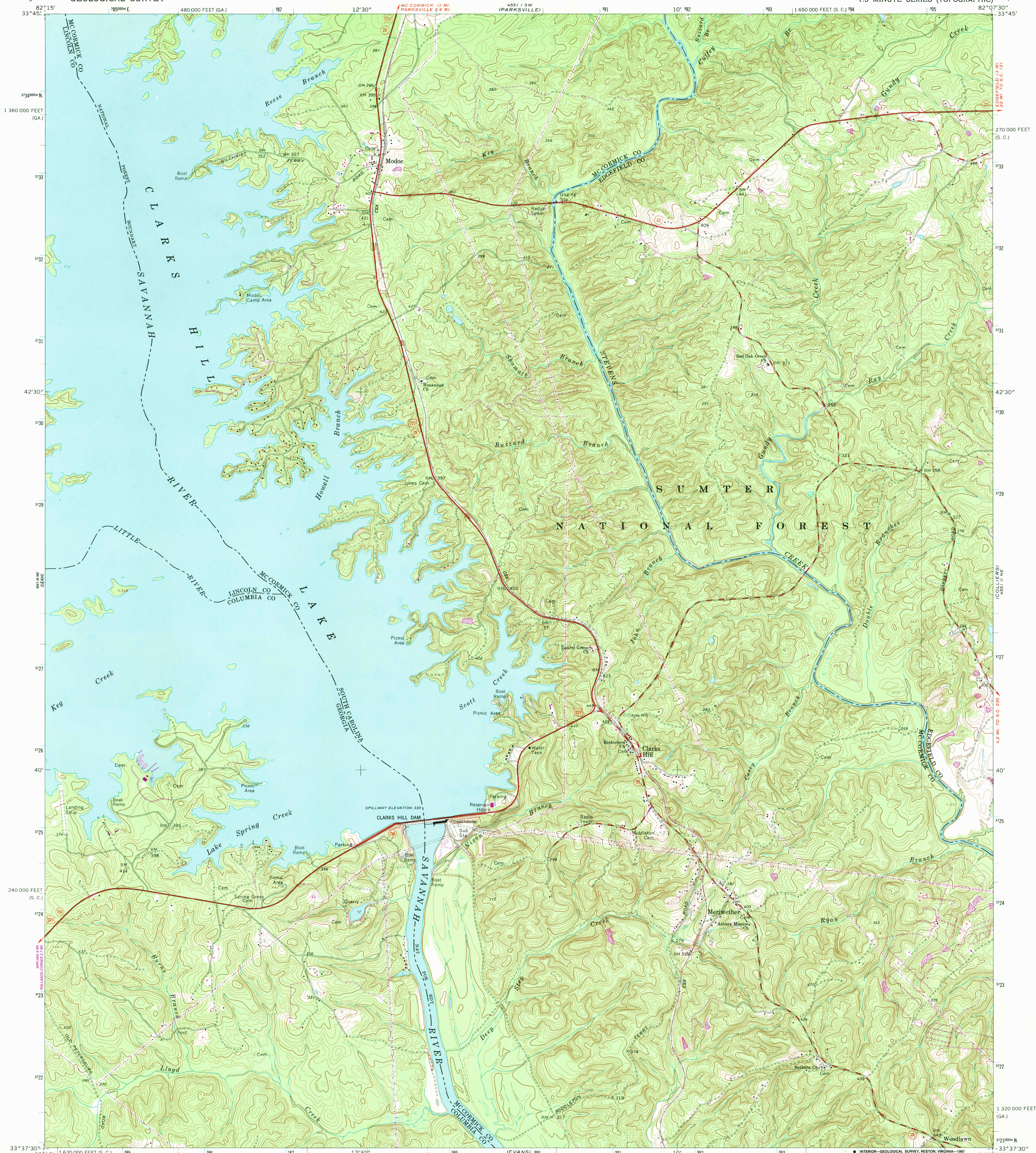


UNITED STATES  
DEPARTMENT OF THE INTERIOR  
GEOLOGICAL SURVEY

CLARKS HILL QUADRANGLE  
SOUTH CAROLINA-GEORGIA  
7.5 MINUTE SERIES (TOPOGRAPHIC)



Mapped, edited, and published by the Geological Survey

Control by USGS, NOS/NOAA, USCE, and South Carolina Geodetic Survey

Topography by photogrammetric methods from aerial photographs taken 1962. Field checked 1964

Polyconic projection. 10,000-foot grid ticks based on South Carolina coordinate system, north zone, and Georgia coordinate system, east zone

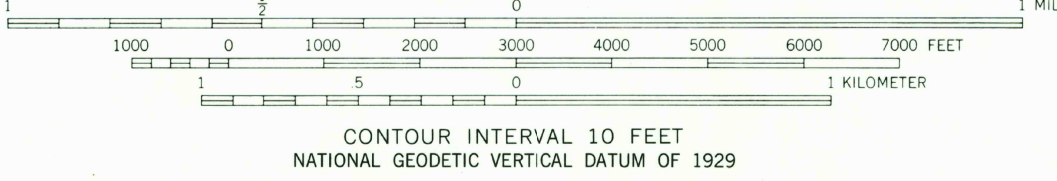
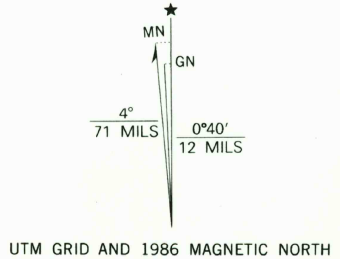
1000-meter Universal Transverse Mercator grid ticks, zone 17, shown in blue

1927 North American Datum

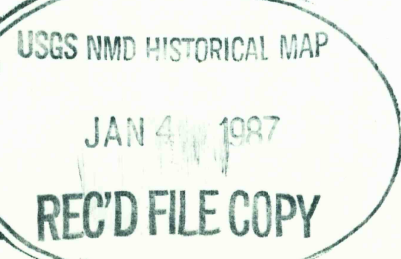
To place on the predicted North American Datum 1983 move the projection lines 12 meters south and 14 meters west as shown by dashed corner ticks

There may be private inholdings within the boundaries of the National or State reservations shown on this map

Revisions shown in purple and woodland compiled in cooperation with State of Georgia agencies from aerial photographs taken 1981 and other sources. This information not field checked  
Map edited 1986



THIS MAP COMPLIES WITH NATIONAL MAP ACCURACY STANDARDS  
FOR SALE BY U.S. GEOLOGICAL SURVEY  
DENVER, COLORADO 80225 OR RESTON, VIRGINIA 22092  
A FOLDER DESCRIBING TOPOGRAPHIC MAPS AND SYMBOLS IS AVAILABLE ON REQUEST



CLARKS HILL, S. C. - GA.  
33082-F2-TF-024

1964  
PHOTOREVISED 1986  
DMA 4551 II NW-SERIES V846

ROAD CLASSIFICATION  
Heavy-duty ——— Light-duty ———  
Medium-duty ——— Unimproved dirt ———  
U. S. Route ——— State Route ———