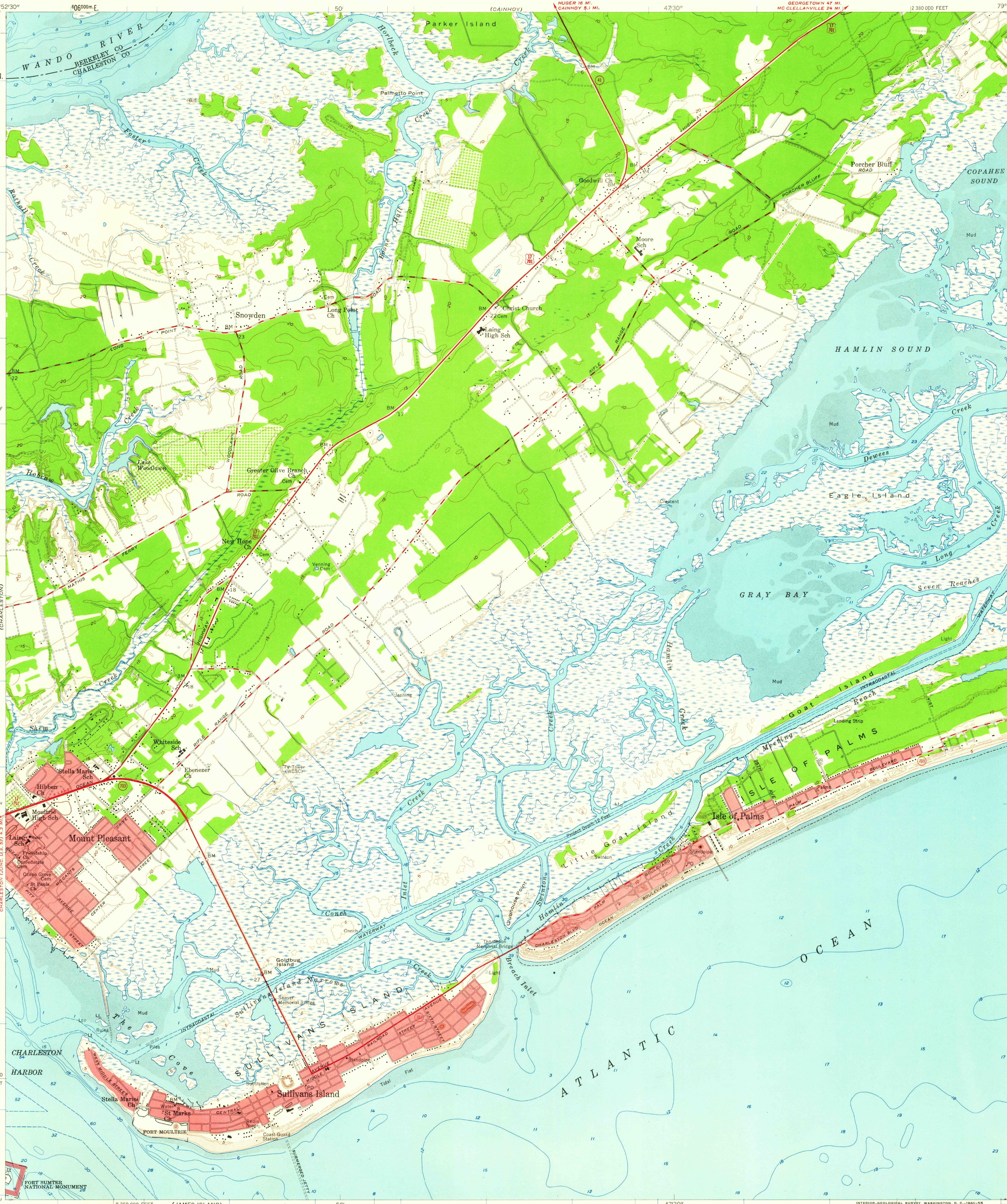


UNITED STATES
DEPARTMENT OF THE INTERIOR
GEOLOGICAL SURVEY

FORT MOULTRIE QUADRANGLE
SOUTH CAROLINA
7.5 MINUTE SERIES (TOPOGRAPHIC)



Mapped, edited, and published by the Geological Survey
Control by USGS, USC&GS, USCE, and South Carolina Geodetic Survey
Culture and drainage from controlled aerial photo mosaic
Aerial photographs taken 1957
Topography by planetable surveys 1958 - 1959
Hydrography compiled from USC&GS charts 470, 491, and 837 (1958), and 1239 (1957)
Polyconic projection. 1927 North American datum
10,000-foot grid based on South Carolina coordinate system, south zone
1000-meter Universal Transverse Mercator grid ticks, zone 17, shown in blue
Red tint indicates areas in which only landmark buildings are shown

SCALE 1:24,000
1 0 1000 2000 3000 4000 5000 6000 7000 FEET
1 KILOMETER
CONTOUR INTERVAL 5 FEET
DATUM IS MEAN SEA LEVEL
DEPTH CURVES AND SOUNDINGS IN FEET—DATUM IS MEAN LOW WATER
SHORELINE SHOWN REPRESENTS THE APPROXIMATE LINE OF MEAN HIGH WATER
THE MEAN RANGE OF TIDE IS APPROXIMATELY 5.2 FEET
THIS MAP COMPLIES WITH NATIONAL MAP ACCURACY STANDARDS
FOR SALE BY U. S. GEOLOGICAL SURVEY, WASHINGTON 25, D. C.
A FOLDER DESCRIBING TOPOGRAPHIC MAPS AND SYMBOLS IS AVAILABLE ON REQUEST

ROAD CLASSIFICATION
Heavy-duty ——— Light-duty ———
Medium-duty ——— Unimproved dirt ———
U. S. Route ——— State Route ———
U.S.G.S. FILE COPY
TOPOGRAPHIC DIVISION
FORT MOULTRIE, S. C.
N 3245—W 7945/7.5
1959

JAN - 7 1960
2550