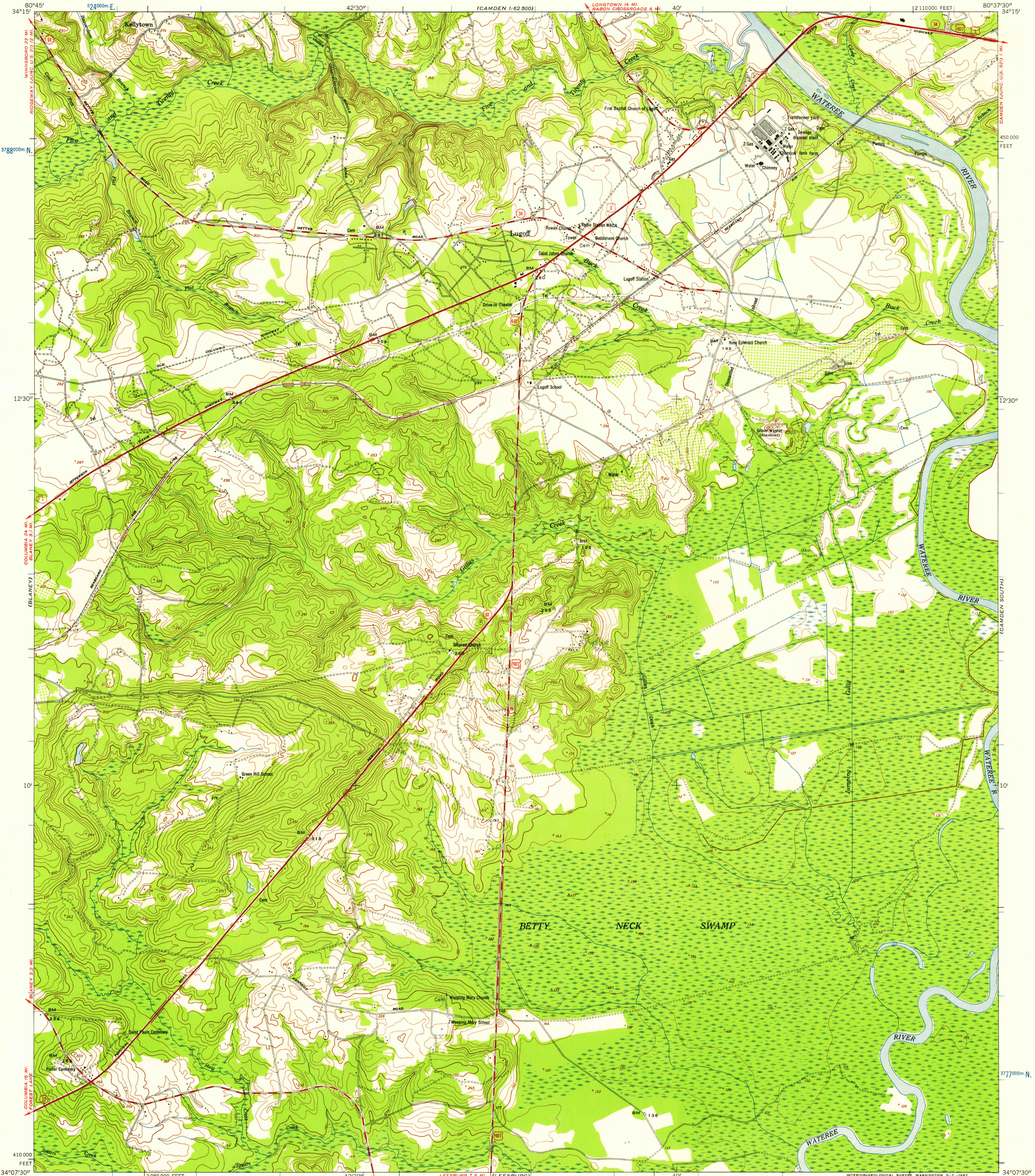
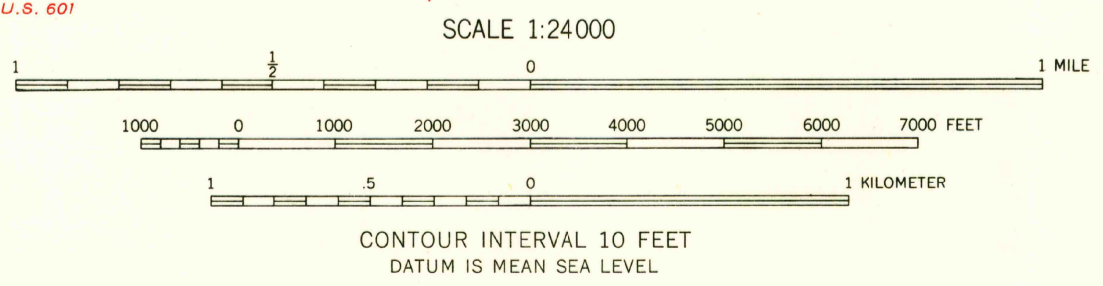


(CAMDEN)  
1:62,500



Mapped by the Army Map Service  
Published for civil use by the Geological Survey  
Control by USGS, USC&GS, USCE, and TVA  
Topography from aerial photographs by photogrammetric methods  
Aerial photographs taken 1952. Field check 1953  
Polyconic projection. 1927 North American datum  
10,000-foot grid based on South Carolina coordinate system,  
north zone  
1,000-meter Universal Transverse Mercator grid ticks  
zone 17, shown in blue  
Unchecked elevations are shown in brown

TRUE NORTH  
MAGNETIC NORTH  
APPROXIMATE MEAN  
DECLINATION, 1953



ROAD CLASSIFICATION

Heavy-duty	Light-duty
Medium-duty	Unimproved dirt
U.S. Route	State Route



LUGOFF, S. C.  
NW4 HAGOOD 15' QUADRANGLE  
N3407.5—W8037.5/7.5

THIS MAP COMPLIES WITH NATIONAL MAP ACCURACY STANDARDS  
FOR SALE BY U. S. GEOLOGICAL SURVEY, WASHINGTON 25, D. C.  
A FOLDER DESCRIBING TOPOGRAPHIC MAPS AND SYMBOLS IS AVAILABLE ON REQUEST

U.S.G.S.  
FILE COPY  
TOPOGRAPHIC

1953  
JUN 26 1951  
2595