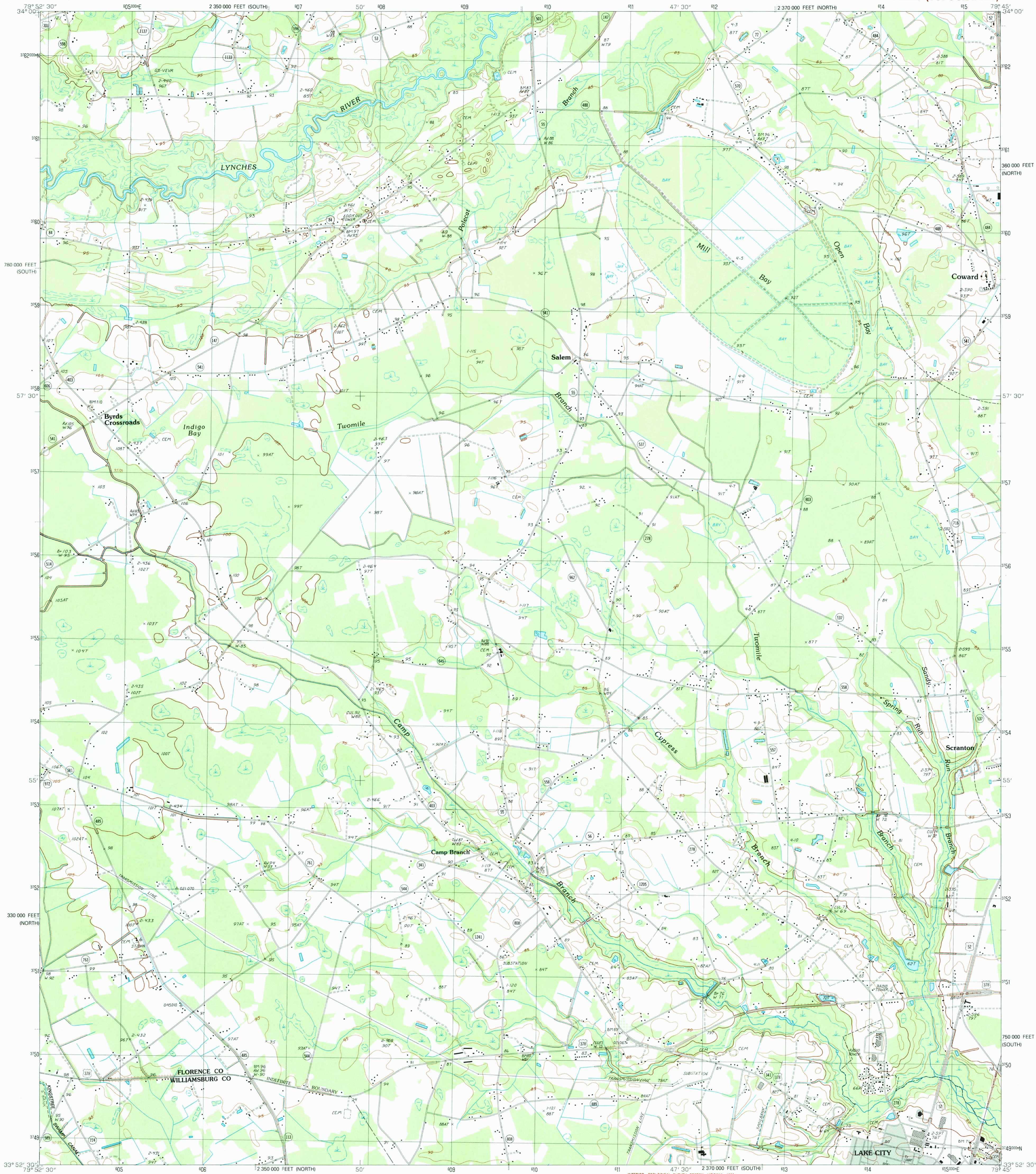


UNITED STATES
DEPARTMENT OF THE INTERIOR
GEOLOGICAL SURVEY

MILL BAY QUADRANGLE
SOUTH CAROLINA
7.5 MINUTE SERIES (TOPOGRAPHIC)



PRODUCED BY THE UNITED STATES GEOLOGICAL SURVEY
CONTROL BY.....USGS AND NOS/NOAA
COMPILED FROM AERIAL PHOTOGRAPHS TAKEN.....1980-81
FIELD CHECKED.....1982. MAP EDITED.....1990
PROJECTION.....LAMBERT CONFORMAL CONIC
GRID: 1000-METER UNIVERSAL TRANSVERSE MERCATOR.....ZONE 17
10,000-FOOT STATE GRID TICKS.....SOUTH CAROLINA NORTH
AND SOUTH ZONES
UTM GRID DECLINATION.....0°40' EAST
1990 MAGNETIC NORTH DECLINATION.....6°00' WEST
VERTICAL DATUM.....NATIONAL GEODETIC VERTICAL DATUM OF 1929
HORIZONTAL DATUM.....1927 NORTH AMERICAN DATUM
To place on the predicted North American Datum of 1983,
move the projection lines as shown by dashed corner ticks
(13 meters south and 20 meters west)
There may be private inholdings within the boundaries of any
Federal or State reservations shown on this map
No distinction made between houses, barns, and other buildings
Short dashed blue lines indicate elliptical bay outlines
visible on aerial photographs

PROVISIONAL MAP
Produced from original
manuscript drawings. Information
shown as of date of
photography.

SCALE 1:24 000
1 000 0 1000 2000 3000 4000 5000 6000 7000 8000 9000 10 000
KILOMETERS
METERS
MILES
FEET
CONTOUR INTERVAL 5 FEET
To convert meters to feet multiply by 3.2808
To convert feet to meters multiply by .3048
THIS MAP COMPLIES WITH NATIONAL MAP ACCURACY STANDARDS
FOR SALE BY U. S. GEOLOGICAL SURVEY, DENVER, COLORADO 80225, OR RESTON, VIRGINIA 22092

ROAD LEGEND
Improved Road
Unimproved Road
Trail
Interstate Route U. S. Route State Route
QUADRANGLE LOCATION
1 2 3 4 5 6 7 8
1 Sardis
2 Effingham
3 Evergreen
4 Olanta
5 Scranton
6 Hebron Crossroads
7 Lake City West
8 Lake City East
ADJOINING 7.5' QUADRANGLE NAMES
MILL BAY, SOUTH CAROLINA
PROVISIONAL EDITION 1990
33079-H7-TF-024

USGS MAP HISTORICAL MAP
JUN 28 1990
REC'D FILE COPY