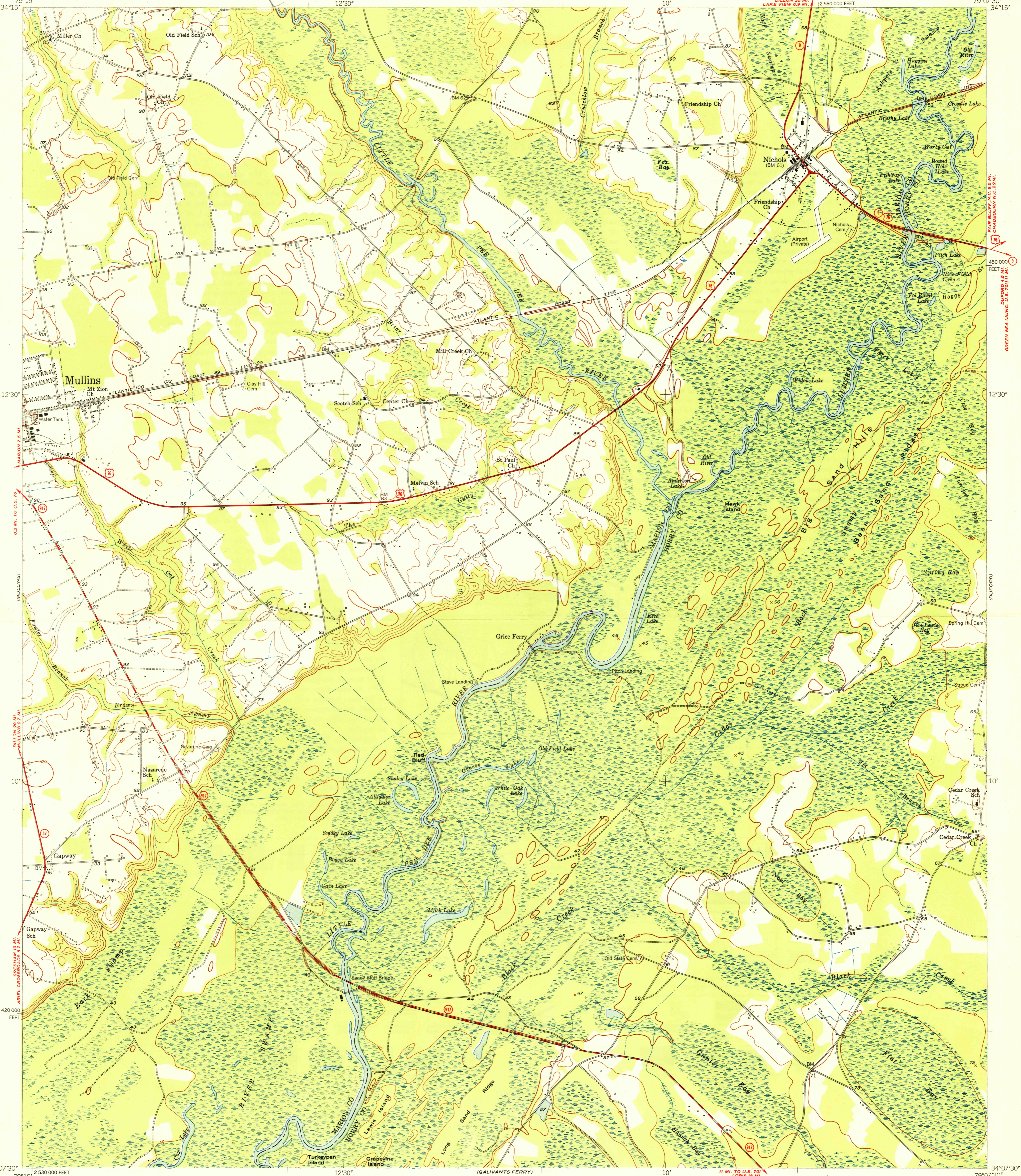
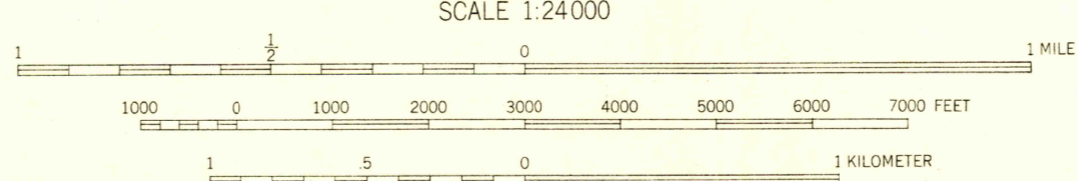


U.S.G.S.
FILE COPY
Imposition and Editing.



Mapped, edited, and published by the Geological Survey
Control by USGS, SCGS, and USC&GS
Culture and drainage in part compiled from
aerial photographs taken 1938 and 1939
Topography by plane-table methods 1948
Polyconic projection, 1927 North American datum
10,000-foot grid based on South Carolina coordinate system,
north zone

TRUE NORTH
MAGNETIC NORTH
APPROXIMATE MEAN
DECLINATION, 1948



CONTOUR INTERVAL 10 FEET
DATUM IS MEAN SEA LEVEL

THIS MAP COMPLIES WITH NATIONAL MAP ACCURACY STANDARDS
FOR SALE BY U. S. GEOLOGICAL SURVEY, WASHINGTON 25, D. C.

U.S.G.S.
FILE COPY
Imposition and Editing.

ROAD CLASSIFICATION
HARD-SURFACE ALL WEATHER ROADS DRY WEATHER ROADS
Heavy-duty **4 LANE 1/2 LANE** Improved dirt
Medium-duty **4 LANE 1/2 LANE** Unimproved dirt
Loose-surface, graded, or narrow hard-surface
U. S. Route State Route

NICHOLS, S. C.
N3407.5-W7907.5/7.5
EDITION OF 1950