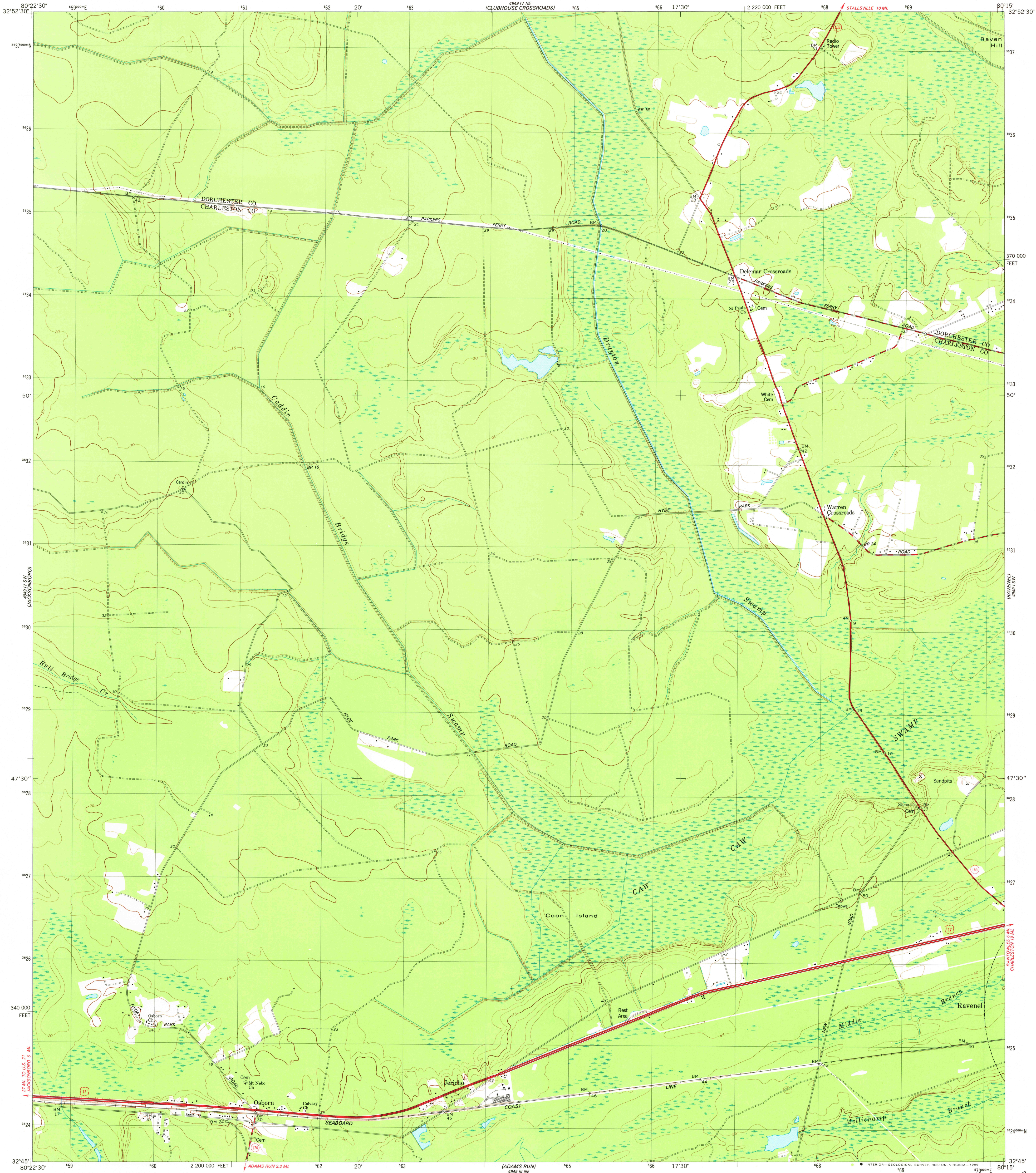
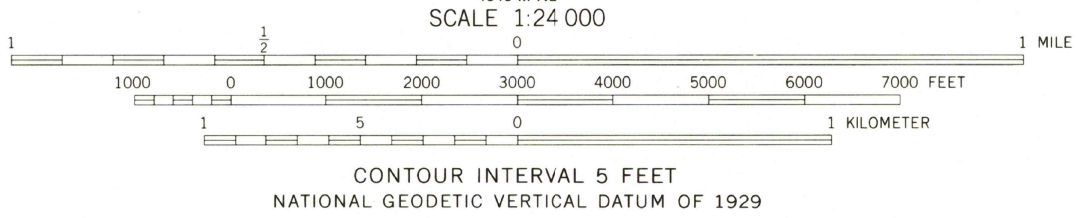
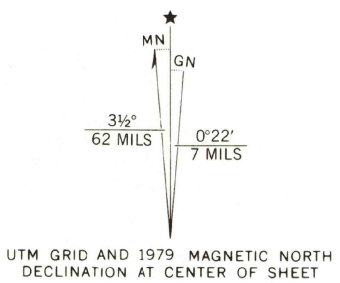


UNITED STATES  
DEPARTMENT OF THE INTERIOR  
GEOLOGICAL SURVEY

OSBORN QUADRANGLE  
SOUTH CAROLINA  
7.5 MINUTE SERIES (TOPOGRAPHIC)  
SE/4 COTTAGEVILLE 15' QUADRANGLE



Mapped, edited, and published by the Geological Survey  
Control by USGS and NOS/NOAA  
Topography by photogrammetric methods from aerial photographs  
taken 1972. Field checked 1973. Map edited 1979  
Projection and 10,000-foot grid ticks: South Carolina coordinate  
system, south zone (Lambert conformal conic)  
1000-meter Universal Transverse Mercator grid, zone 17  
1927 North American Datum  
To place on the predicted North American Datum 1983  
move the projection lines 15 meters south and  
18 meters west as shown by dashed corner ticks



ROAD CLASSIFICATION  
Primary highway, hard surface  
Secondary highway, hard surface  
Unimproved road  
Interstate Route  
U. S. Route  
State Route

USGS  
Historical File  
Topographic Division

OSBORN, S. C.  
SE/4 COTTAGEVILLE 15' QUADRANGLE  
N3245-W8015/7.5

1979

DMA 4949 IV SE-SERIES V846

THIS MAP COMPLIES WITH NATIONAL MAP ACCURACY STANDARDS  
FOR SALE BY U. S. GEOLOGICAL SURVEY, RESTON, VIRGINIA 22092  
A FOLDER DESCRIBING TOPOGRAPHIC MAPS AND SYMBOLS IS AVAILABLE ON REQUEST

MAY - 5 1980