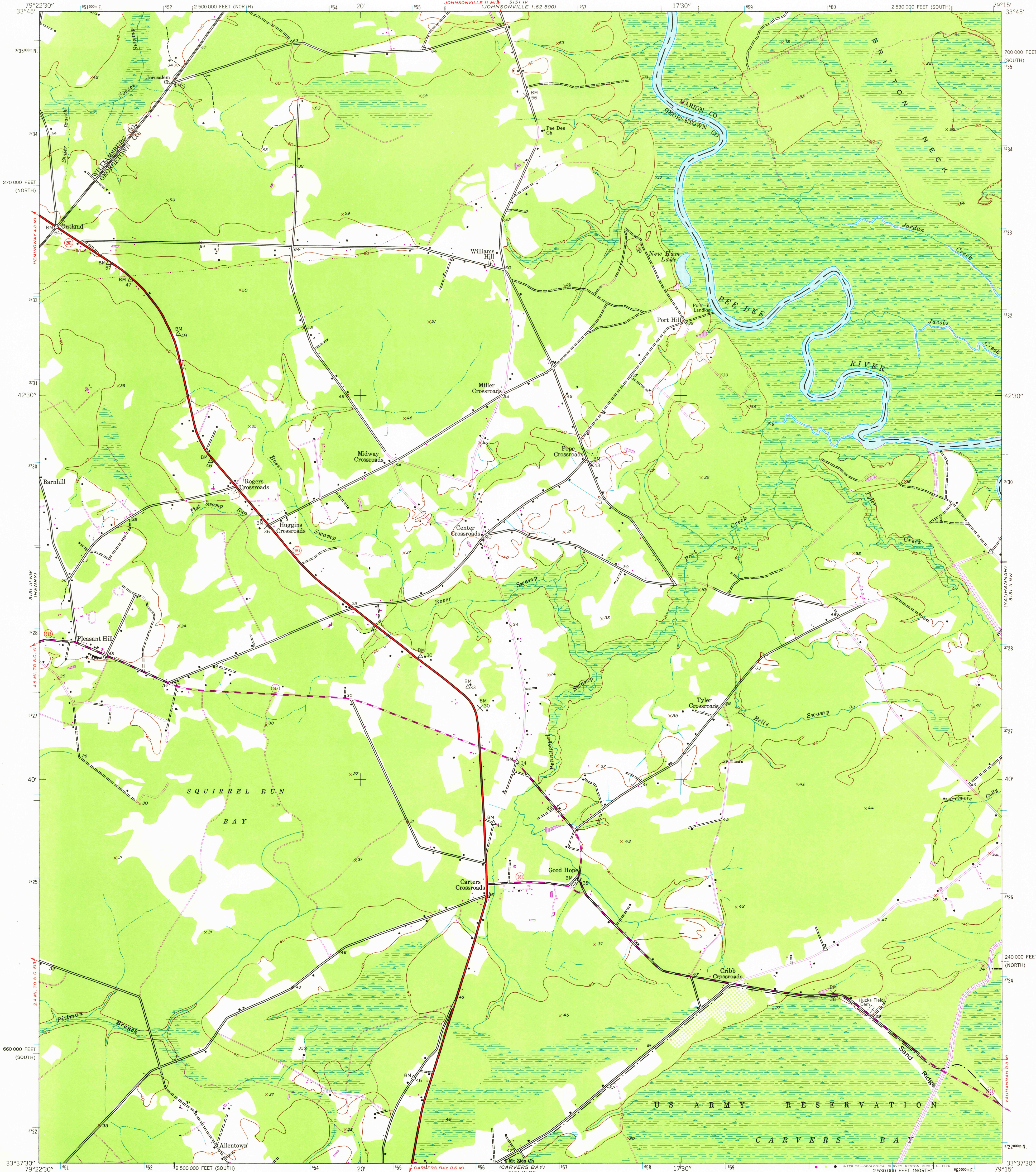
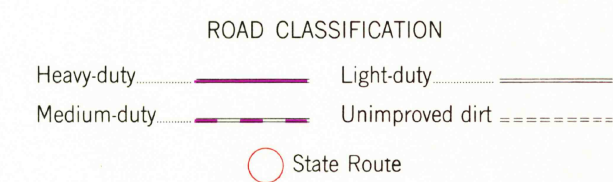
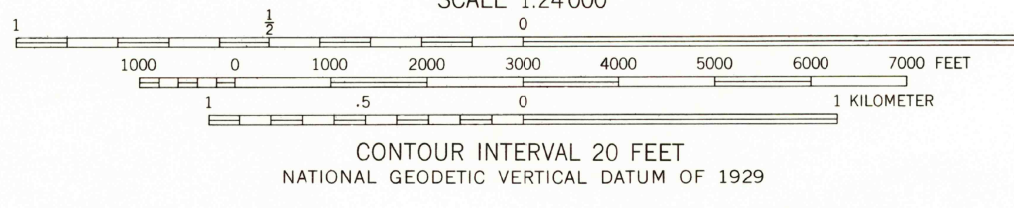
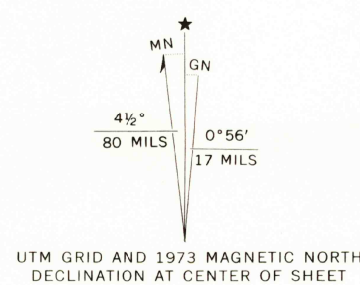


UNITED STATES
DEPARTMENT OF THE INTERIOR
GEOLOGICAL SURVEY

OUTLAND QUADRANGLE
SOUTH CAROLINA
7.5 MINUTE SERIES (TOPOGRAPHIC)



Mapped by the Army Map Service
Published for civil use by the Geological Survey
Control by USC&GS
Topography by photogrammetric methods from aerial photographs
taken 1942 and planetable surveys 1943
Polyconic projection. 1927 North American datum
10 000-foot grids based on South Carolina coordinate system,
north and south zones
1000-meter Universal Transverse Mercator grid ticks,
zone 17, shown in blue
Revisions shown in purple compiled by the Geological Survey from
aerial photographs taken 1973. This information not field checked



THIS MAP COMPLIES WITH NATIONAL MAP ACCURACY STANDARDS
FOR SALE BY U. S. GEOLOGICAL SURVEY, RESTON, VIRGINIA 22092
A FOLDER DESCRIBING TOPOGRAPHIC MAPS AND SYMBOLS IS AVAILABLE ON REQUEST

USGS
Historical File
Topographic Division

OUTLAND, S. C. AUG 2 7 1976
N3337.5-W7915/7.5
1943
PHOTOREVISED 1973
AMS 5151 III NE-SERIES V846