

80°30' W (LONGITUDE)

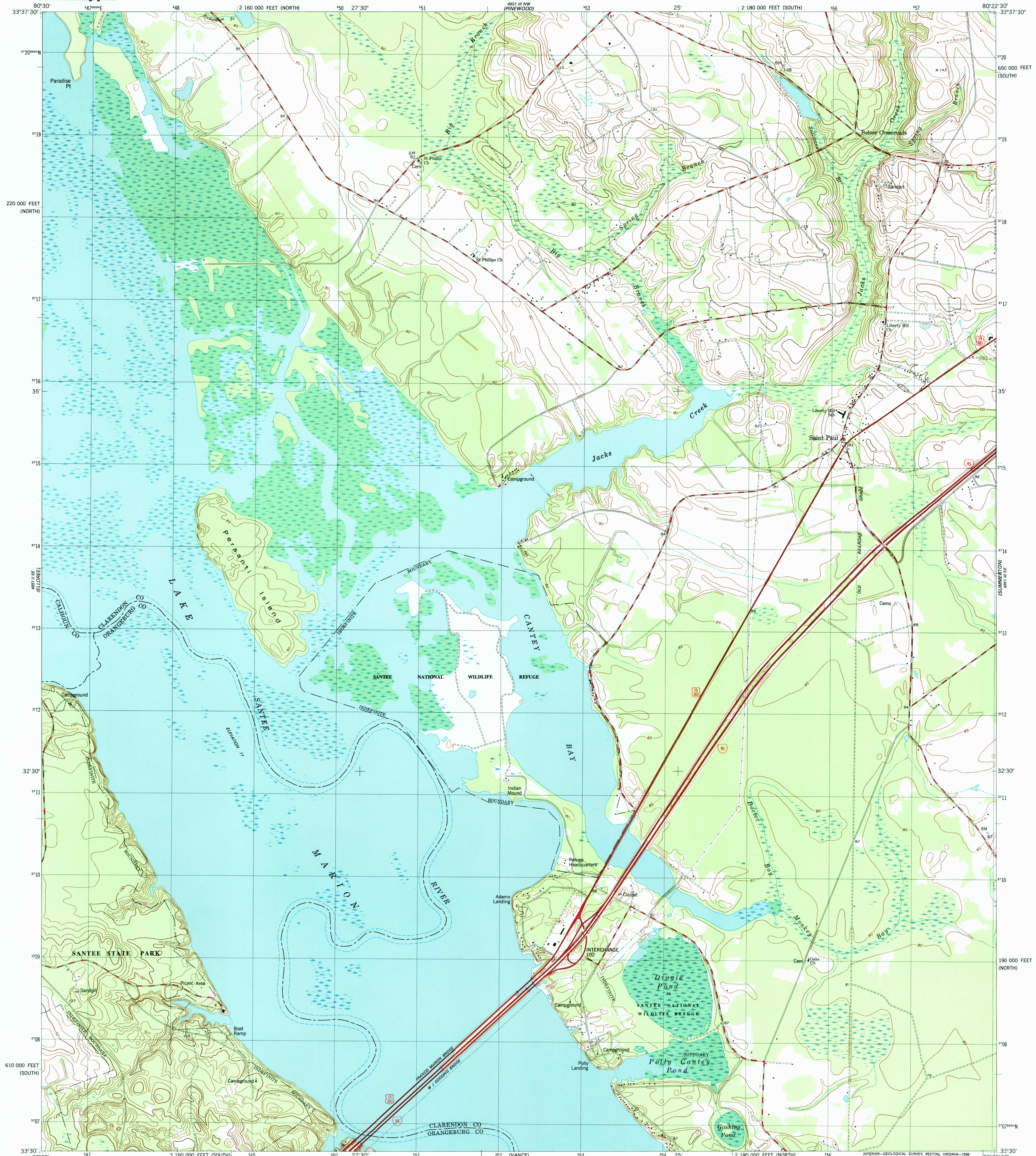


U.S. DEPARTMENT OF THE INTERIOR
U.S. GEOLOGICAL SURVEY



SAINT PAUL QUADRANGLE
SOUTH CAROLINA
7.5 MINUTE SERIES (TOPOGRAPHIC)

80°22'30" W (LONGITUDE)



33°37'30" N (LATITUDE)

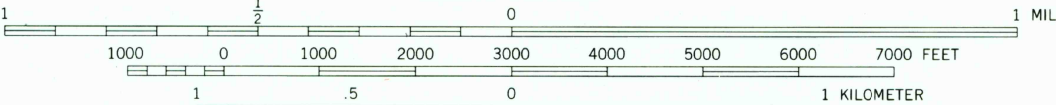
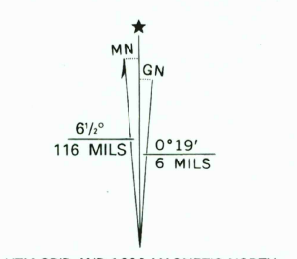
220 000 FEET (NORTH)

190 000 FEET (NORTH)

610 000 FEET (SOUTH)

33°30' N (LATITUDE)

Produced by the United States Geological Survey
 Derived from imagery taken 1972 and other sources. Photospected using imagery taken 1994; no major culture or drainage changes observed. Survey control current as of 1974. Boundaries verified 1999.
 North American Datum of 1927 (NAD 27)
 Projection: South Carolina coordinate system, south zone (Lambert conformal conic)
 10 000-foot ticks: South Carolina coordinate system, south and north zones
 1000-meter Universal Transverse Mercator grid, zone 17
 North American Datum of 1983 (NAD 83) is shown by dashed corner ticks. The values of the shift between NAD 27 and NAD 83 for 7.5-minute intersections are obtainable from National Geodetic Survey NADCON software.
 Short dashed blue lines indicate elliptical bay outlines visible on aerial photographs.
 There may be private inholdings within the boundaries of the National or State reservations shown on this map.



CONTOUR INTERVAL 5 FEET
 NATIONAL GEODETIC VERTICAL DATUM OF 1929
 TO CONVERT FROM FEET TO METERS, MULTIPLY BY 0.3048

THIS MAP COMPLIES WITH NATIONAL MAP ACCURACY STANDARDS
 FOR SALE BY U.S. GEOLOGICAL SURVEY, P.O. BOX 25286, DENVER, COLORADO 80225
 A FOLDER DESCRIBING TOPOGRAPHIC MAPS AND SYMBOLS IS AVAILABLE ON REQUEST



RECEIVED
 DEC 31 1999
 USGS NMD
 HISTORICAL MAP ARCHIVES

SAINT PAUL, S. C.
 1994

NIMA 4951 III SW-SERIES V846

