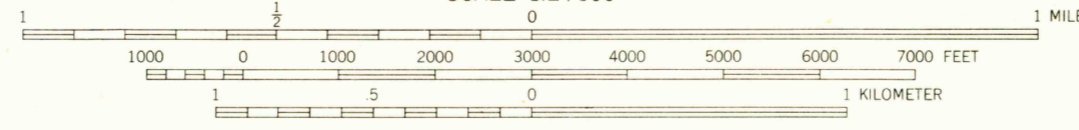
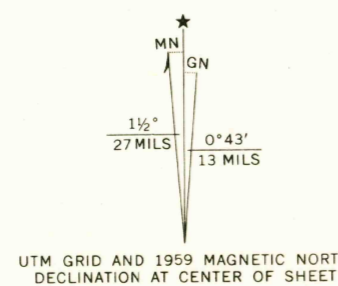


Mapped, edited, and published by the Geological Survey
Control by USGS, USC&GS, USCE, and South Carolina Geodetic Survey
Culture and drainage from controlled aerial photomosaic
Aerial photographs taken 1957. Topography by planetable
surveys 1959
Hydrography compiled from USC&GS charts 681, 837 (1958),
and 1238 (1957)
Polyconic projection. 1927 North American datum
10,000-foot grid based on South Carolina coordinate system,
south zone
1000-meter Universal Transverse Mercator grid ticks,
zone 17, shown in blue



DEPTH CURVES AND SOUNDINGS IN FEET—DATUM IS MEAN LOW WATER
SHORELINE SHOWN REPRESENTS THE APPROXIMATE LINE OF MEAN HIGH WATER
THE MEAN RANGE OF TIDE IS APPROXIMATELY 5 FEET

THIS MAP COMPLIES WITH NATIONAL MAP ACCURACY STANDARDS
FOR SALE BY U. S. GEOLOGICAL SURVEY, WASHINGTON, D. C. 20242
A FOLDER DESCRIBING TOPOGRAPHIC MAPS AND SYMBOLS IS AVAILABLE ON REQUEST

USGS HISTORICAL FILE TOPOGRAPHIC DIVISION

ROAD CLASSIFICATION	
Heavy-duty	Light-duty
Medium-duty	Unimproved dirt
U.S. Route	

U.S.G.S.
FIM 5 COPY
TOPOGRAPHIC DIVISION

SEWEE BAY, S. C.
N 3252.5—W 7937.5/7.5
1959
AMS 5049 1 NW—SERIES V846

2610
APR 4 1969