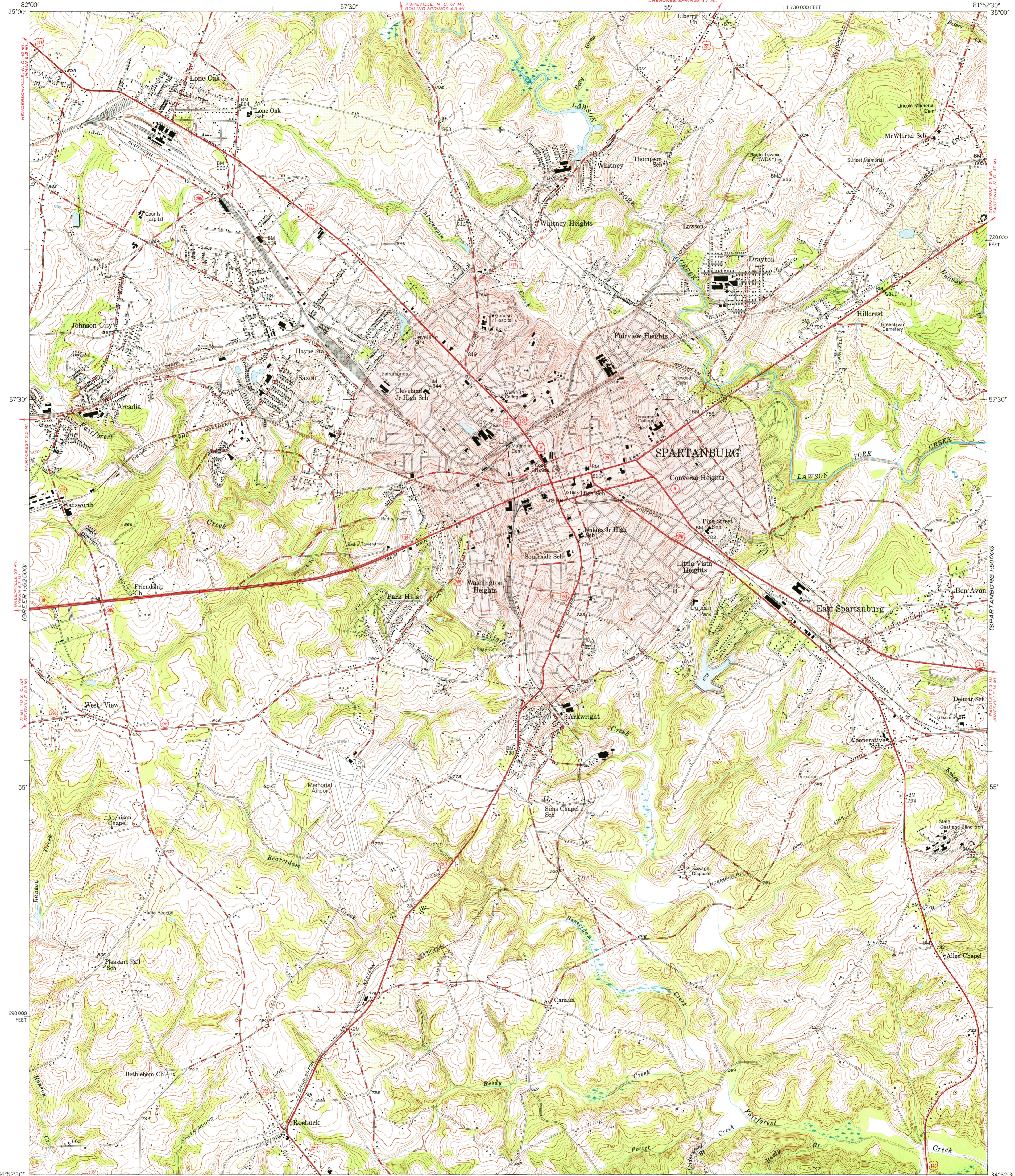


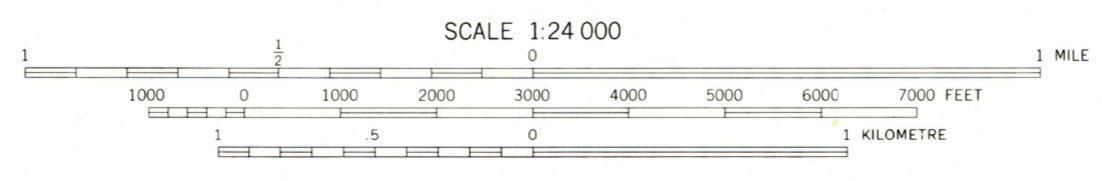
(SAUDA 1:25000)



(GREER 1:62500)

Mapped, edited, and published by the Geological Survey
Control by USGS, USC&GS, and CWA
Culture and drainage in part compiled from aerial photographs taken 1944
Topography by plane-table methods, 1947
Polyconic projection. 1927 North American datum
10,000-foot grid based on South Carolina coordinate system, north zone.
Red tint indicates area in which only landmark buildings are shown

TRUE NORTH
MAGNETIC NORTH
APPROXIMATE MEAN DECLINATION, 1947



CONTOUR INTERVAL 10 FEET
DATUM IS MEAN SEA LEVEL

ROAD CLASSIFICATION

HARD-SURFACE ALL WEATHER ROADS	DRY WEATHER ROADS
Heavy-duty 4 LANE 16 LANE	Improved dirt
Medium-duty 4 LANE 16 LANE	Unimproved dirt
Loose-surface, graded, or narrow hard-surface	
U. S. Route	State Route

THIS MAP COMPLIES WITH NATIONAL MAP ACCURACY STANDARDS
FOR SALE BY U. S. GEOLOGICAL SURVEY, WASHINGTON 25, D. C.

USGS HISTORICAL FILE TOPOGRAPHIC DIVISION

SPARTANBURG, S. C.
N3452.5-W8152.5/7.5
PRINTED 1949

DEC 11 1975