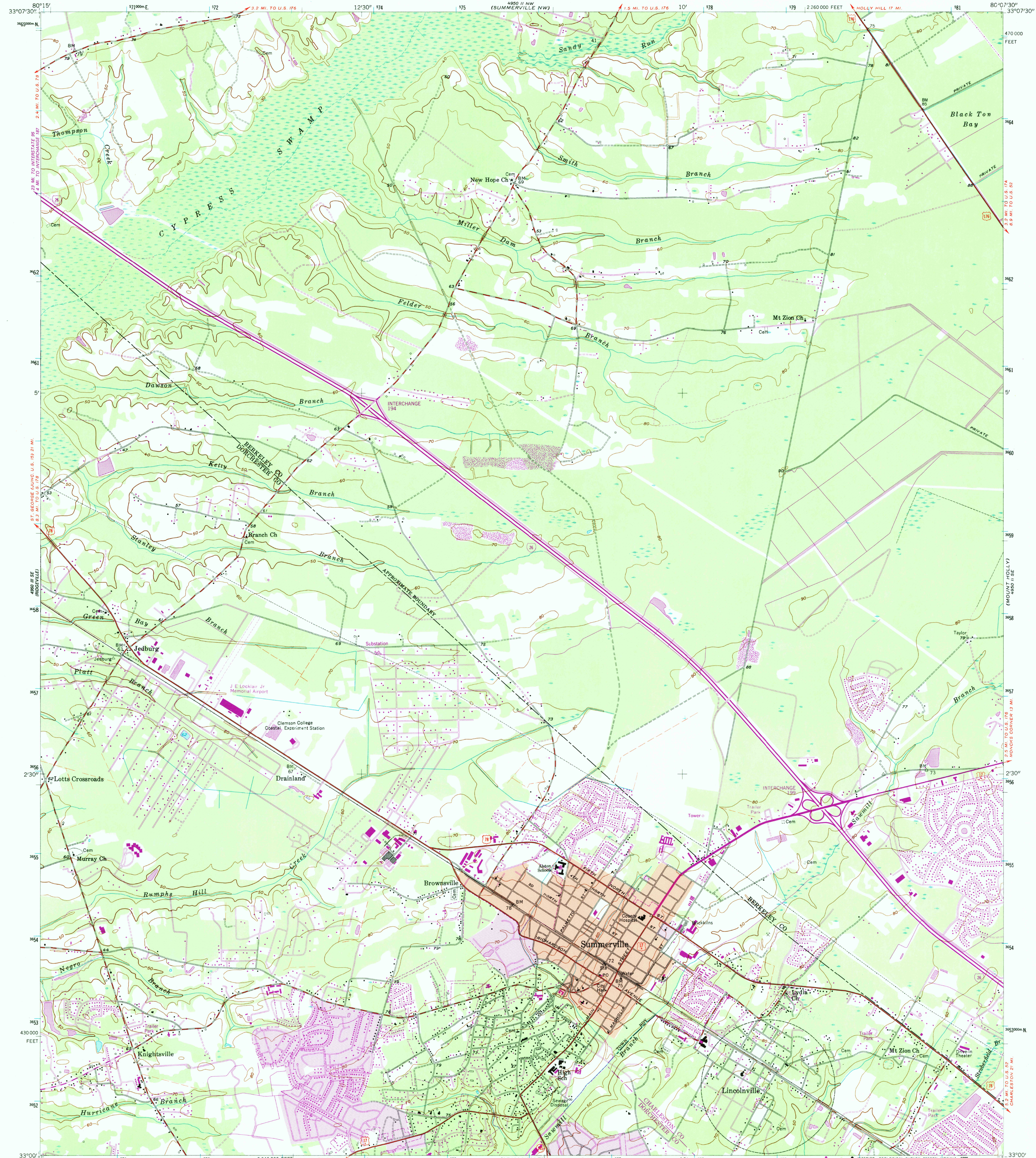
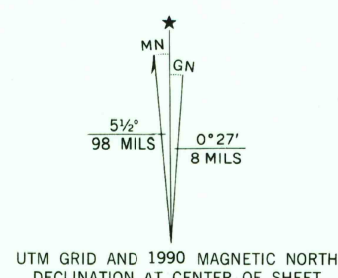


UNITED STATES
DEPARTMENT OF THE INTERIOR
GEOLOGICAL SURVEY

SUMMERVILLE QUADRANGLE
SOUTH CAROLINA
7.5 MINUTE SERIES (TOPOGRAPHIC)



Mapped, edited, and edited by the Geological Survey
Control by USGS, NOS/NOAA, and South Carolina Geodetic Survey
Culture and drainage in part compiled from aerial photographs
taken 1955. Topography by planetable surveys 1957-1958
Polyconic projection. 1927 North American Datum
10,000-foot grid ticks based on South Carolina coordinate system,
south zone
1000-meter Universal Transverse Mercator grid ticks,
zone 17, shown in blue
To place on the predicted North American Datum 1983
move the projection lines 15 meters south
and 18 meters west as shown by dashed corner ticks
Red tint indicates area in which only landmark buildings are shown
Fine red dashed lines indicate selected fence and field lines where
generally visible on aerial photographs. This information is unchecked



SCALE 1:24,000
CONTOUR INTERVAL 10 FEET
NATIONAL GEODETIC VERTICAL DATUM OF 1929
THIS MAP COMPLIES WITH NATIONAL MAP ACCURACY STANDARDS
FOR SALE BY U.S. GEOLOGICAL SURVEY
DENVER, COLORADO 80225 OR RESTON, VIRGINIA 22092
A FOLDER DESCRIBING TOPOGRAPHIC MAPS AND SYMBOLS IS AVAILABLE ON REQUEST

USGS MAP INTERPRETATION
JUN 22 1990
REC'D FILE COPY



ROAD CLASSIFICATION
Heavy-duty Light-duty
Medium-duty Unimproved dirt
U.S. Route State Route
Interstate Route

SUMMERVILLE, S. C.
33080-A2-TF-024
1958
PHOTOREVISED 1990
DMA 4950 II SW - SERIES V846