

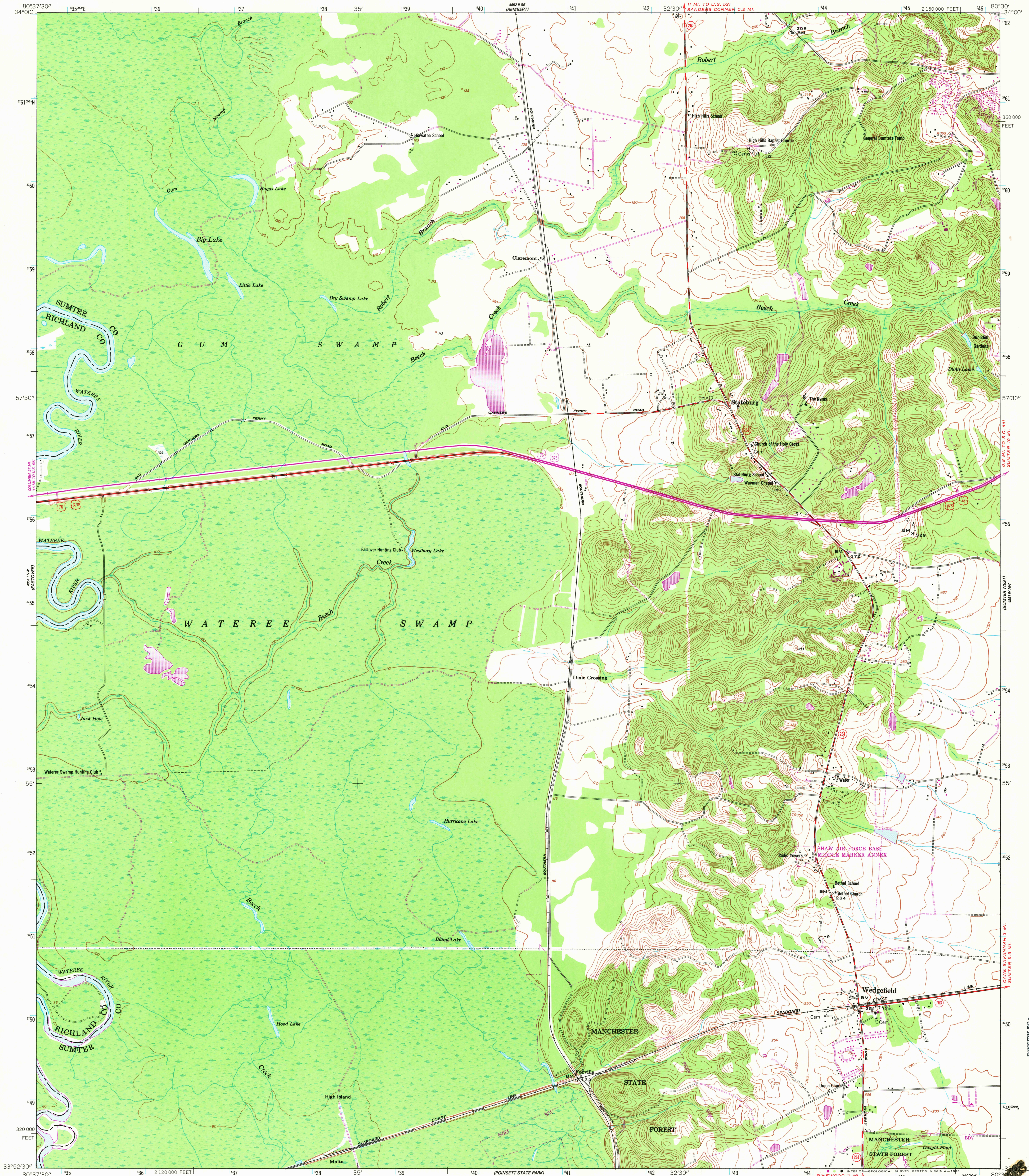
4851 NW
(LESTER)

UNITED STATES
DEPARTMENT OF THE INTERIOR
GEOLOGICAL SURVEY

UNITED STATES
DEPARTMENT OF THE ARMY
CORPS OF ENGINEERS

WEDGEFIELD QUADRANGLE
SOUTH CAROLINA
7.5 MINUTE SERIES (TOPOGRAPHIC)

4851 SE
(ASHWOOD 1:62,500)



Mapped by the Army Map Service
Published for civil use by the Geological Survey
Control by USGS, NOS/NOAA, USCE, and TVA
Topography by photogrammetric methods from aerial photographs
taken 1952. Field checked 1953
Polyconic projection. 10,000-foot grid ticks based on South Carolina
coordinate system, north zone. 1000-meter Universal Transverse
Mercator grid ticks, zone 17, shown in blue. 1927 North
American Datum. To place on the predicted North American
Datum 1983 move the projection lines 13 meters south and
18 meters west as shown by dashed corner ticks
There may be private inholdings within the boundaries
of the National or State reservations shown on this map

Revisions shown in purple and woodland compiled by the
Geological Survey from aerial photographs taken 1980 and other
sources. This information not field checked. Map edited 1982

THIS MAP COMPLIES WITH NATIONAL MAP ACCURACY STANDARDS
FOR SALE BY U. S. GEOLOGICAL SURVEY, RESTON, VIRGINIA 22092
A FOLDER DESCRIBING TOPOGRAPHIC MAPS AND SYMBOLS IS AVAILABLE ON REQUEST



ROAD CLASSIFICATION
Heavy-duty ——— Light-duty ———
Medium-duty ——— Unimproved dirt ———
U. S. Route ——— State Route ———

WEDGEFIELD, S. C.
N 3352.5—W 8030/7.5
1953
PHOTOREVISED 1982
DMA 4851 1 NE—SERIES V846

RETURN TO :
USGS AND HISTORICAL MAP ARCHIVES

MAY 24 1983
PRIVATE