

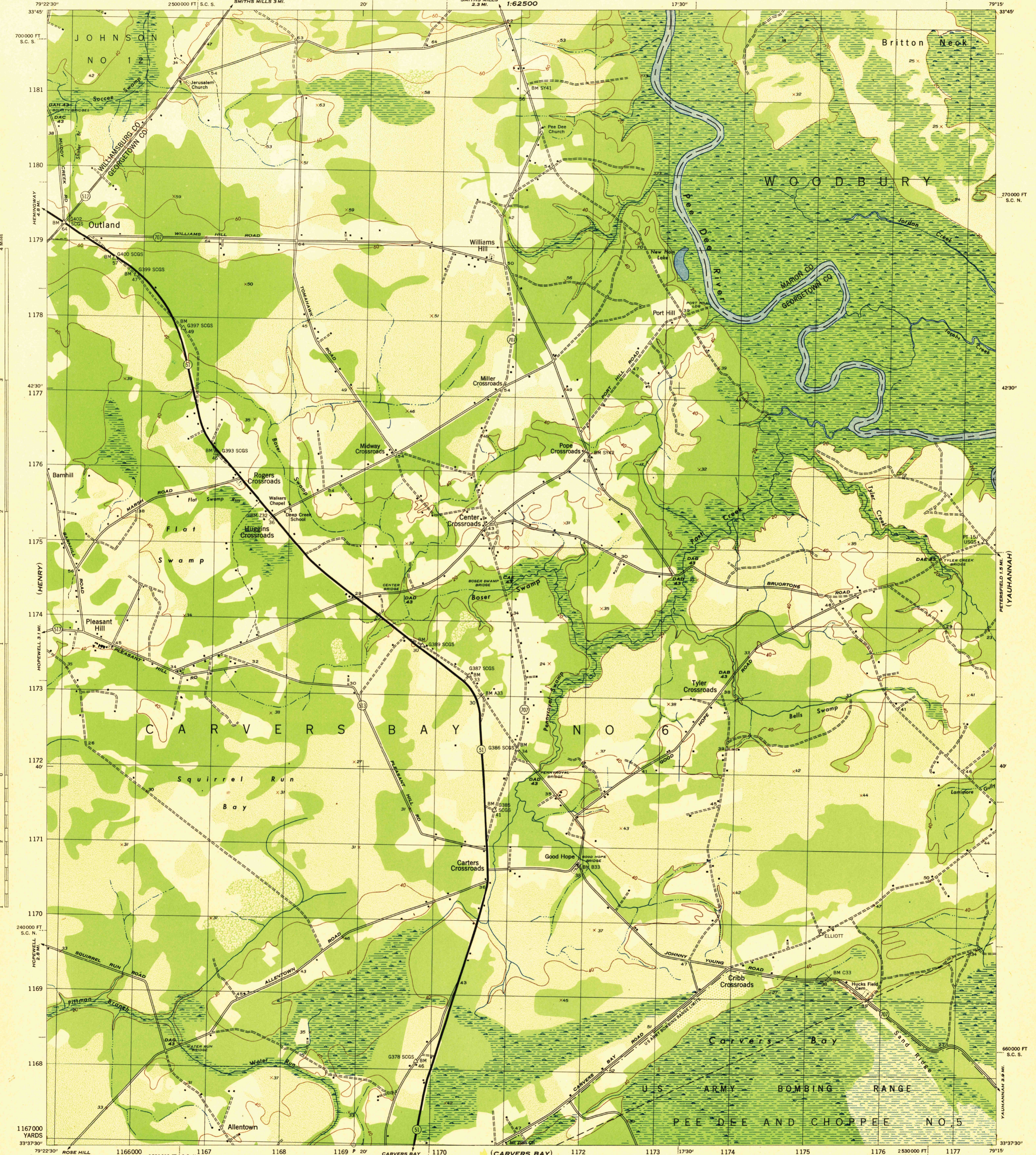
JOHNSONVILLE
1:62500

SOUTH CAROLINA
SCALE 1:31680

WAR DEPARTMENT
CORPS OF ENGINEERS, U. S. ARMY
(JOHNSONVILLE)
1:62500

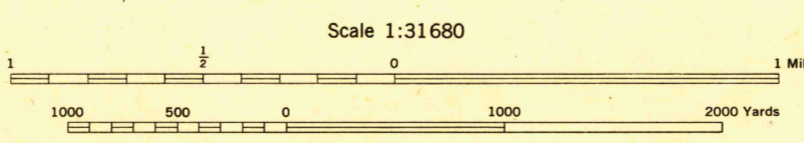
OUTLAND QUADRANGLE
7½-MINUTE SERIES
2530000 FT. S.C. N.

(DONGOLA)



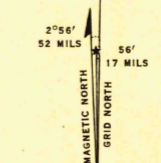
Mapmed by the U. S. Coast and Geodetic Survey under the direction of the Chief of Engineers, U. S. Army, 1943. Control by the U. S. Coast and Geodetic Survey. Planimetry by U. S. C. & G. S. from 1942 air photographs. Planetable topography and field edit by U. S. C. & G. S., 1943. Polyconic projection, North American datum of 1927. Recoverable horizontal control stations of less than third order accuracy are shown by circles.

ROAD CLASSIFICATION 1943
Dependable hard-surface, heavy-duty road. Loose-surface graded, dry-weather road. U. S. route 74.
Secondary, hard-surface, all-weather road. Dirt road. State route 26.
More than two lanes indicated by note along road with tick at point of change 3 LANE 4 LANE
THIS MAP COMPLIES WITH THE NATIONAL STANDARD MAP ACCURACY REQUIREMENTS



Scale 1:31680
CONTOUR INTERVAL 20 FEET
DATUM IS MEAN SEA LEVEL

ONE THOUSAND YARD GRID COMPUTED FROM GRID SYSTEM FOR PROGRESSIVE MAPS IN THE U. S. ZONE B. U. S. C. & G. S. SPECIAL PUBLICATION NO. 59
THE LAST THREE DIGITS OF THE GRID NUMBERS ARE OMITTED
THE STATE GRIDS ARE INDICATED AT 10,000 FOOT INTERVALS
NOTE: OFFICERS USING THIS MAP WILL MAKE PERSON CORRECTIONS AND ADDITIONS WHICH COME TO THEIR ATTENTION AND SHALL DIRECT TO THE CHIEF OF ENGINEERS, WASHINGTON, D. C.



APPROXIMATE MEAN DECLINATION 1943
ANNUAL MAGNETIC CHANGE 1' DECREASE

WOODLAND CLASSIFICATION
Dense woodland
Scattered brush and trees
Marsh or swamp
Dense brush
Orchard
Low ground, intermittently flooded

OUTLAND, S. C.
N3337.5-W7915/7.5
EDITION OF 1944

(PLANTERSVILLE)