

DEPARTMENT OF THE INTERIOR
U. S. GEOLOGICAL SURVEY

Advance sheet.
Subject to correction.

SOUTH CAROLINA
BERKELEY COUNTY
CORDESVILLE QUADRANGLE

79° 45' 33" 15'



(Summerville)

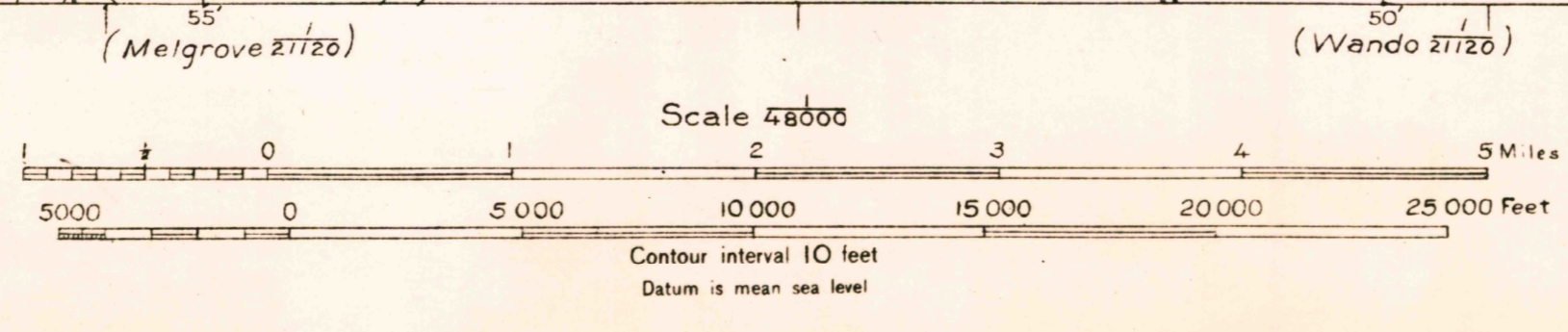
E. F. NELSON CUT
... must not be taken
... under 10'

US Miles

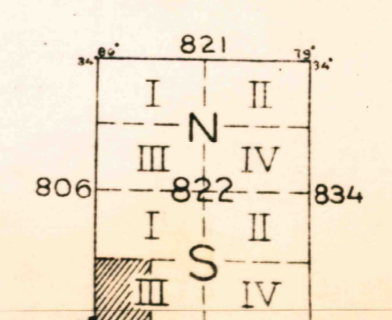
1095000 YARDS

1105000 YARDS

Topography by C.W. Goodlove, H.D. Clement, E.V. Holloway,
Edgar Allen, S.E. Clement, and C.R. de Medicis.
Surveyed in 1919.



Polyconic projection, North American datum
5000 yard grid based upon U. S. zone system, B.



CORDESVILLE, S.C.

APPROXIMATE MEAN DECLINATION 1919

(Sewer Bay)