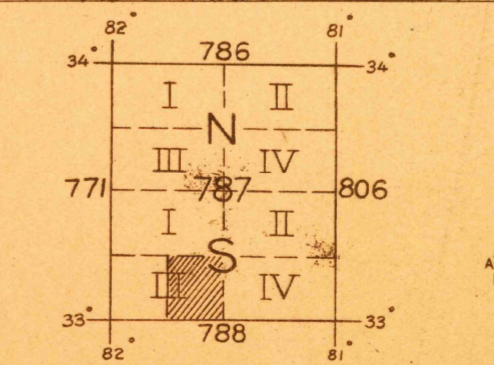
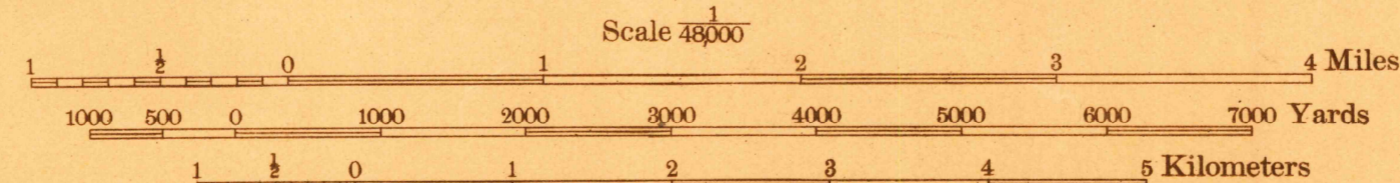


(Augusta)



R. B. Marshall, Chief Geographer.  
W. H. Herron, Geographer in charge.  
Topography by C. W. Goodlove, F. W. Farnsworth,  
H. R. Kilmer, J. E. King and Edgar Allen.  
Control by U. S. Coast and Geodetic Survey; Corps of  
Engineers, U. S. Army; E. L. McNair, C. H. Semper, and  
L. F. Biggs.  
Surveyed in 1918-1919.

Farnsworth
King
Goodlove
Kilmer
Allen



Edition of 1920.  
ELLENTON

**FILE COPY**  
RETURN TO CENTRAL FILE

Ellenton, S.C. - Ga.