

DEPARTMENT OF THE INTERIOR  
FRANKLIN K. LANE, SECRETARY  
U. S. GEOLOGICAL SURVEY  
GEORGE OTIS SMITH, DIRECTOR

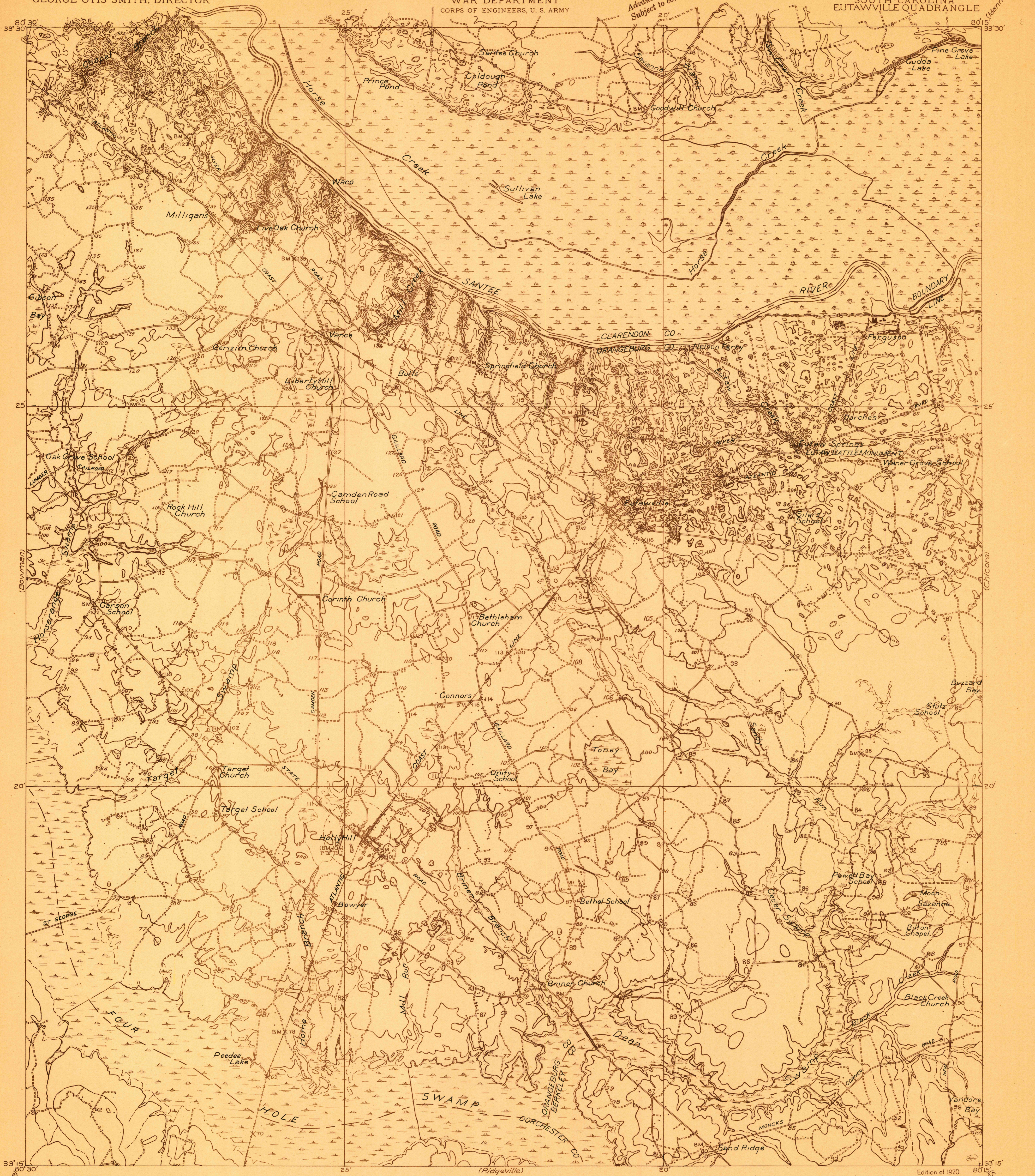
806-S-11-W/2  
**TOPOGRAPHY**  
WAR DEPARTMENT  
CORPS OF ENGINEERS, U. S. ARMY

**TOPOGRAPHIC FILES**

RETAINED COPY  
This sheet is retained as a record  
from the Chief Geographer.

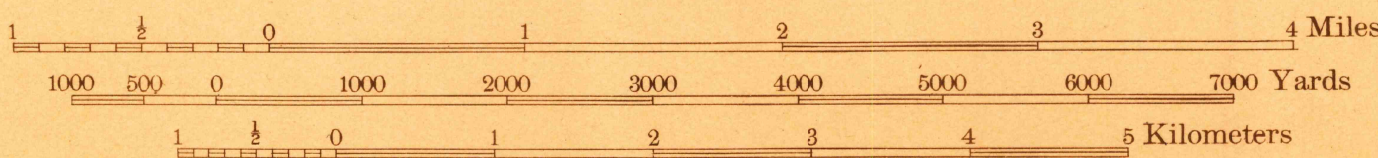
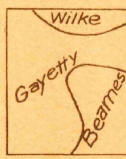
SOUTH CAROLINA  
EUTAWVILLE QUADRANGLE

Advance sheet.  
Subject to correction.

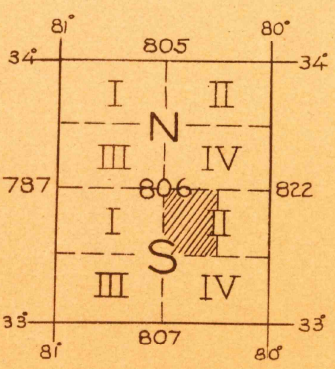


C. H. Birdseye, Chief Topographic Engineer.  
Frank Sutton, Geographer in charge.  
Topography by J. I. Gayetty, J. H. Wilke, and  
W. S. Beames  
Control by Oscar Jones, H. P. Kilby, and R. G. Clinite.  
Surveyed in 1919-1920

SURVEYED IN COOPERATION WITH THE WAR DEPARTMENT.



Contour interval 10 feet  
Datum is mean sea level.



TRUE NORTH  
MAGNETIC NORTH  
APPROXIMATE MEAN  
DECLINATION 1920

EUTAWVILLE

**FILE COPY**

RETURN TO CENTRAL FILE