

RETAINED COPY  
This sheet must not be taken from the files without authority from the Chief Geographer.

DEPARTMENT OF THE INTERIOR  
FRANKLIN K. LANE, SECRETARY  
U. S. GEOLOGICAL SURVEY  
GEORGE OTIS SMITH, DIRECTOR

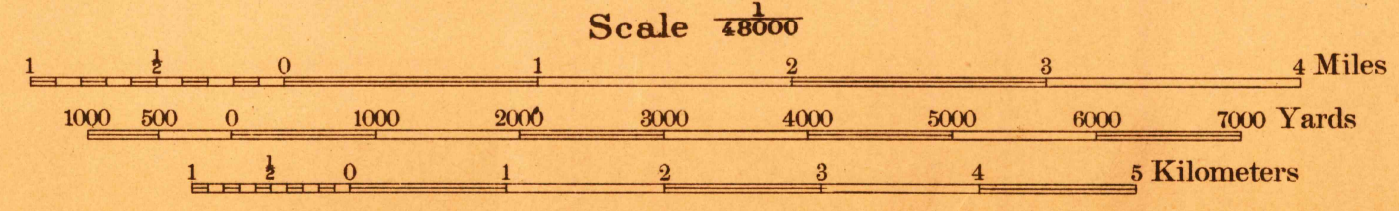
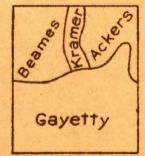
806-S-IV-E/2  
TOPOGRAPHY  
WAR DEPARTMENT  
CORPS OF ENGINEERS, U. S. ARMY

Advance sheet.  
Subject to correction.

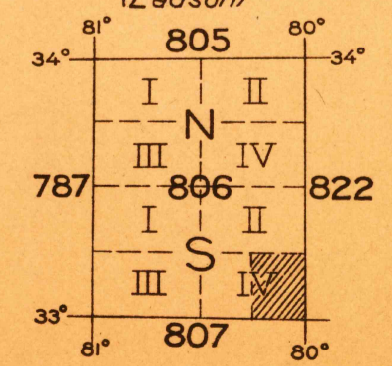
SOUTH CAROLINA  
SUMMERVILLE QUADRANGLE



R. B. Marshall, Chief Geographer.  
W. H. Herron, Geographer in charge.  
Topography by J. I. Gayetty, A. L. Ackers,  
W. S. Beames, and F. D. Kramer.  
Control by E. L. McNair, C. H. Semper,  
R. G. Clinite, and H. L. Hudson.



Contour interval 10 feet.  
Datum is mean sea level.



Edition of 1919  
**HISTORICAL FILES**  
(DO NOT REMOVE)  
SUMMERVILLE  
APPROXIMATE MEAN DECLINATION, 1919

(Corryville)

(Ravenels)

(Ladson)

(Corryville)