

(McCormick)
1930

DEPARTMENT OF THE INTERIOR
U. S. GEOLOGICAL SURVEY

787-N-111-W/2
WAR DEPARTMENT
CORPS OF ENGINEERS, U. S. ARMY

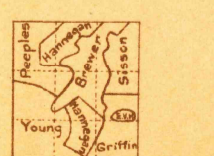
Advance sheet.
Subject to correction

SOUTH CAROLINA-GEORGIA
WARRENVILLE QUADRANGLE

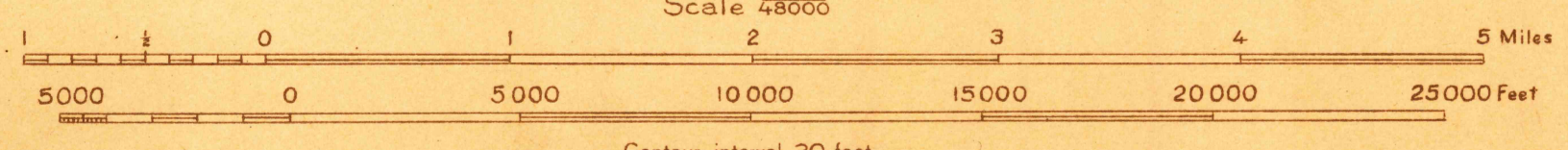


Topography by W. H. Griffin, Duncan Hannegan, Gilbert Young,
G. E. Sisson, E. V. Hollaway, W. B. Brewer, E. M. Peoples, and P. W. McMillen.
Surveyed in 1918, 1919 and 1923.

(Hephzibah)

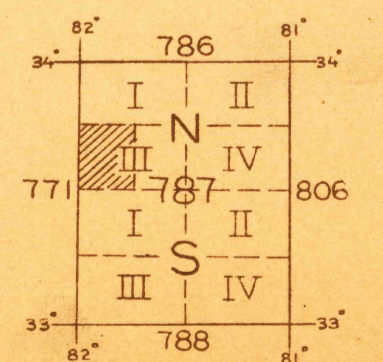


APPROXIMATE MEAN
DECLINATION 1923



Scale 48000

Contour interval 20 feet
Datum is mean sea level



Polyconic projection, North American datum.
5000 yard grid based upon U. S. zone system, B.

FILE COPY
RETURN TO CENTRAL FILE

WARRENVILLE, S.C.-GA.