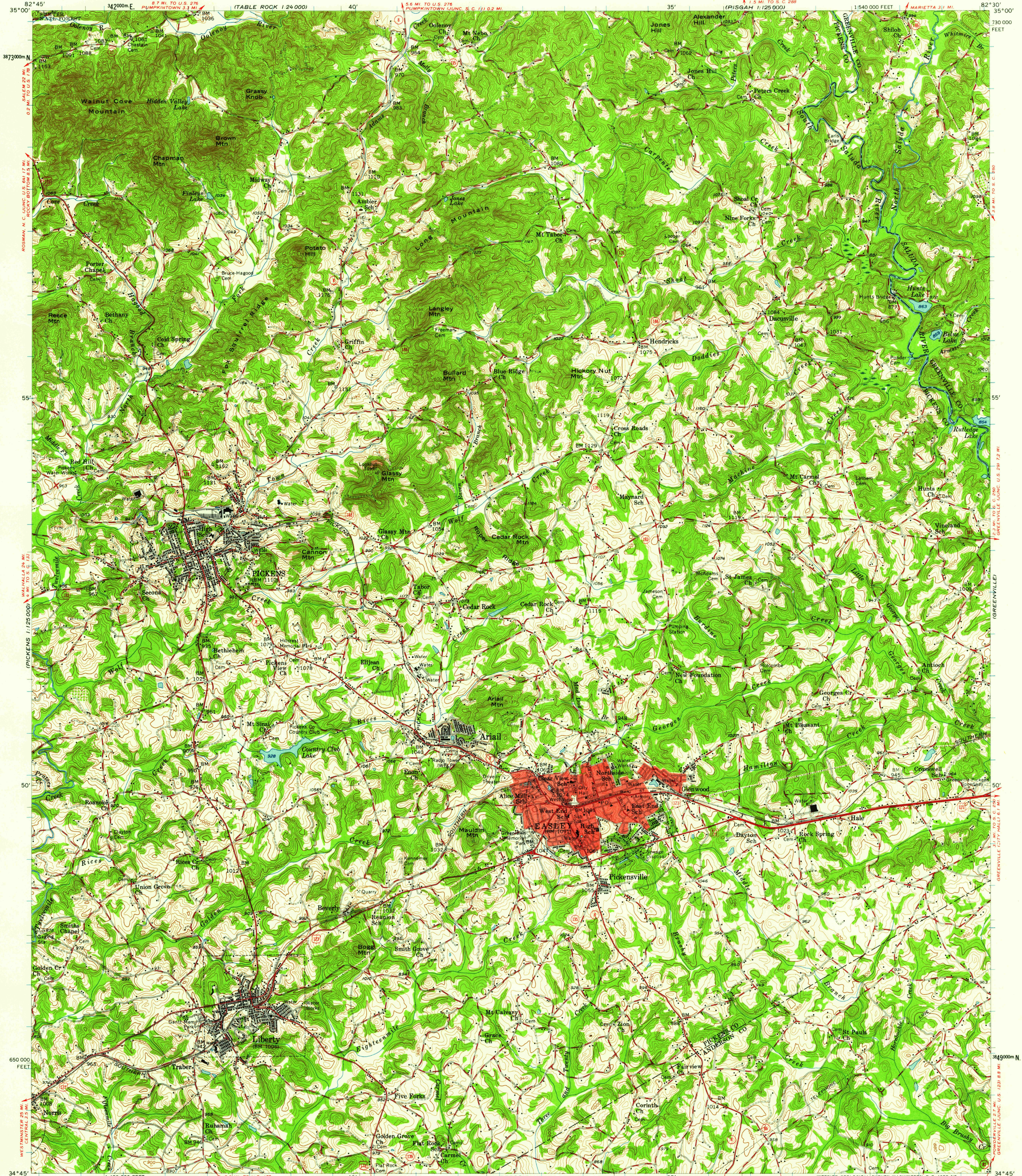


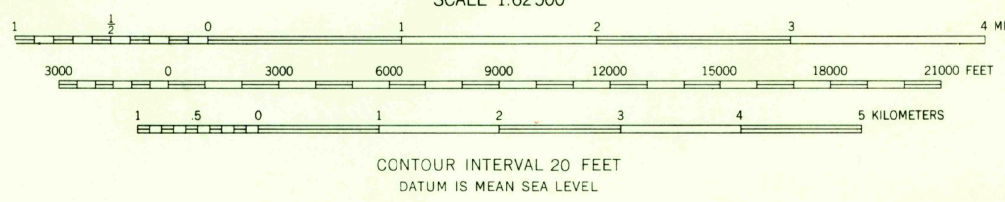
UNITED STATES  
DEPARTMENT OF THE INTERIOR  
GEOLOGICAL SURVEY

EASLEY QUADRANGLE  
SOUTH CAROLINA  
15 MINUTE SERIES (TOPOGRAPHIC)



Mapped, edited, and published by the Geological Survey  
Control by USGS, USC&GS, and South Carolina Geodetic Survey  
Topography from aerial photographs by Kelsch plotter  
Aerial photographs taken 1955. Field check 1957  
Polyconic projection. 1927 North American datum  
10,000-foot grid based on South Carolina coordinate system,  
north zone  
1000-meter Universal Transverse Mercator grid ticks,  
zone 17, shown in blue  
Red tint indicates area in which only  
landmark buildings are shown  
Unchecked elevations are shown in brown

TRUE NORTH  
MAGNETIC NORTH  
APPROXIMATE MEAN  
DECLINATION, 1957



ROAD CLASSIFICATION  
Heavy-duty — Light-duty  
Medium-duty — Unimproved dirt  
U.S. Route — State Route

U.S.G.S. FILE COPY TOPOGRAPHIC DIVISION  
EASLEY, S. C. N3445-W8230/15  
1957

THIS MAP COMPLIES WITH NATIONAL MAP ACCURACY STANDARDS  
FOR SALE BY U. S. GEOLOGICAL SURVEY, WASHINGTON 25, D. C.  
A FOLDER DESCRIBING TOPOGRAPHIC MAPS AND SYMBOLS IS AVAILABLE ON REQUEST

JAN - 8 1959  
3390