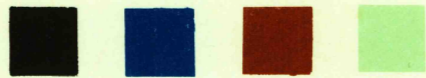


(AUGUSTA)

SOUTH CAROLINA-GEORGIA 1:62,500



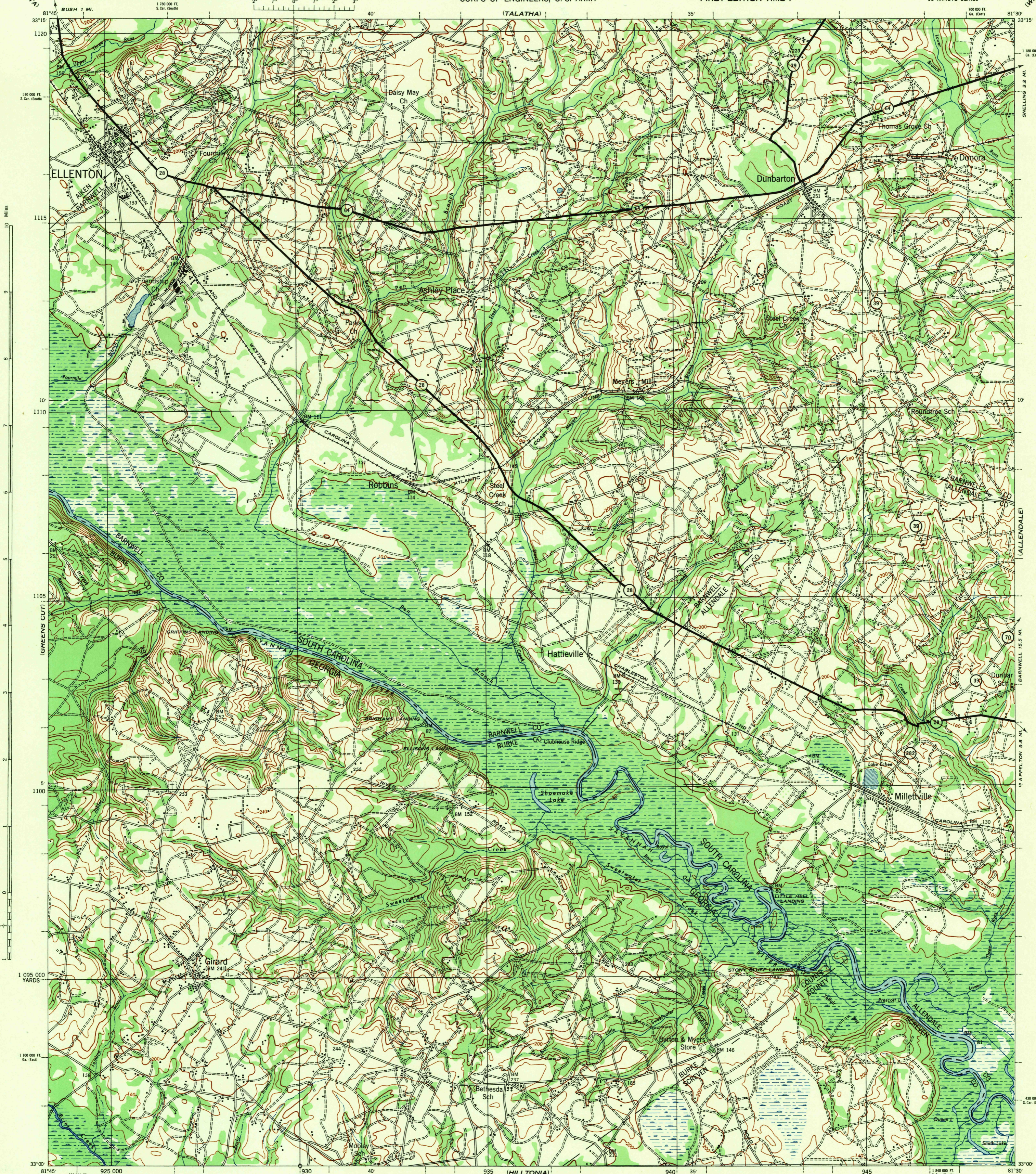
WAR DEPARTMENT
CORPS OF ENGINEERS, U. S. ARMY

FIRST EDITION-AMS 1

ELLENTON QUADRANGLE

15 MINUTE SERIES

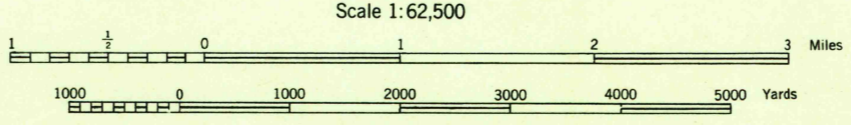
(WILLISTON)



First edition 1944.
 Prepared under the direction of the Chief of Engineers, U. S. Army, by the Army Map Service, East St. Louis unit, 1942.
 Based on U. S. G. S. quadrangle, Elleston, 1:62,500 (1921).
 Horizontal control by U. S. C. & G. S. and U. S. G. S.
 Vertical control by U. S. G. S.
 Surveyed in cooperation with the War Department, 1918-1919.
 Revised from single lens vertical aerial photographs.
 Aerial photography - A. A. Department of Agriculture, 1937-38-41.
 Polyconic Projection, North American Datum 1927.

H-15 ROAD CLASSIFICATION 1942

Dependable hard-surface, heavy-duty road	Loose-surface graded, dry weather road	U. S. Route
Secondary, hard-surface, all-weather road	Gravel road	State Route
More than two lanes indicated by note along road with tick at point of change	3 LANE 1/4 LANE	



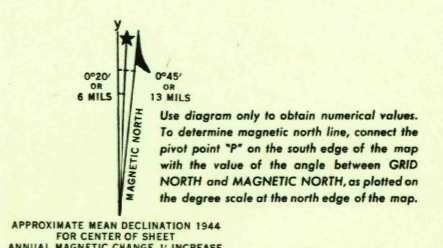
CONTOUR INTERVAL 20 FEET
 DATUM IS MEAN SEA LEVEL

FIVE THOUSAND YARD GRID COMPUTED FROM GRID SYSTEM FOR PROGRESSIVE MAPS IN THE U. S. ZONE B, U. S. C. & G. S. SPECIAL PUBLICATION NO. 59

THE LAST THREE DIGITS OF THE GRID NUMBERS ARE OMITTED

THE STATE GRIDS ARE INDICATED FOR SOUTH CAROLINA, ZONE SOUTH BY ... TICKS, FOR GEORGIA, ZONE EAST BY ... TICKS, OUTSIDE THE NEAT LINE AT 1000 FOOT INTERVALS.

NOTE: OFFICERS USING THIS MAP WILL MARK HORIZON CORRECTIONS AND ADDITIONS WHICH COME TO THEIR ATTENTION AND WILL DIRECT TO THE CHIEF OF ENGINEERS, WASHINGTON, D. C.



4/44 SX

ELLENTON, S. C. - GA.
N3300-W8130/15

USGS
Historical File
Topographic Division