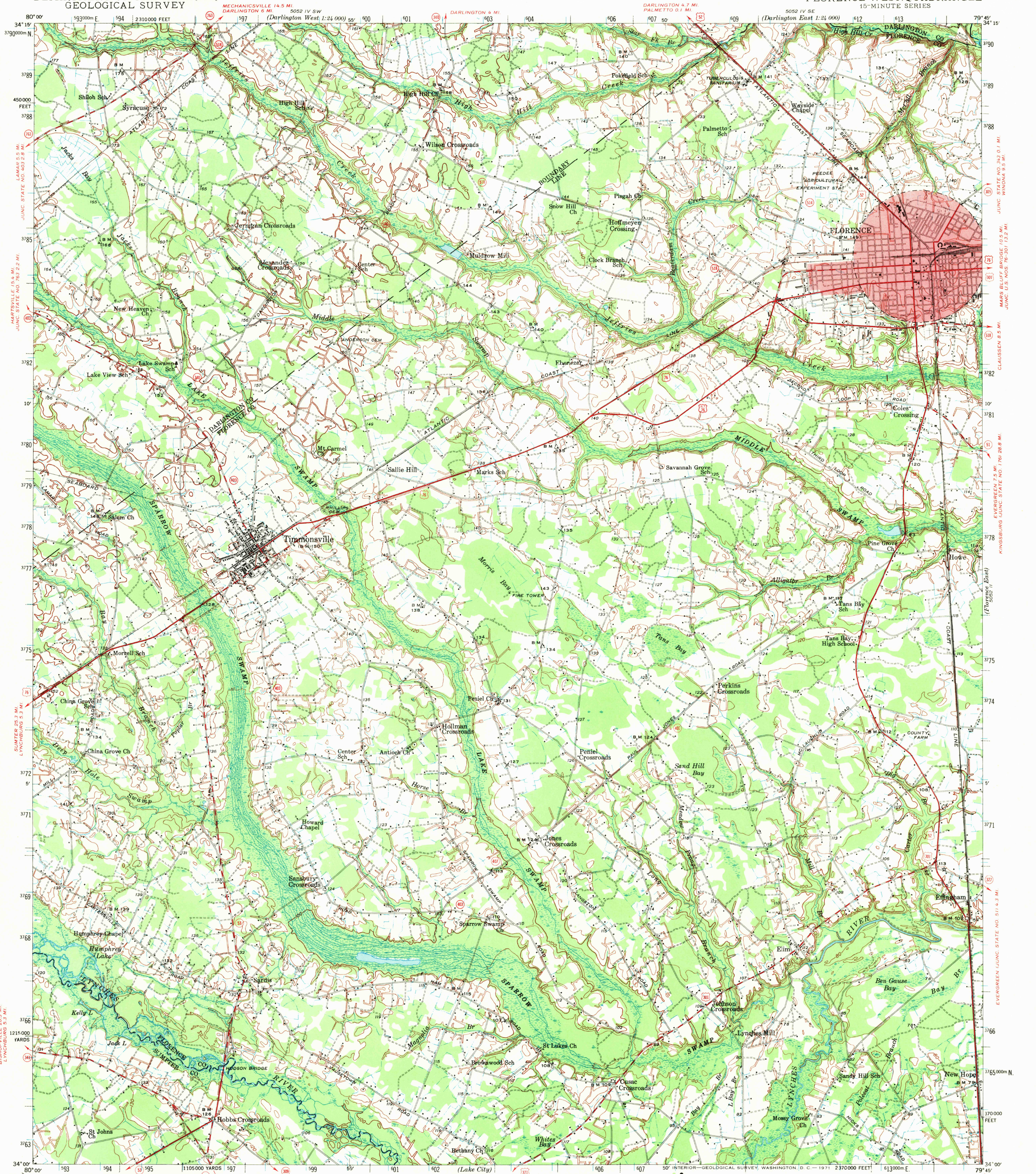


UNITED STATES
DEPARTMENT OF THE INTERIOR
GEOLOGICAL SURVEY

SOUTH CAROLINA
FLORENCE WEST QUADRANGLE
15-MINUTE SERIES



Topography by A. T. Fowler, Lindley Arthur,
C. H. Drown, and J. M. Jones
Surveyed in 1938-1940

JUNC. U.S. NO. 301 3 MI.
OLANTA 4.5 MI.
LAKE CITY 14.5 MI.

SCALE 1:62500
1 0 1 2 3 4 MILES
3000 0 3000 6000 9000 12000 15000 18000 21000 FEET
1 0 1 2 3 4 5 KILOMETERS

Contour interval 10 feet
Datum is mean sea level

ROAD CLASSIFICATION
Heavy-duty ——— Light-duty ———
Medium-duty ——— Unimproved dirt ———
U.S. Route ——— State Route ———

Polycyclic projection, 1927 North American datum,
5000 yard grid based on U. S. zone system, 8
10000 foot grid based on South Carolina (North)
rectangular coordinate system
1000-meter Universal Transverse Mercator grid ticks,
zone 17, shown in blue

FLORENCE WEST, S. C.
N3400—W7945/15
1940

FOR SALE BY U. S. GEOLOGICAL SURVEY, WASHINGTON, D. C. 20242
A FOLDER DESCRIBING TOPOGRAPHIC MAPS AND SYMBOLS IS AVAILABLE ON REQUEST

USGS
HISTORICAL FILE
TOPOGRAPHIC DIVISION

DEC 27 1971
1215

AMS 5052 III—SERIES V746