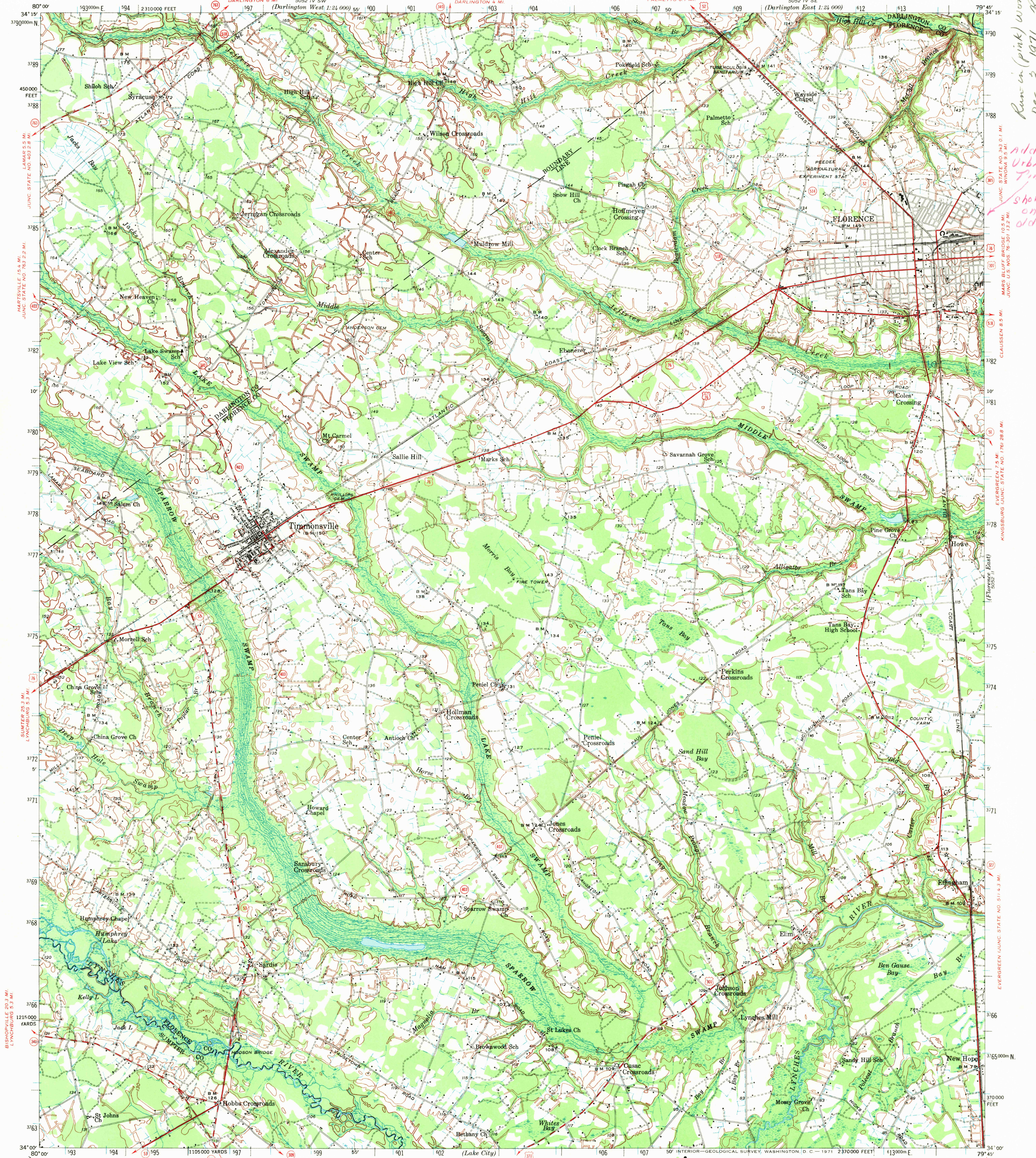


UNITED STATES
DEPARTMENT OF THE INTERIOR
GEOLOGICAL SURVEY

SOUTH CAROLINA
FLORENCE WEST QUADRANGLE
15-MINUTE SERIES



Topography by A. T. Fowler, Lindley Arthur, C. H. Drown, and J. M. Jones
Surveyed in 1938-1940

SCALE 1:62,500

Contour interval 10 feet
Datum is mean sea level

FOR SALE BY U. S. GEOLOGICAL SURVEY, WASHINGTON, D. C. 20242
A FOLDER DESCRIBING TOPOGRAPHIC MAPS AND SYMBOLS IS AVAILABLE ON REQUEST

ROAD CLASSIFICATION

- Heavy-duty
- Medium-duty
- Light-duty
- Unimproved dirt

USGS

U. S. Route

State Route

FLORENCE WEST, S. C.

N3400—W7945/15

1940

AMS 5052 III—SERIES V746

Polyconic projection, 1927 North American datum, 5000 yard grid based on U. S. zone system, B 10000 foot grid based on South Carolina (North) rectangular coordinate system, 1000-meter Universal Transverse Mercator grid ticks, zone 17, shown in blue

SEP 15 1971

1210