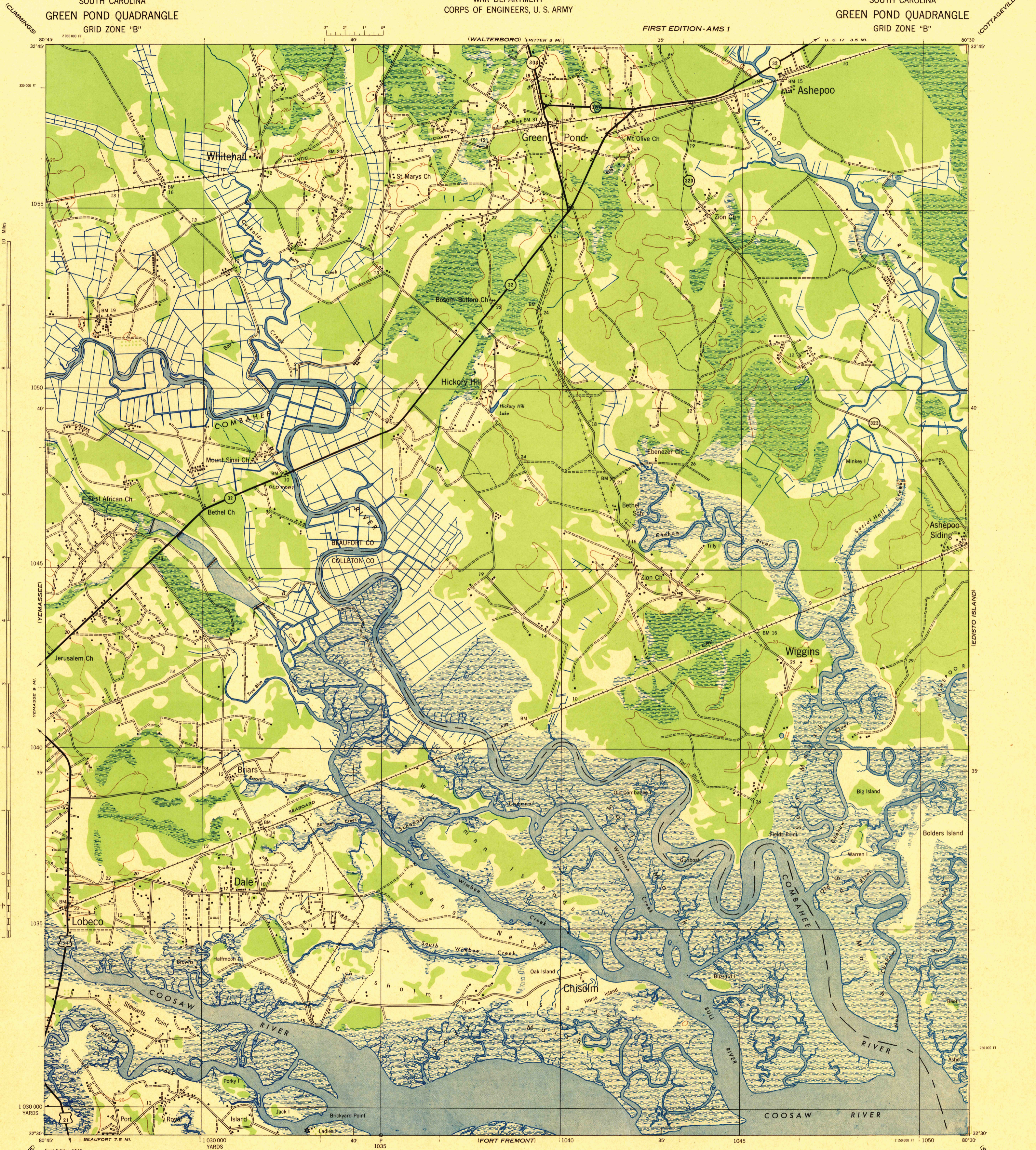


FIRST EDITION - AMS 1



First Edition 1943
Prepared under the direction of the Chief of Engineers, U. S. Army,
By Army Map Service, (OU), 1942.
Based on U. S. G. S. quadrangle, Green Pond, 1:62,500 (1918).
Control by U. S. G. S.
Surveyed by U. S. G. S. 1918.
Revised from single lens vertical aerial photographs.
Aerial photography, A. A. A. Department of Agriculture, 1938-39.
Polyconic Projection, North American Datum 1927.

Scale 1:62,500
Miles
1 2 3
1000 0 1000 2000 3000 4000 5000 Yards
CONTOUR INTERVAL 20 FEET
DATUM IS MEAN SEA LEVEL
FIVE THOUSAND YARD GRID COMPUTED FROM GRID SYSTEM FOR PROGRESSIVE MAPS.
IN THE U. S. ZONE B, U. S. C. & G. S. SPECIAL PUBLICATION NO. 59
THE LAST THREE DIGITS OF THE GRID NUMBERS ARE OMITTED.
SOUTH CAROLINA STATE GRID ZONE SOUTH IS INDICATED BY DOTTED
TICKS, OUTSIDE THE HEAT LINE AT 1000 FOOT INTERVALS.
NOTE: OFFICERS USING THIS MAP WILL HAVE JERSEY CORRECTIONS AND REVISIONS WHICH OWE
TO THEIR ATTENTION AND MAIL DIRECT TO THE CHIEF OF ENGINEERS, WASHINGTON, D. C.

ARMY MAP SERVICE, U. S. ARMY, WASHINGTON, D. C. 111703
1943

9/43 SX

H-15 ROAD CLASSIFICATION, 1942
Dependable hard surface, heavy duty road
Loose surface graded, dry weather road
Secondary hard surface, all-weather road
Dirt road
State Route
3 LANE 4 LANE
More than two lanes indicated by note along road with tick at point of change.

Use diagram only to obtain numerical values.
To determine magnetic north line connect the pivot point "P" on the north edge of the map with the value of the angle between grid and magnetic north, as plotted on the degree scale of the north edge of the map.
APPROXIMATE MEAN DECLINATION 1942 FOR CENTER OF SHEET
ANNUAL MAGNETIC CHANGE 1° DECREASE
GREEN POND, S. C.
N3230-W8030/15