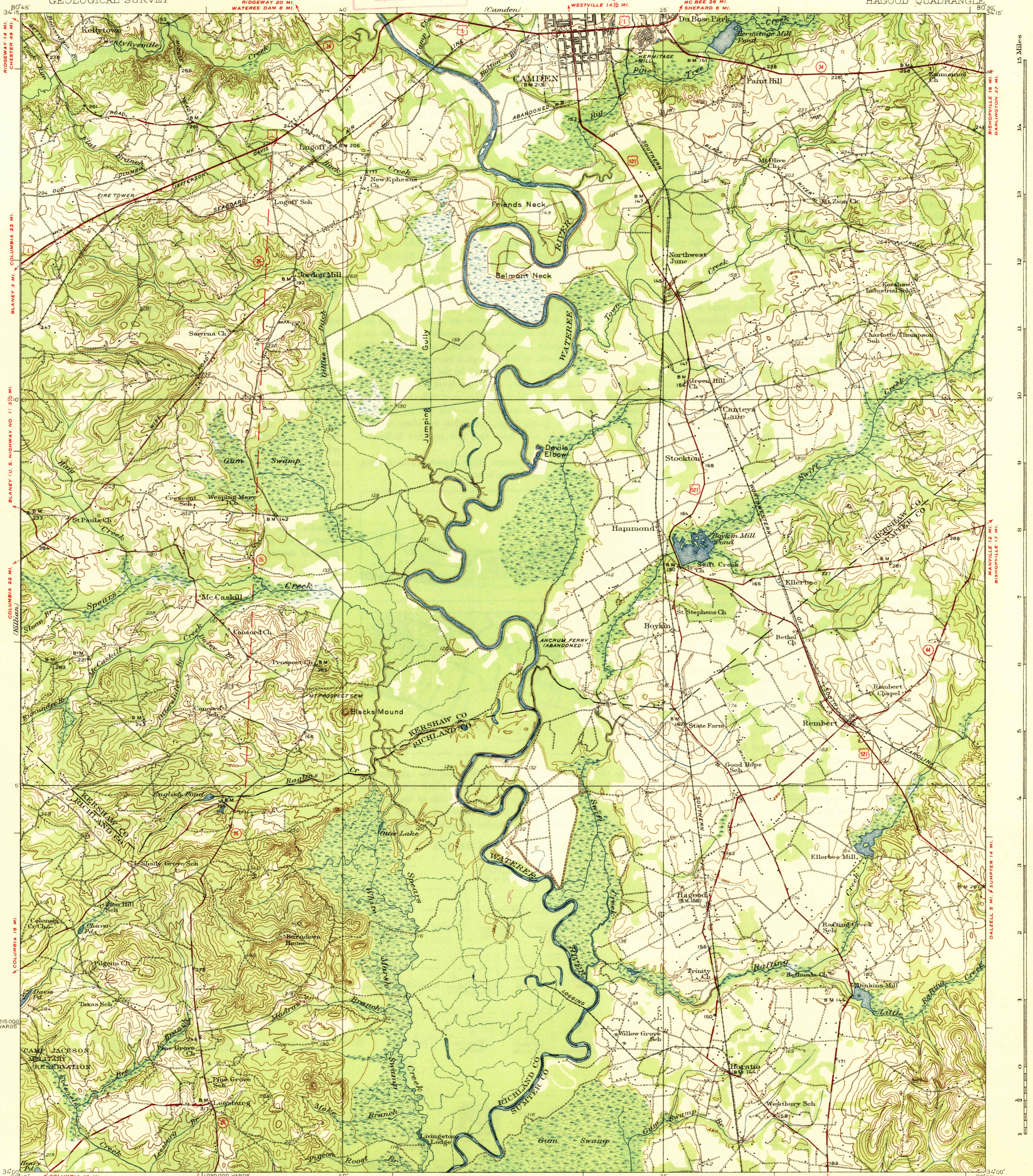


U. S. G. S.
FILE COPY
Inspection and Editing



Scale 1:25,000
1215,000 YARDS
Scale 1:25,000
1 2 3 4 Miles
5000 10000 15000 20000 Feet
1 2 3 4 5 Kilometers

Topography by R.J. Belton, G.A. Mock,
R.E. Hansen, and E.E. Van Brunt
Culture and drainage in part compiled from aerial photographs
taken by Air Corps U.S. Army
Surveyed in 1933-1934.

APPROXIMATE MEAN
DECLINATION, 1934

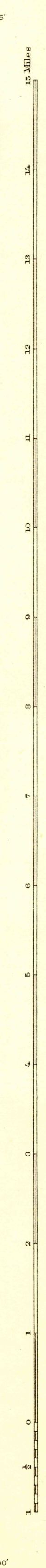
Contour interval 20 feet
Datum is mean sea level

STATEBURG U.S. HIGHWAY NO. 76 3 MI.
SUMTER 15 MI.

Polyconic projection. North American datum
5000 yard grid based upon U.S. zone system. B
HARD IMPERVIOUSLY SURFACED ROADS
OTHER MAIN TRAVELED ROADS

U. S. G. S.
FILE COPY
Inspection and Editing

1937
UNITED STATES HIGHWAY NUMBER
STATE HIGHWAY NUMBER
HAGOOD S.C.
Edition of 1938
2642:6050/99



Scale 1:25,000
1 2 3 4 Miles
5000 10000 15000 20000 Feet
1 2 3 4 5 Kilometers