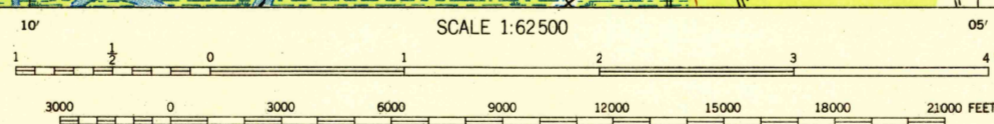
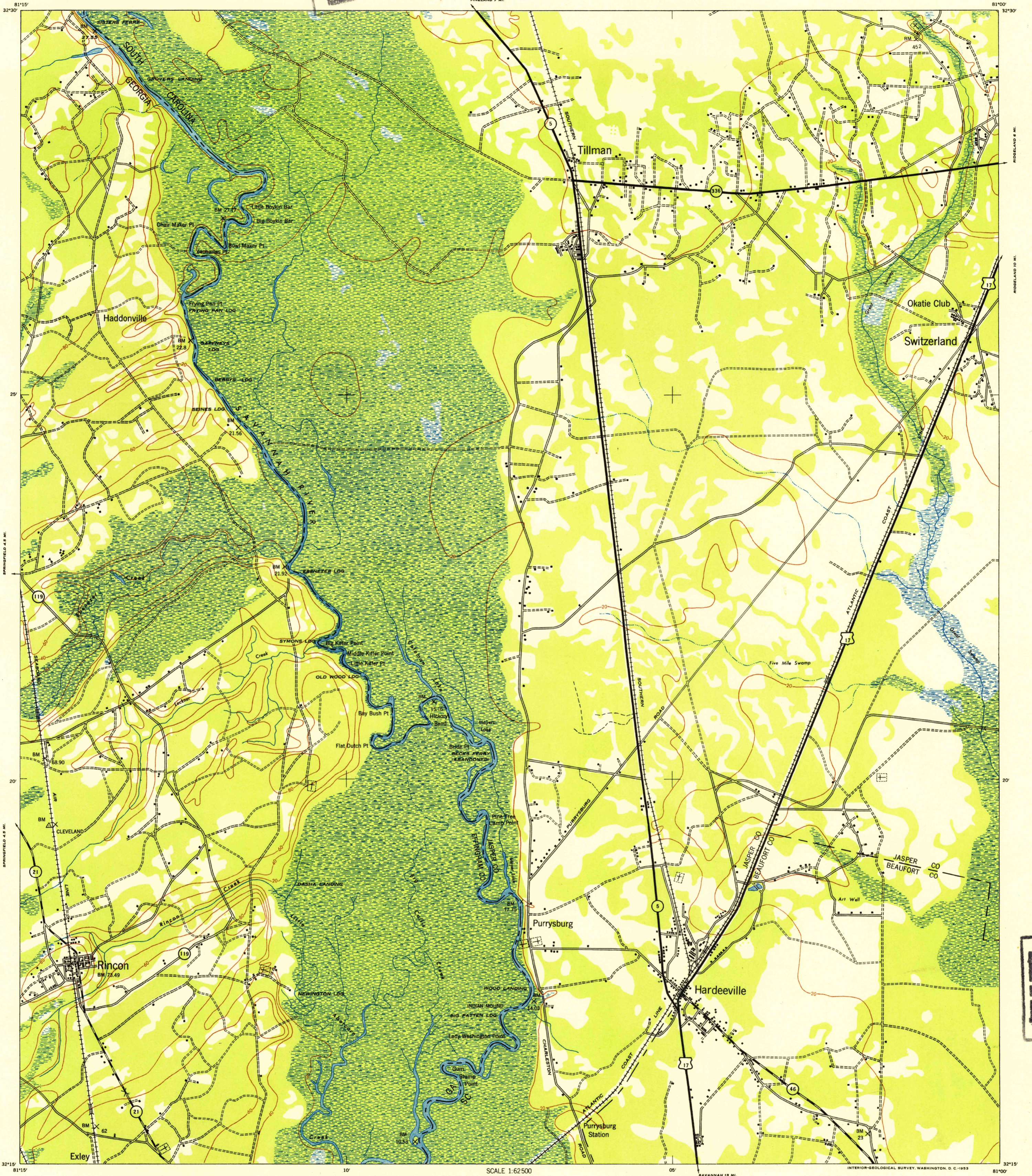
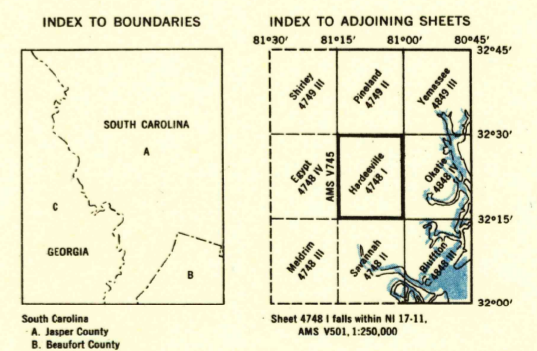


U.S.G.S. FILE COPY



CONTOUR INTERVAL 20 FEET
DATUM IS MEAN SEA LEVEL
POLYCONIC PROJECTION
1927 NORTH AMERICAN DATUM
REPRINTED FROM MILITARY EDITION FOR CIVIL USE
FOR SALE BY U.S. GEOLOGICAL SURVEY, WASHINGTON 25, D. C.
A FOLDER DESCRIBING TOPOGRAPHIC MAPS AND SYMBOLS IS AVAILABLE ON REQUEST

TRUE NORTH
MAGNETIC NORTH
APPROXIMATE MEAN DECLINATION, 1946



Prepared under the direction of the Chief of Engineers by the Army Map Service (AM), U. S. Army, Washington, D. C. Copied in 1946 from South Carolina, 1:62,500, AMS, Sheet 4748 I, 1943. Planimetry on original map revised from single lens photography by photo-planimetric methods. Aerial photography for Dept. of Agriculture, 1938. Horizontal and vertical control by USGS. Scale changed, one thousand yard grid added, and marginal data revised, 1946. This map complies with the national standard map accuracy requirements.

LEGEND
ROAD DATA 1942

Hard surface, heavy duty road	Loose surface, graded, dry-weather road
Hard surface, heavy duty road, more than two lanes wide	Trail; dirt road
Two lanes wide; Federal route marker	Railroad in street; Carline in street
Secondary, hard surface, all-weather road	
Two lanes wide; State route marker	

RAILROADS

Standard gauge	Single track	Double track
Narrow gauge	Single track	Double track

SOUNDING LINES

Single track carline	Double track carline
----------------------	----------------------

BOUNDARIES

International	State	County (with monument)	County subdivision	Reservation	Military reservation	School; Church	Cemetery	Churchyard
Miner	Triangulation station	Bench mark	Spot elevation	Woods	Woods-brushwood	Brushwood	Orchard	Vineyard
Intermittent lake	Intermittent stream	Dem	Rapids; Falls	Large rapids and falls	Swamp, marsh	Rocks wash at low tide	Wharf, pier	Man-made shoreline

USGS
Historical File
Topographic Division

HARDEEVILLE, S. C., GA.
N3215-W8100/15

JUL 15 1953