

LAKE CITY

SOUTH CAROLINA

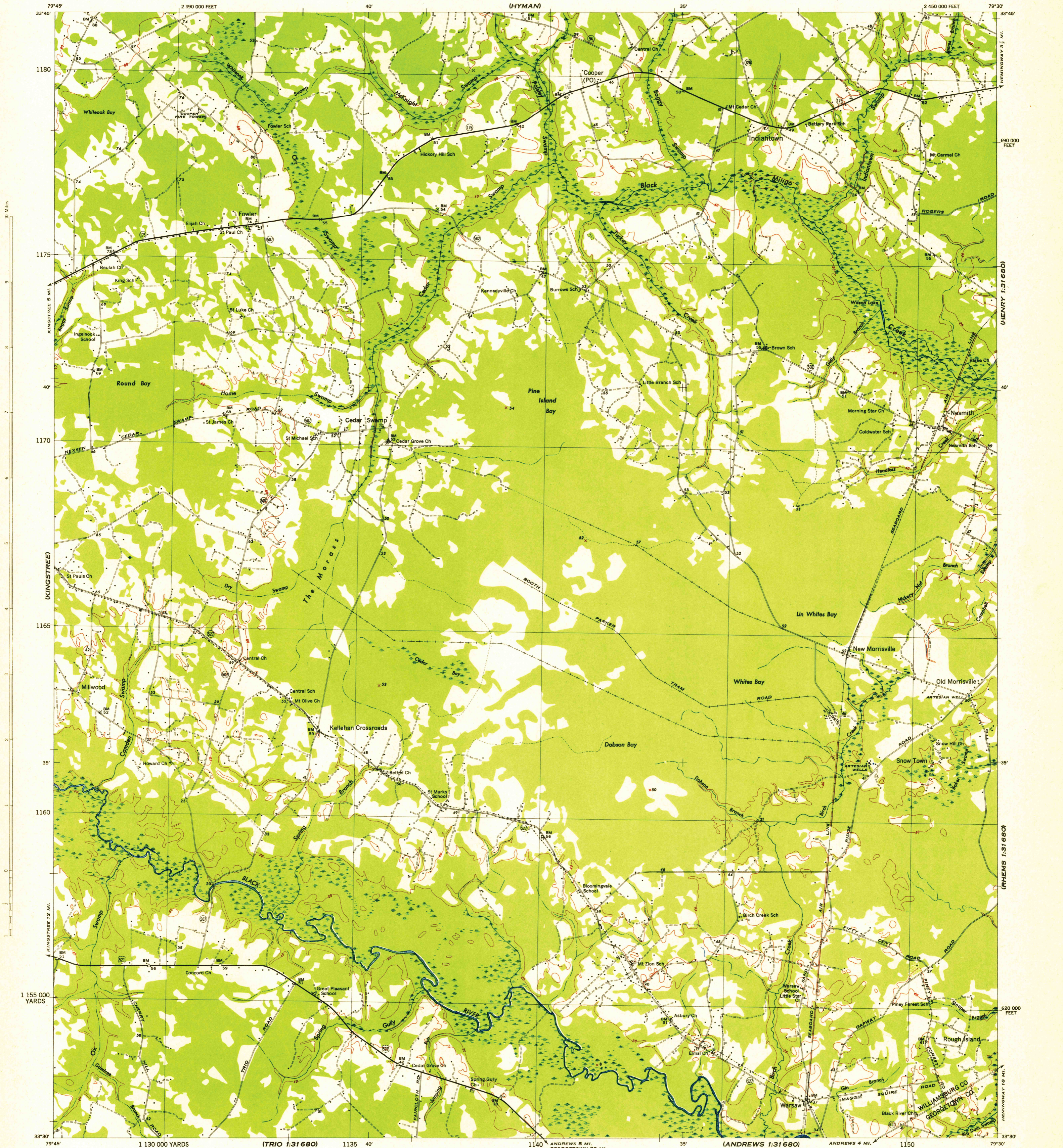
SCALE 1:62,500

WAR DEPARTMENT
CORPS OF ENGINEERS, U. S. ARMY

INDIANTOWN QUADRANGLE

15-MINUTE SERIES

JOHNSONVILLE



Mapped by Tennessee Valley Authority under direction of the Chief of Engineers, U. S. Army, 1943.
Control by USGS, USGS, SCGS, and TVA.
Topography by TVA plane table surveys.
Culture and drainage base by multiples.
Wide-angle photography for TVA, 1943.
Polyconic projection. 1927 North American datum.

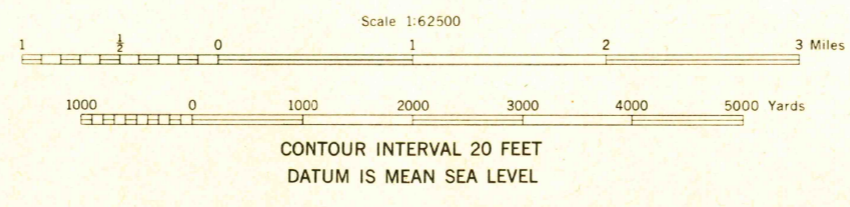
ROAD CLASSIFICATION 1943

Dependable hard-surface, heavy-duty road. Loose-surface graded, dry weather road. U. S. Route (20)

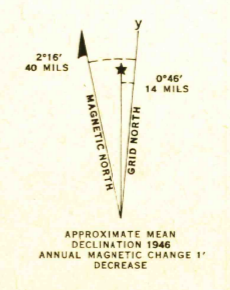
Secondary, hard-surface, all-weather road. Dirt road. State Route (75)

More than two lanes indicated by note along road with tick at point of change. 3 LANE 4 LANE

THIS MAP COMPLIES WITH THE NATIONAL STANDARD MAP ACCURACY REQUIREMENTS.



FIVE THOUSAND-YARD GRID COMPUTED FROM "GRID SYSTEM FOR PROGRESSIVE MAPS" IN THE U. S. ZONE 8 U. S. C. & G. S. SPECIAL PUBLICATION NO. 59. THE LAST THREE DIGITS OF THE GRID NUMBERS ARE OMITTED. TEN THOUSAND FOOT GRID BASED ON SOUTH CAROLINA PLANE COORDINATE SYSTEM, SOUTH ZONE. NOTE: OFFICERS USING THIS MAP WILL ADD CORRECTIONS AND ADDITIONS WHICH COME TO THEIR ATTENTION AND MAIL DIRECT TO THE ARMY MAP SERVICE, WASHINGTON, D. C.



REPRODUCED BY THE TENNESSEE VALLEY AUTHORITY
AMS 10-121430

INDIANTOWN, S. C.
N3330-W7930/15
EDITION OF 1946