

FLORENCE

SOUTH CAROLINA

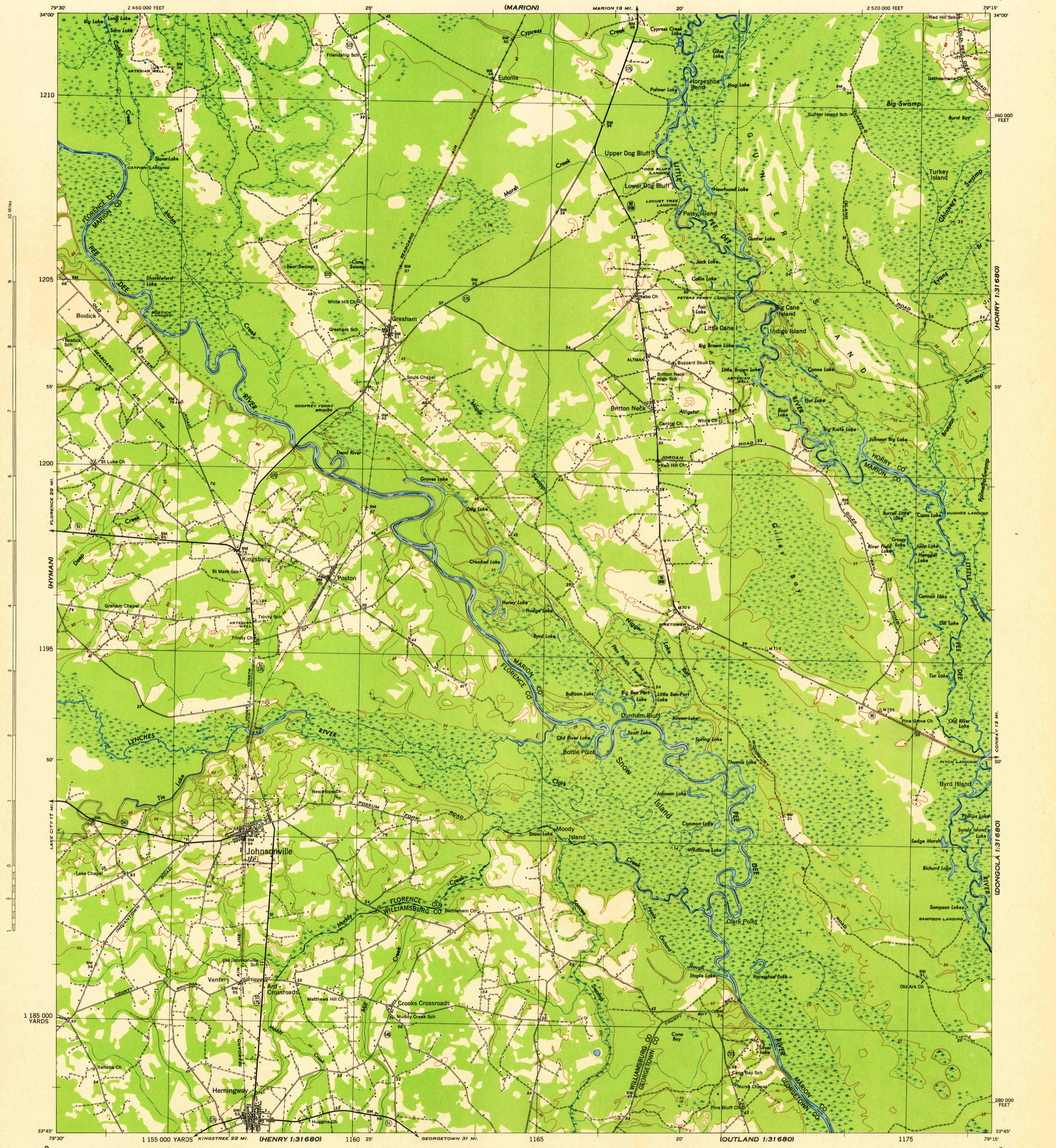
SCALE 1:62,500

WAR DEPARTMENT
CORPS OF ENGINEERS, U. S. ARMY

JOHNSONVILLE QUADRANGLE

15-MINUTE SERIES

NICHOLS



10 Miles

FLORENCE 29 MI.

LAKE CITY 17 MI.

1 185 000 YARDS

UNDIANTOWN

INDIAN TOWN

Map by Tennessee Valley Authority under direction of the Chief of Engineers, U. S. Army, 1943. Control by USCGS, USGS, USGS, SCGS and TVA. Topography by TVA plane-table surveys. Culture and drainage base by multiples. Wide-angle photography by TVA, 1943. Polyconic projection. 1927 North American datum.

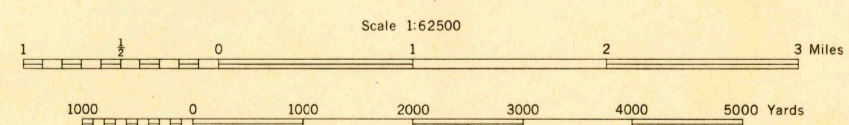
ROAD CLASSIFICATION 1943

Dependable hard-surface, heavy-duty road Loose-surface graded, dry weather road U. S. Route 70

Secondary, hard-surface, all-weather road Dirt road State Route 51

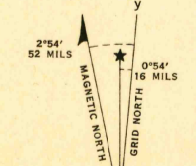
More than two lanes indicated by note along road with tick at point of change. **3 LANE 1 4 LANE**

THIS MAP COMPLIES WITH THE NATIONAL STANDARD MAP ACCURACY REQUIREMENTS.



CONTOUR INTERVAL 20 FEET
DATUM IS MEAN SEA LEVEL

FIVE THOUSAND YARD GRID COMPUTED FROM "GRID SYSTEM FOR PROGRESSIVE MAPS IN THE U. S. ZONE 8 U. S. C. & G. S. SPECIAL PUBLICATION NO. 53" IN THE LAST THREE DIGITS OF THE GRID NUMBERS ARE OMITTED. TEN THOUSAND FOOT GRID BASED ON SOUTH CAROLINA PLANE COORDINATE SYSTEM, NORTH ZONE. NOTE: OFFICERS USING THIS MAP WILL ADD JERSON CORRECTIONS AND ADDITIONS WHICH COME TO THEIR ATTENTION AND MAIL DIRECT TO THE ARMY MAP SERVICE, WASHINGTON, D. C.



REPRODUCED BY THE TENNESSEE VALLEY AUTHORITY
AMS NO. 121419

JOHNSONVILLE, S. C.
N3345-W7915/15
EDITION OF 1946

(HERRY 1:31680)

(CONWAY 1:31680)

(DONGOLA 1:31680)

(YALHANNAN 1:31680)