

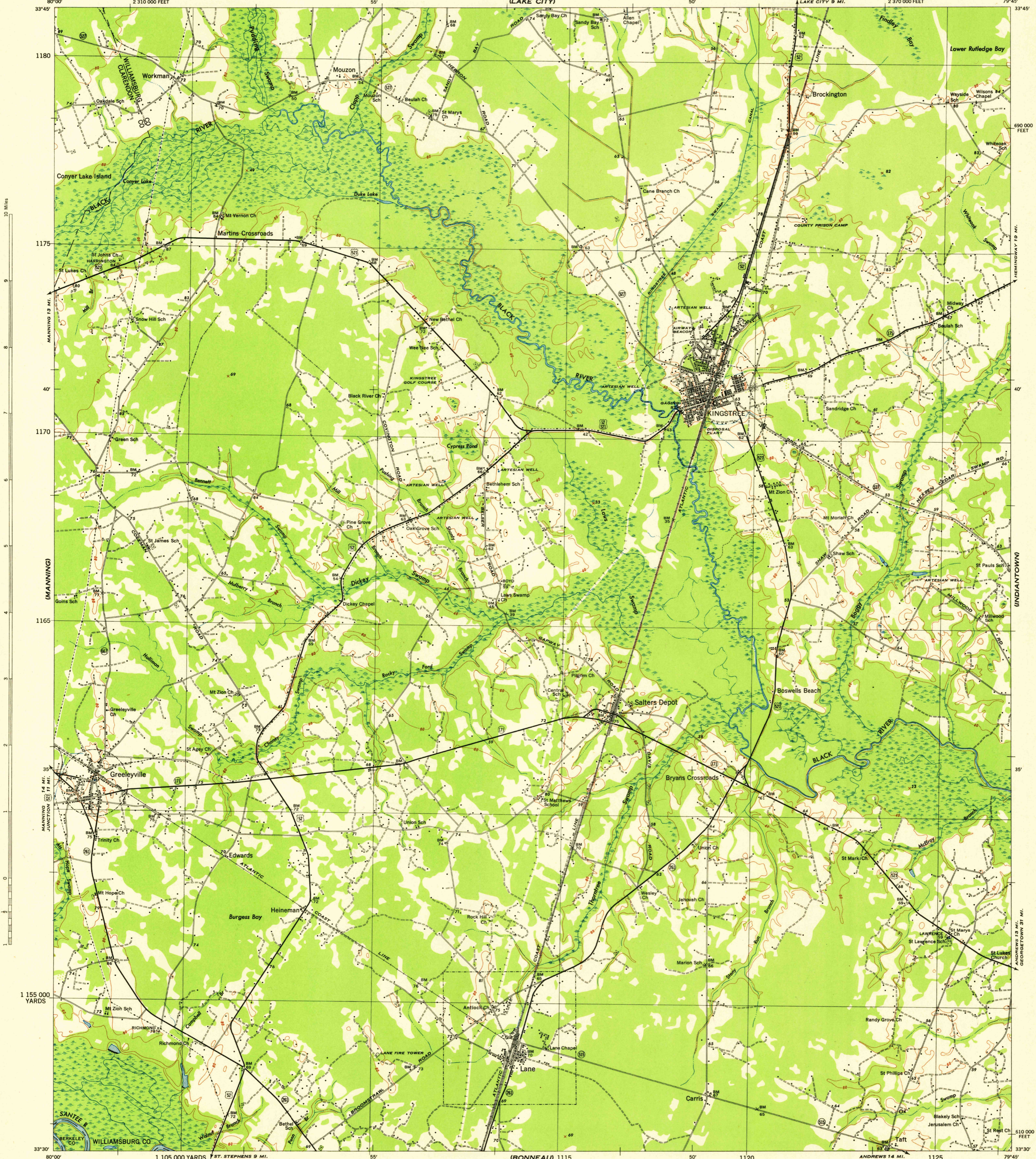
SOUTH CAROLINA
SCALE 1:62,500

WAR DEPARTMENT
CORPS OF ENGINEERS, U. S. ARMY

KINGSTREE QUADRANGLE
15-MINUTE SERIES

(WAYSVILLE)

(HYMAN)



10 Miles

(MANNING)

14 MI. 11 MI.

1 155 000 YARDS

(CHICORA)

690 000 FEET

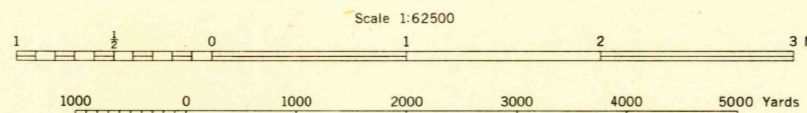
(INDIANTOWN)

1 155 000 YARDS

(TRIO 1:31600)

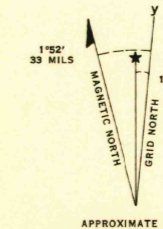
Maped by Tennessee Valley Authority under direction of the Chief of Engineers, U. S. Army, 1943. Control by USGS, USGS, SCOS, and TVA. Topography by TVA plane-table surveys. Culture and drainage base by multiplex. Wide-angle photography for TVA, 1945. Polyconic projection. 1927 North American datum.

ROAD CLASSIFICATION 1943
Dependable hard-surface, heavy-duty road. U. S. Route
Loose-surface graded, dry weather road. State Route
Secondary, hard-surface, all-weather road. Dirt road. Lane's Lane
More than two lanes indicated by note along road with tick at point of change.



CONTOUR INTERVAL 20 FEET
DATUM IS MEAN SEA LEVEL

FIVE THOUSAND YARD GRID COMPUTED FROM "GRID SYSTEM FOR PROGRESSIVE MAPS IN THE U. S. ZONE B. U. S. C. A. G. S. SPECIAL PUBLICATION NO. 59 THE LAST THREE DIGITS OF THE GRID NUMBERS ARE OMITTED. NOTE. OFFICERS USING THIS MAP WILL AND MAKE CORRECTIONS AND ADJUSTMENTS WHICH OWE TO THEIR ATTENTION AND MAIL DIRECT TO THE ARMY MAP SERVICE, WASHINGTON, D. C.



RETURN TO:
USGS NMD HISTORICAL MAP ARCHIVES

KINGSTREE, S. C.
N3330-W7945/15
EDITION OF 1948

THIS MAP COMPLIES WITH THE NATIONAL STANDARD MAP ACCURACY REQUIREMENTS.