

(HARTSVILLE 1:125,000)

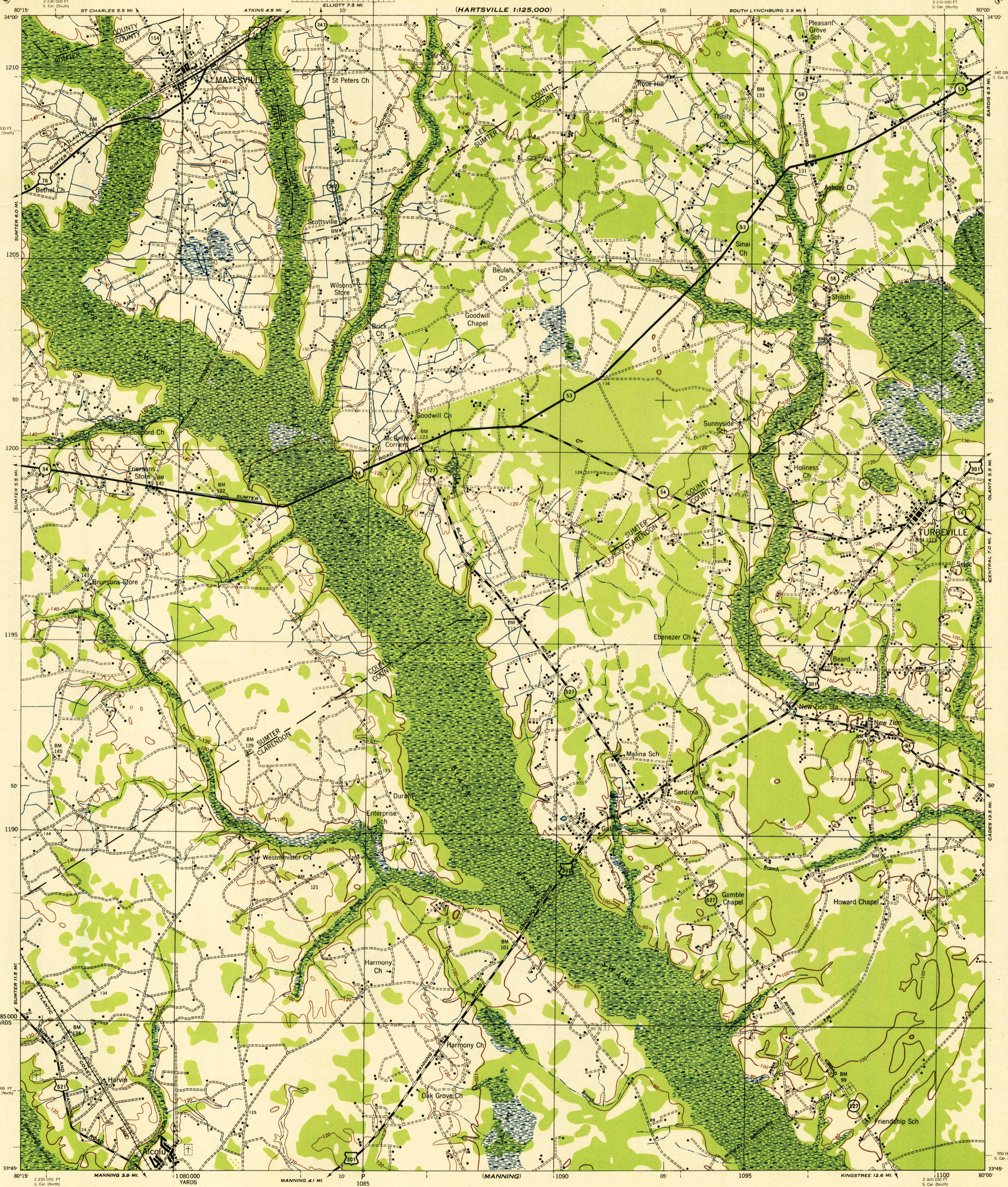
(HARTSVILLE 1:125,000)

SOUTH CAROLINA 1:62,500

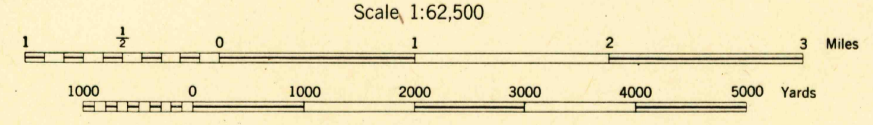
WAR DEPARTMENT  
CORPS OF ENGINEERS, U. S. ARMY

FIRST EDITION-AMS 1

MAYESVILLE QUADRANGLE  
15 MINUTE SERIES

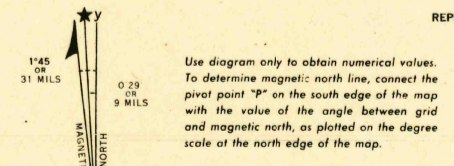


First Edition 1943.  
Prepared under the direction of the Chief of Engineers, U. S. Army, 1943.  
Army Map Service, East St. Louis unit.  
Based on U. S. G. S. quadrangle, Mayesville, 1:62,500 (1921).  
Control by U. S. Geological Survey.  
Surveyed in cooperation with the War Department, 1919.  
Revised from single lens vertical aerial photographs.  
Aerial photography - A. A. Department of Agriculture, 1940-1941.  
Polyconic Projection, North American Datum.



CONTOUR INTERVAL 20 FEET  
DATUM IS MEAN SEA LEVEL

FIVE THOUSAND YARD GRID COMPUTED FROM GRID SYSTEM FOR PROGRESSIVE MAPS  
IN THE U. S. ZONE 18 U. S. G. S. SPECIAL PUBLICATION NO. 59  
THE LAST THREE DIGITS OF THE GRID NUMBERS ARE OMITTED  
THE STATE GRIDS ARE INDICATED FOR SOUTH CAROLINA, ZONE SOUTH BY TICKS FOR SOUTH  
CAROLINA, ZONE NORTH BY TICKS, OUTSIDE THE NEAT LINE AT 10,000 FOOT INTERVALS.  
NOTE: OFFICERS USING THIS MAP WILL MARK HEREON CORRECTIONS AND ADDITIONS WHICH COME  
TO THEIR ATTENTION AND MAIL DIRECT TO THE CHIEF OF ENGINEERS, WASHINGTON, D. C.



REPRODUCED BY 65TH ENGINEER BATTALION  
OCTOBER 1943

MAYESVILLE, S. C.  
N3345W8000/15

H-15 ROAD CLASSIFICATION 1942  
Dependable hard surface, heavy-duty road, U.S. Route 160  
Secondary hard surface, all-weather road, State Route 30  
Dirt road, 3 LANE, 2 LANE  
More than two lanes indicated by note along road with tick at point of change.

APPROXIMATE MEAN DECLINATION 1943  
FOR CENTER OF SHEET  
ANNUAL MAGNETIC CHANGE: DECREASE