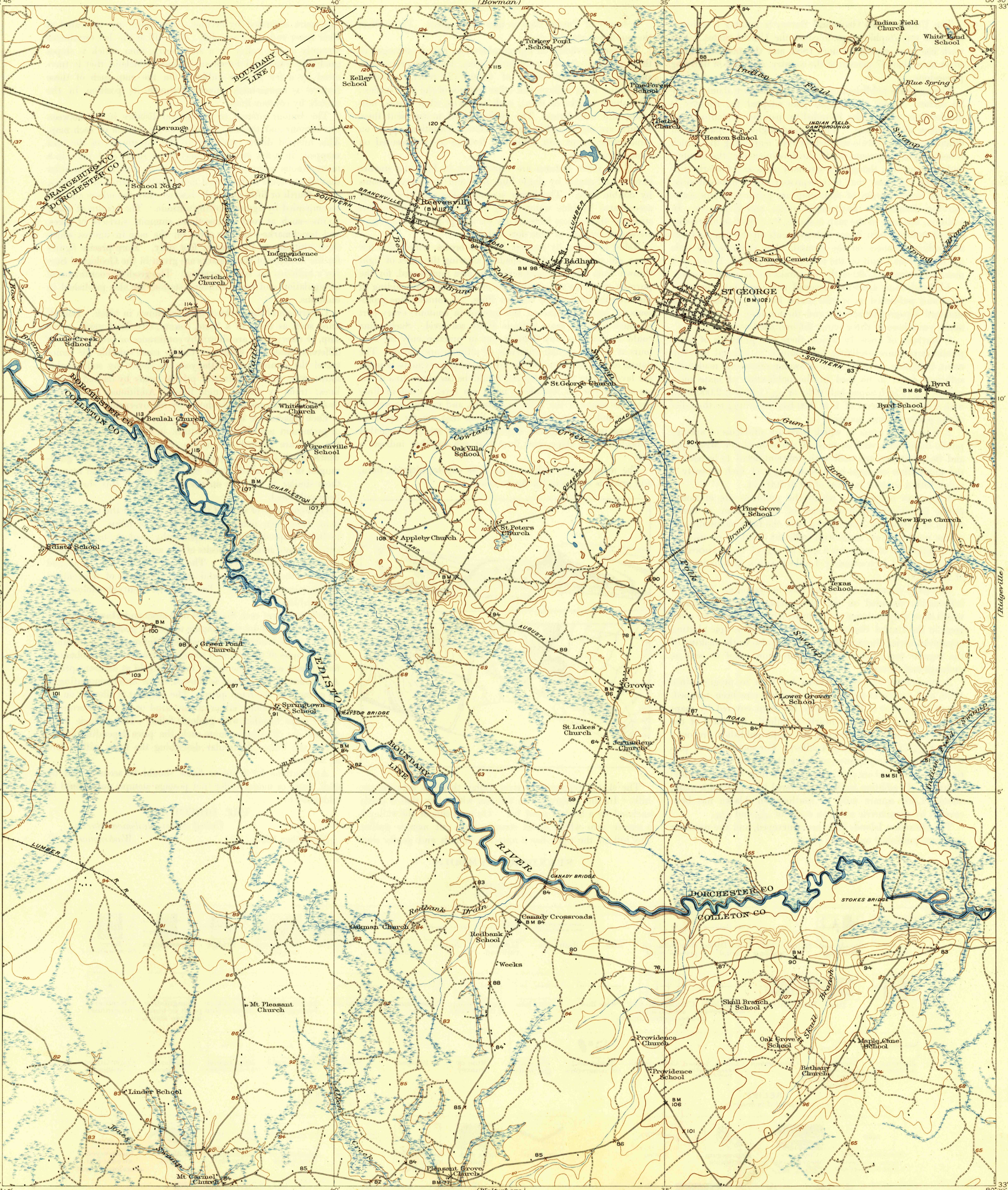


U. S. G. S.
FILE COPY
Inspection and Editing.

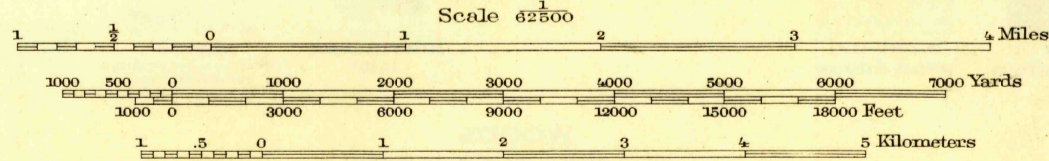
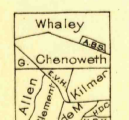
UNITED STATES
DEPARTMENT OF THE INTERIOR
GEOLOGICAL SURVEY

WAR DEPARTMENT
CORPS OF ENGINEERS, U. S. ARMY
(Bowman)

SOUTH CAROLINA
ST. GEORGE QUADRANGLE



R. B. Marshall, Chief Geographer.
W. H. Herron, Geographer in charge.
Topography by C. W. Goodlove, A. B. Searle, F. L. Whaley,
W. R. Chenoweth, H. R. Kilmer, E. V. Holloway, Edgar Allen,
H. D. Clement, and C. R. de Medicis
Control by E. L. McNair, R. G. Clinthe, and F. L. Shalibo.
Surveyed in 1919.



Contour interval 10 feet
Datum is mean sea level

Polyconic projection, North American datum.

USGS
HISTORICAL FILE
TOPOGRAPHIC DIVISION

S. C.
ST. GEORGE
Edition of 1921.
reprinted 1945
N3300-W 8030/15

U. S. G. S.
FILE COPY
Inspection and Editing.