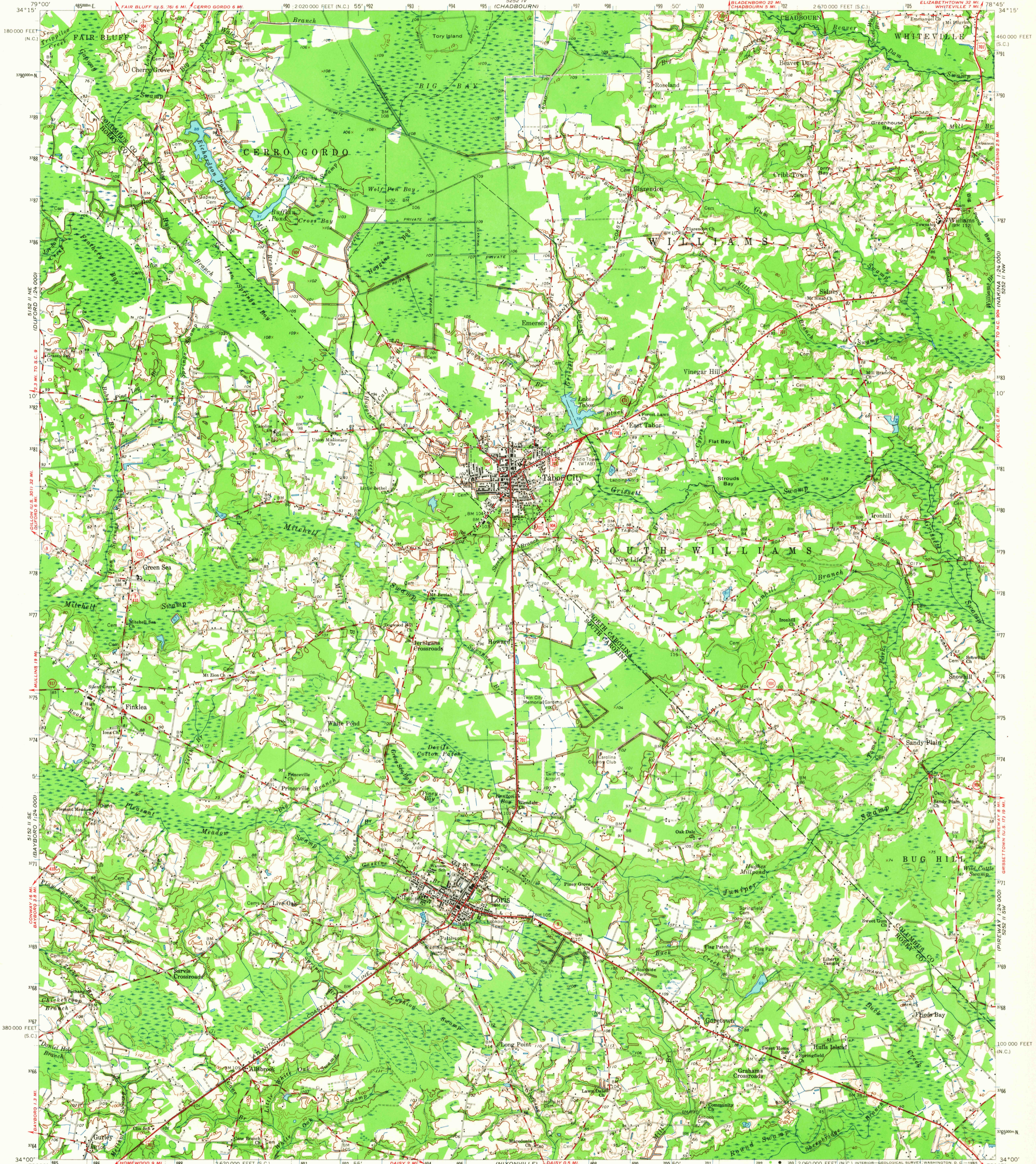
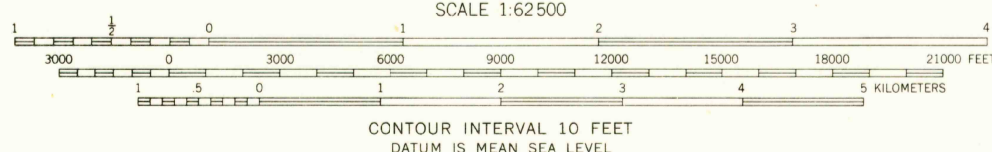


UNITED STATES
DEPARTMENT OF THE INTERIOR
GEOLOGICAL SURVEY

TABOR CITY QUADRANGLE
SOUTH CAROLINA-NORTH CAROLINA
15 MINUTE SERIES (TOPOGRAPHIC)



Mapped, edited, and published by the Geological Survey
Control by USGS, USC&GS, and South Carolina Geodetic Survey
Compiled in 1965 from 1:24,000-scale maps dated 1962
Polyconic projection. 1927 North American datum
10,000-foot grids based on South Carolina coordinate system,
north zone, and North Carolina coordinate system
1000-meter Universal Transverse Mercator grid ticks,
zone 17, shown in blue
Short blue dashed lines indicate elliptical bay outlines
visible on aerial photographs



ROAD CLASSIFICATION
Heavy-duty ——— Light-duty ———
Medium-duty ——— Unimproved dirt - - - - -
U.S. Route ——— State Route ———



THIS MAP COMPLIES WITH NATIONAL MAP ACCURACY STANDARDS
FOR SALE BY U.S. GEOLOGICAL SURVEY, WASHINGTON, D.C. 20242
A FOLDER DESCRIBING TOPOGRAPHIC MAPS AND SYMBOLS IS AVAILABLE ON REQUEST

This area also covered by 7.5-minute, 1:24,000-scale
maps: Tabor City East 1962, Tabor City West 1962,
Loris 1962, and Gortown 1962
TABOR CITY, S.C.—N.C.
N3400—W7845/15

1962

AMS 5252 III—SERIES V746