

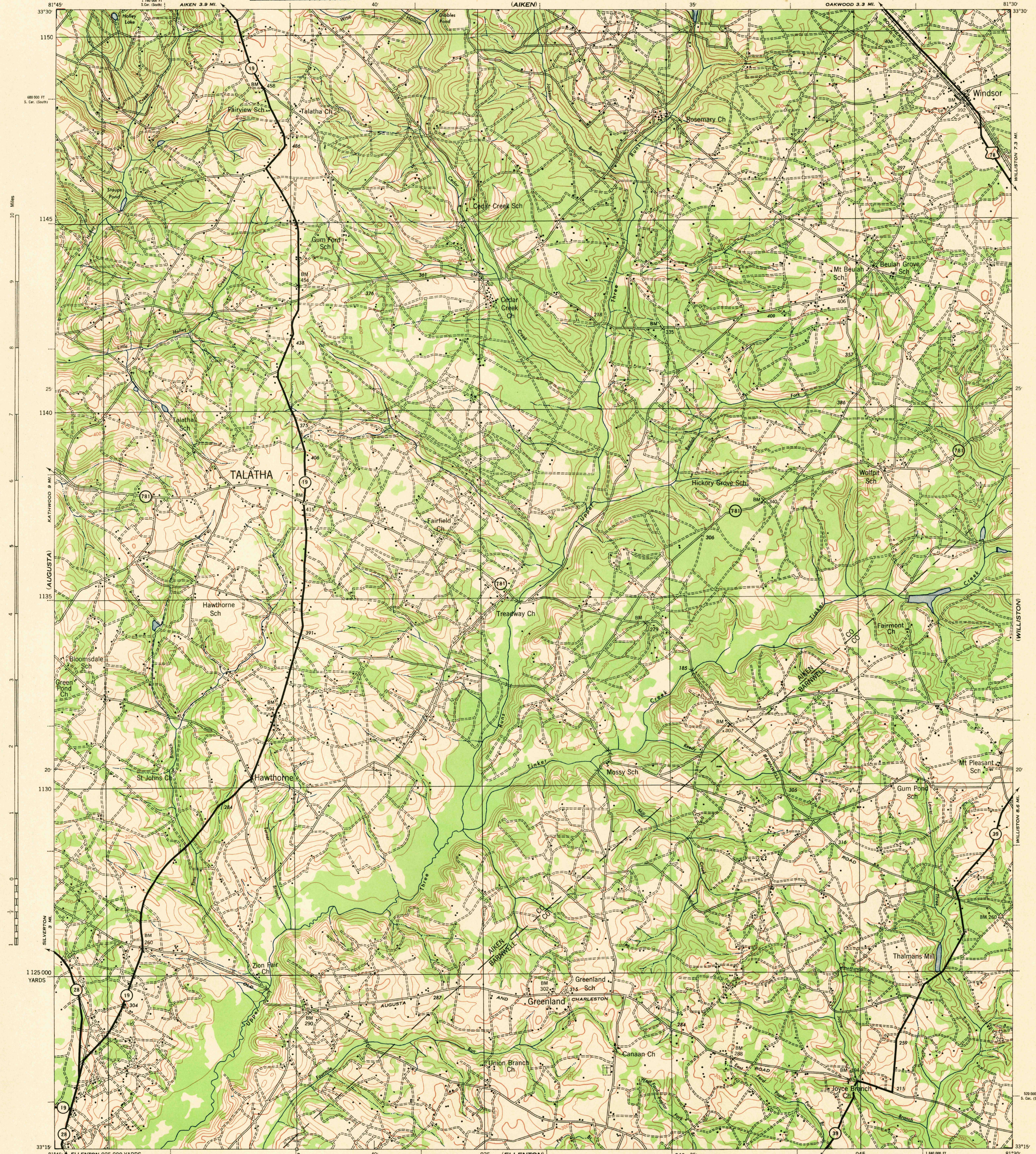
WARRENVILLE

SOUTH CAROLINA
TALATHA QUADRANGLE
GRID ZONE "B"

WAR DEPARTMENT
CORPS OF ENGINEERS, U. S. ARMY

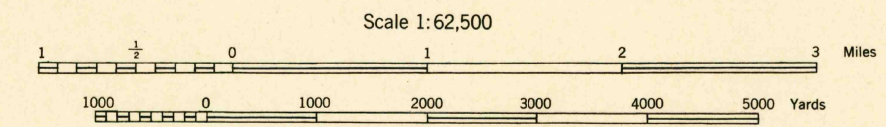
SOUTH CAROLINA
TALATHA QUADRANGLE
GRID ZONE "B"

FIRST EDITION - AMS 1



Miles
10
9
8
7
6
5
4
3
2
1
0
1
2
3
4
5
6
7
8
9
10
YARDS
1125 000

First Edition 1943
Prepared under the direction of the Chief of Engineers, U. S. Army, by the Army Map Service, East St. Louis unit, 1942.
Based on U. S. G. S. quadrangle, Talatha, 1:62,500 (1921).
Horizontal control by U. S. C. & G. S. and U. S. C. & S.
Surveyed in cooperation with the War Department, 1918.
Revised from single lens vertical aerial photographs.
Aerial photography - A. A. Department of Agriculture, 1938.
Polyconic Projection, North American Datum 1927.



Scale 1:62,500
CONTOUR INTERVAL 20 FEET
DATUM IS MEAN SEA LEVEL
FIVE THOUSAND YARD GRID COMPUTED FROM GRID SYSTEM FOR PROGRESSIVE MAPS IN THE U. S. ZONE B, U. S. C. & G. S. SPECIAL PUBLICATION NO. 59
THE STATE GRID IS INDICATED AT 10,000 FOOT INTERVALS
NOTE: OFFICERS USING THIS MAP WILL MAKE NECESSARY CORRECTIONS AND ADDITIONS WHICH COME TO THEIR ATTENTION AND MAIL TO THE CHIEF OF ENGINEERS, WASHINGTON, D. C.

APPROXIMATE MEAN DECLINATION 1943
FOR CENTER OF SHEET
ANNUAL MAGNETIC CHANGE 1" INCREASE
Use diagram only to obtain numerical values. To determine magnetic north line, connect the pivot point "P" on the south edge of the map with the value of the angle between grid and magnetic north, as plotted on the degree scale of the north edge of the map.

H-15 ROAD CLASSIFICATION 1942
Dependable hard-surface, heavy-duty road. U. S. Route 160
Loose-surface graded, dry weather road. U. S. Route 160
Secondary, hard-surface, all-weather road. State Route 30
Dirt road. 3 LANE | 4 LANE
More than two lanes indicated by note along road with tick at point of change.

10/43
U. S. G. S.
FILE COPY
Washington and Chicago

TALATHA, S. C.
N3315-W8130/15

ALLEDALE