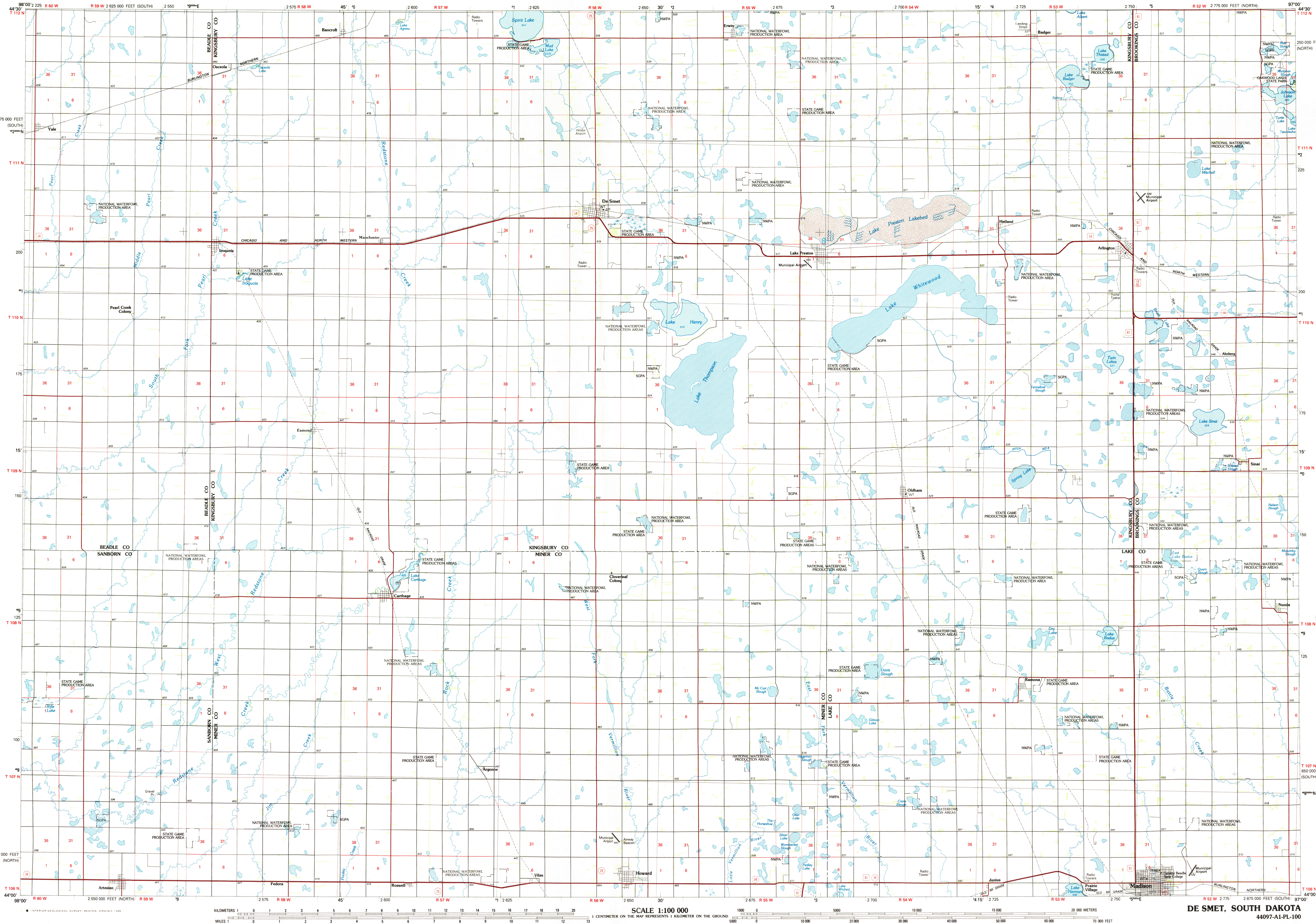


## DE SMET, SOUTH DAKOTA

### 30 X 60 MINUTE SERIES (PLANIMETRIC)

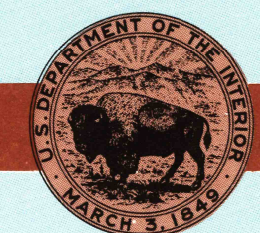


**De Smet**  
SOUTH DAKOTA

1:100 000-scale  
planimetric map



- Elevations in meters
- Highways, roads and other manmade structures
- Water features
- Woodland areas
- Geographic names



1985

Produced by the United States Geological Survey

Compiled from USGS 1:24 000-scale topographic maps dated 1968-1971. Planimetry revised from aerial photographs taken 1984 and other source data.  
Revised information not field checked  
Map edited 1985

Projection and 10 000-meter grid, zone 14  
Universal Transverse Mercator  
25 000-foot grid ticks based on South Dakota coordinate system, north and south zones. 1927 North American Datum  
To place on the predicted North American Datum 1983 move the projection lines 7 meters north and 28 meters east

There may be private inholdings within the boundaries of the National or State reservations shown on this map

NATIONAL GEODETIC VERTICAL DATUM OF 1929  
ELEVATIONS SHOWN TO THE NEAREST METER

THIS MAP COMPLIES WITH NATIONAL MAP ACCURACY STANDARDS:

CONVERSION TABLE		DECLINATION DIAGRAM		ADJOINING MAPS	
Meters	Feet			1	2
1	3.2808	1°03' 65" 19 MILS 116 MILS		4	5
2	6.5617			6	7
3	9.8425			7	8
4	13.1234			8	9
5	16.4042			9	10
6	19.6850				
7	22.9659				
8	26.2467				
9	29.5275				
10	32.8084				
To convert meters to feet multiply by 3.2808		UTM grid convergence (1961 and 1983 magnetic declination (MN) at center of map Diagram is approximate		1 Redfield 2 Watertown 3 Clear Lake 4 Fresno 5 Brookings 6 Chico 7 Slaus Falls	
To convert feet to meters multiply by 0.3048					

FOR SALE BY U.S. GEOLOGICAL SURVEY, DENVER, COLORADO 80213  
OR RESTON, VIRGINIA 22092

MAR 14 1986

EC'D FILE COPY

## Topographic Map Symbols

- |   |  |
|---|--|
| Primary highway, hard surface                               |  |
| Secondary highway, hard surface                             |  |
| Light duty road, principal street, hard or improved surface |  |
| Other road or street; trail                                 |  |
| Route marker: Interstate, U. S. State                       |  |
| Railroad: standard gage; narrow gage                        |  |
| Bridge; overpass; underpass                                 |  |
| Tunnel: road; railroad                                      |  |
| Build up area; locality; elevation                          |  |
| Airport; landing field; landing strip                       |  |
| National boundary   |  |
| State boundary  |  |
| County boundary   |  |
| National or State reservation boundary                      |  |
| Land grant boundary   |  |
| U. S. public lands survey: range, township; section         |  |
| Range, township; section line: protracted                   |  |
| Power transmission line; pipeline                           |  |
| Dam; dam with lock  |  |
| Cemetery; building  |  |
| Windmill; water well; spring                                |  |
| Mine shaft; adit or cave; mine; quarry                      |  |
| Compound; picnic area; U. S. location monument              |  |
| Ruins; cliff dwelling                                       |  |
| Disturbed area; strip mine; lava; sand                      |  |
| Contours: index, intermediate; supplementary                |  |
| Bathymetric contours: index; intermediate                   |  |
| Stream, lake; perennial; intermittent                       |  |
| Rapids, large and small; falls, large and small             |  |
| Area to be submerged; marsh, swamp                          |  |
| Land subject to controlled inundation; woodland             |  |
| Sinks; mangrove   |  |
| Geobased vignette   |  |

A pamphlet describing topographic maps is available on request

DE SMET, SOUTH DAKOTA

44097-A1-PL-100

1985