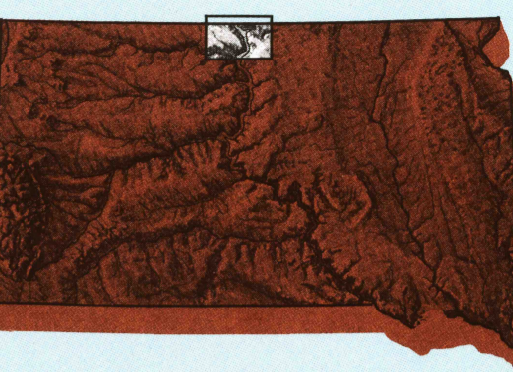


MOBRIDGE, SOUTH DAKOTA-NORTH DAKOTA

30x60 MINUTE SERIES (TOPOGRAPHIC)

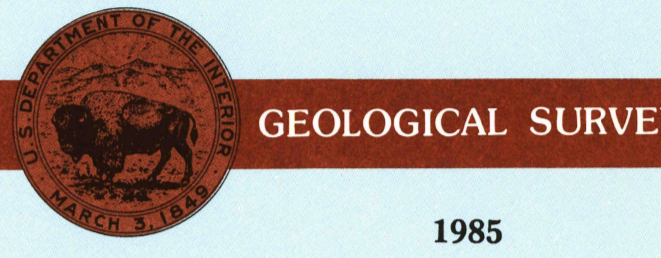
Mobridge SOUTH DAKOTA-NORTH DAKOTA

1:100 000-scale metric topographic map



30 X 60 MINUTE QUADRANGLE SHOWING

- Contours and elevations in meters
- Highways, roads and other manmade structures
- Water features
- Woodland areas
- Geographic names



Produced by the United States Geological Survey
 Compiled from USGS 1:24 000-scale topographic maps dated 1956-1978. Planimetry revised from aerial photographs taken 1968 and other source data. Revised information not field checked. Map edited 1985.
 Projection and 10 000-meter grid, zone 14, Universal Transverse Mercator
 25 000-foot grid ticks based on South Dakota coordinate system, north zone and North Dakota coordinate system, south zone 1927 North American Datum
 To place on the predicted North American Datum 1983, move the projection lines 6 meters north and 34 meters east
 There may be private inholdings within the boundaries of the National or State reservations shown on this map

CONTOUR INTERVAL 10 METERS
 NATIONAL GEODETIC VERTICAL DATUM OF 1929
 ELEVATIONS SHOWN TO THE NEAREST METER

THIS MAP COMPLIES WITH NATIONAL MAP ACCURACY STANDARDS

Meters	Feet
1	3.2808
2	6.5617
3	9.8425
4	13.1234
5	16.4043
6	19.6852
7	22.9660
8	26.2469
9	29.5278
10	32.8084

To convert meters to feet multiply by 3.2808
 To convert feet to meters multiply by 0.3048

Declination	1983	1984	1985
1°04'	19 MILES	19 MILES	19 MILES

UTM grid convergence (CM) and 100 magnetic declination (MM) at center of map
 Diagram is approximate

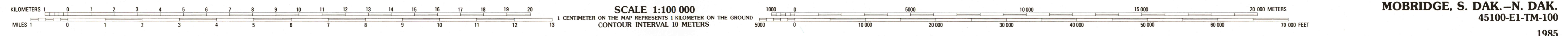
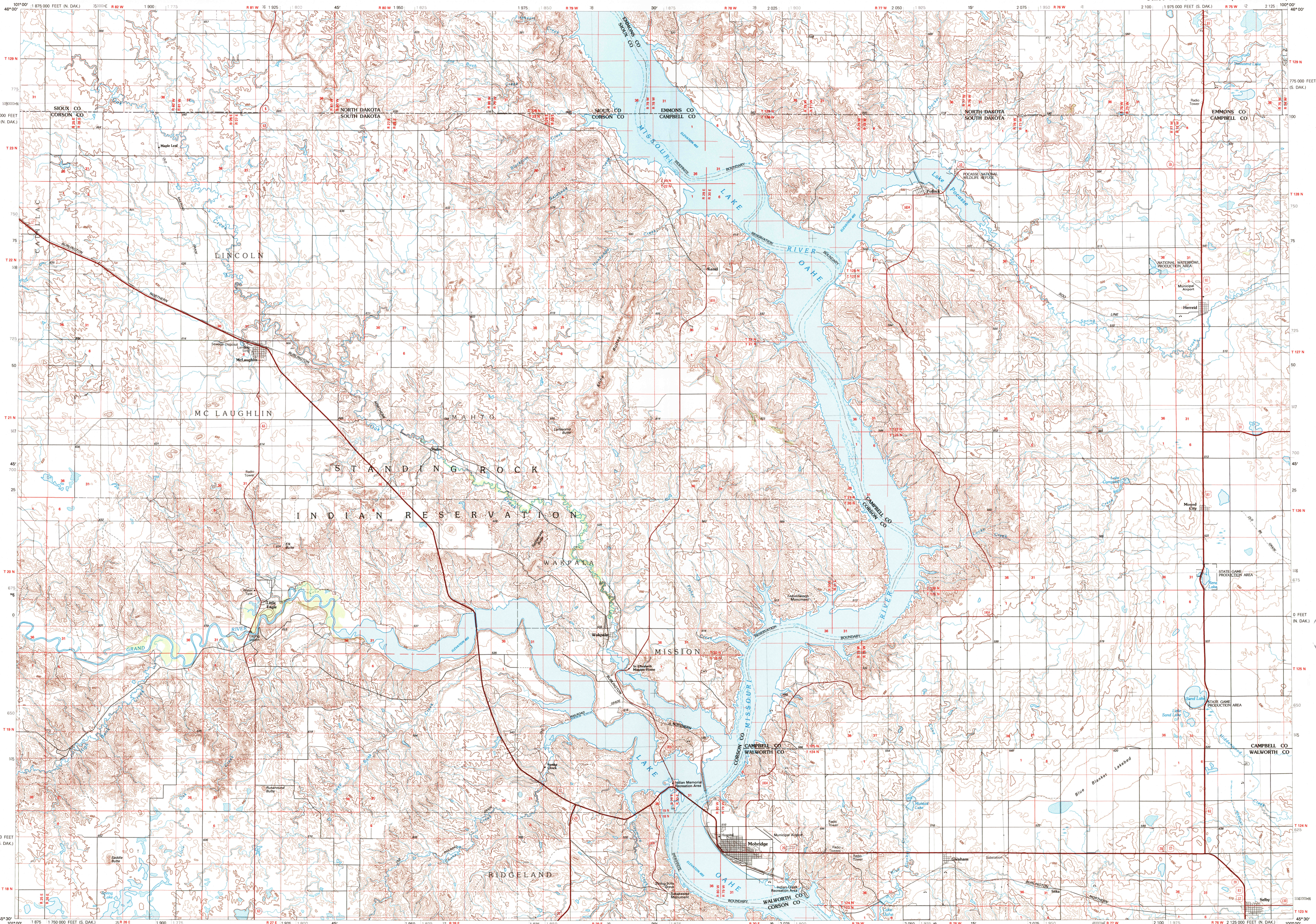
Adjoining Maps	1	2	3
1	Elgin		
2	Linton		
3	Wahpetak		
4	McIntosh		
5	Franklin		
6	Timber Lake		
7	La Plante		
8	Gettysburg		

FOR SALE BY U.S. GEOLOGICAL SURVEY
 DENVER, COLORADO 80225, OR RESTON, VIRGINIA 22092
 USGS IHD HISTORICAL MAP
 JAN 01 1989
 REC'D FILE COPY

Topographic Map Symbols

- Primary highway, hard surface
- Secondary highway, hard surface
- Light duty road, principal street, hard or improved surface
- Other road or street, trail
- Route marker: Interstate, U.S., State
- Railroad: standard gage; narrow gage
- Bridge: overpass; underpass
- Tunnel: road; railroad
- Built up area; locality; elevation
- Airport: landing field; landing strip
- National boundary
- State boundary
- County boundary
- National or State reservation boundary
- Land grant boundary
- U.S. public lands survey: range, township, section
- Range, township, section line, projected
- Power transmission line; pipeline
- Dam; dam with lock
- Cemetery; building
- Windmill; water well; spring
- Mine shaft; adit or cave; mine, quarry; gravel pit
- Campground; picnic area; U.S. location monument
- Ruins; cliff dwelling
- Distorted surface: strip mine, levee, sand
- Contours: index; intermediate; supplementary
- Bathymetric contours: index; intermediate
- Stream, lake: perennial; intermittent
- Rapids, large and small; falls, large and small
- Area to be submerged; marsh, swamp
- Land subject to controlled inundation; woodland
- Sorbs; mangrove
- Orchard; vineyard

A pamphlet describing topographic maps is available on request



MOBRIDGE, S. DAK.-N. DAK.
 45100-E1-TM-100