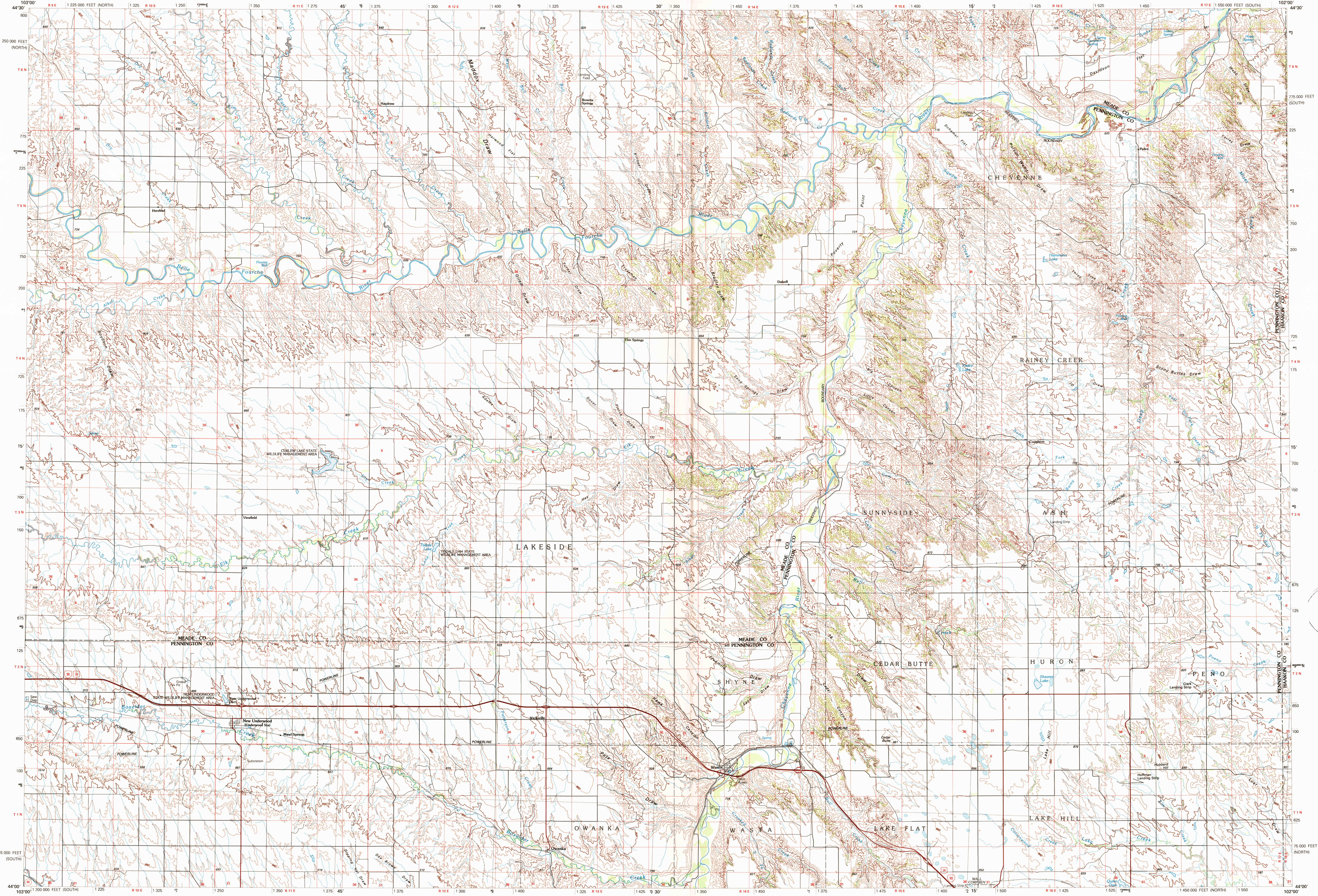


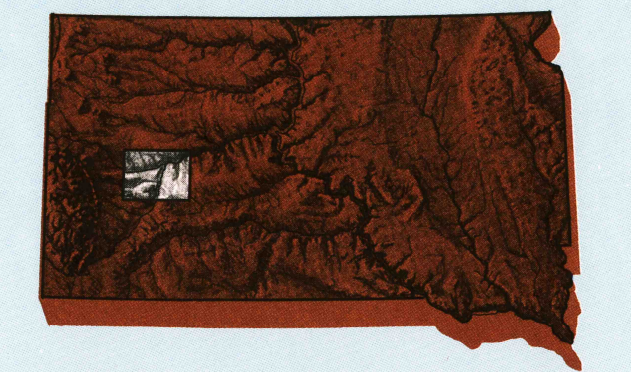
NEW UNDERWOOD, SOUTH DAKOTA

30 X 60 MINUTE SERIES (TOPOGRAPHIC)



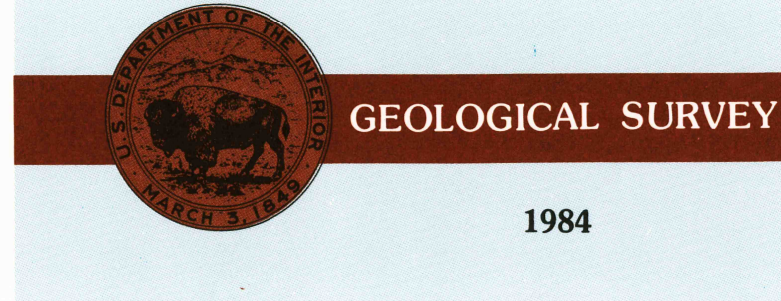
New Underwood SOUTH DAKOTA

1:100 000-scale metric topographic map



30 X 60 MINUTE QUADRANGLE SHOWING

- Contours and elevations in meters
- Highways, roads and other manmade structures
- Water features
- Woodland areas
- Geographic names



Produced by the United States Geological Survey
 Compiled from USGS 1:24 000-scale topographic maps dated 1953-1983. Planimetry revised from aerial photographs taken 1976, 1981 and other source data. Revised information not field checked. Map edited 1984
 Projection and 10 000-meter grid, zone 13. Universal Transverse Mercator 25 000-foot grid ticks based on South Dakota coordinate system, south and north zones 1927 North American Datum
 To place on the predicted North American Datum 1983, move the projection lines 6 meters north and 39 meters east
 There may be private inholdings within the boundaries of the National or State reservations shown on this map

CONTOUR INTERVAL 20 METERS
 NATIONAL GEODETIC VERTICAL DATUM OF 1929
 ELEVATIONS SHOWN TO THE NEAREST METER

THIS MAP COMPLIES WITH NATIONAL MAP ACCURACY STANDARDS

CONVERSION TABLE		DECLINATION DIAGRAM		ADJOINING MAPS		
Meters	Feet	1983	1957	1	2	3
1	3.2808	1° 15'	1° 15'	1	2	3
2	6.5617	1° 15'	1° 15'	4	5	6
3	9.8425	1° 15'	1° 15'	7	8	
4	13.1234	1° 15'	1° 15'			
5	16.4042	1° 15'	1° 15'			
6	19.6850	1° 15'	1° 15'			
7	22.9659	1° 15'	1° 15'			
8	26.2467	1° 15'	1° 15'			
9	29.5275	1° 15'	1° 15'			
10	32.8084	1° 15'	1° 15'			

To convert meters to feet multiply by 3.2808
 To convert feet to meters multiply by 0.3048

UTM grid convergence (GN) and 1984 magnetic declination (MD) at center of map
 Diagram is approximate

1	Belle Fourche
2	Camp Creek
3	Cherry Creek
4	Rapid City
5	Philip
6	Mount Rushmore
7	Walt
8	Kadoka

FOR SALE BY U.S. GEOLOGICAL SURVEY
 DENVER, COLORADO 80225, OR RESTON, VIRGINIA 22092
 APR 23 1989
 REC'D FILE COPY

Topographic Map Symbols

- Primary highway, hard surface
- Secondary highway, hard surface
- Light duty road, principal street, hard or improved surface
- Other road or street, trail
- Route marker: Interstate, U.S., State
- Railroad: standard gage; narrow gage
- Bridge; overpass; underpass
- Tunnel; road; railroad
- Ball up area; locality; elevation
- Airport; landing field; landing strip
- National boundary
- State boundary
- County boundary
- National or State reservation boundary
- Land grant boundary
- U.S. public lands survey: range, township, section
- Range, township, section line: projected
- Power transmission line: pipeline
- Dam; dam with lock
- Cemetery; building
- Well; water well; spring
- Mine shaft; sill or cave; mine, quarry; gravel pit
- Campground; picnic area; U.S. location monument
- Ruins; cliff dwelling
- Distorted surface: strip mine, lava, sand
- Contours: index; intermediate; supplementary
- Bathymetric contours: index; intermediate
- Stream, lake, perennial; intermittent
- Rapids, large and small; falls, large and small
- Area to be submerged; marsh, swamp
- Land subject to controlled inundation; woodland
- Scrub; mangrove
- Orchard; vineyard

A pamphlet describing topographic maps is available on request

SCALE 1:100 000
 1 CENTIMETER ON THE MAP REPRESENTS 1 KILOMETER ON THE GROUND
 CONTOUR INTERVAL 20 METERS

NEW UNDERWOOD, SOUTH DAKOTA
 44102-A1-TM-100
 1984