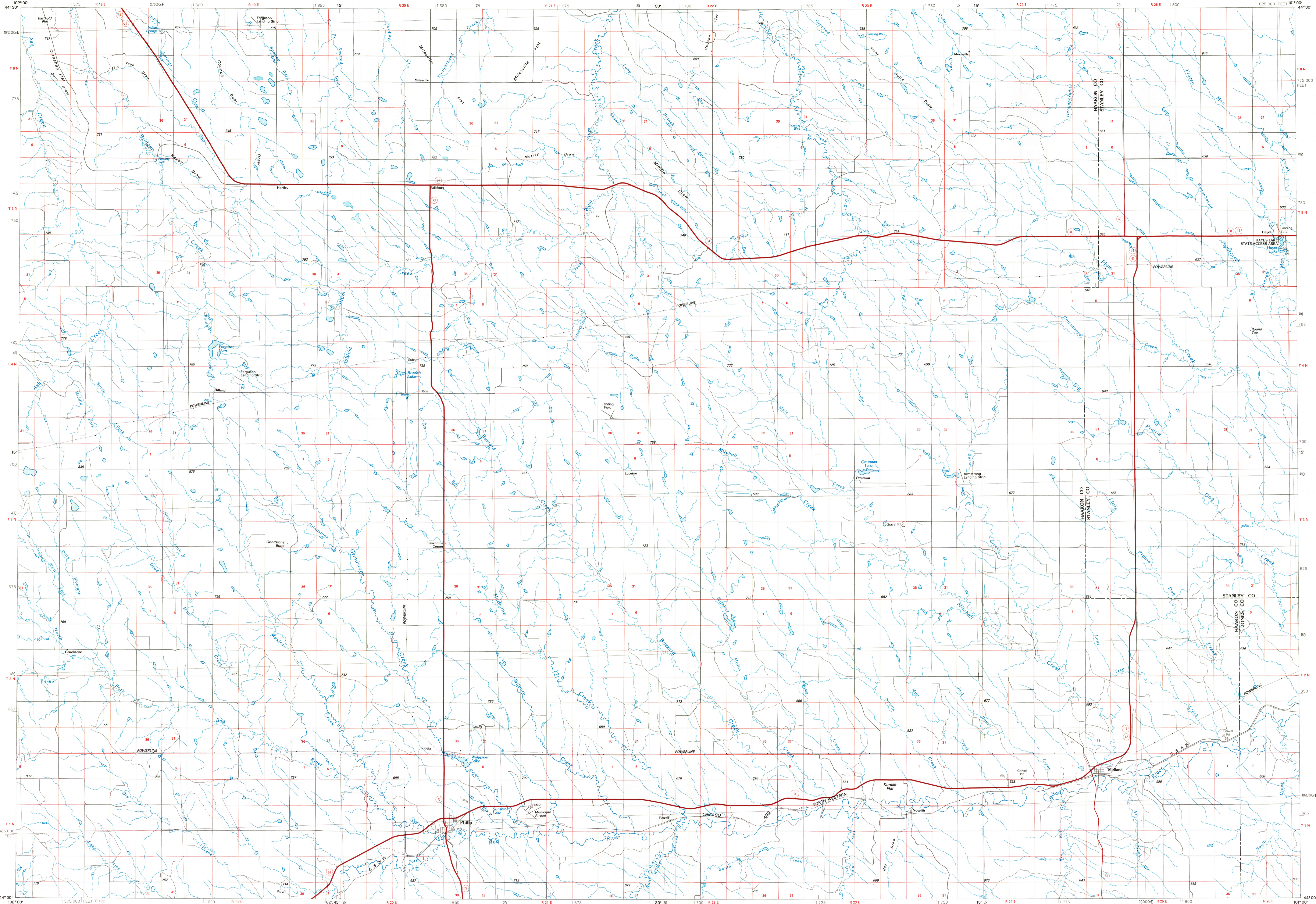


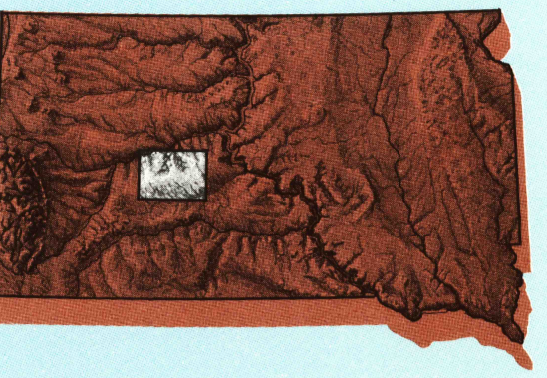
PHILIP, SOUTH DAKOTA

30 X 60 MINUTE SERIES (PLANIMETRIC)



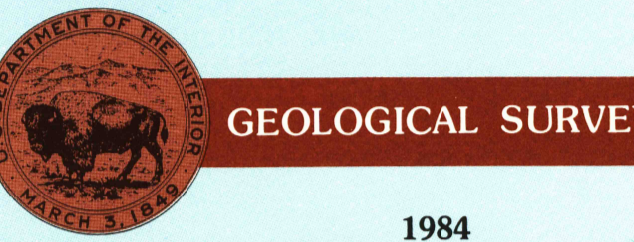
Philip SOUTH DAKOTA

1:100 000-scale planimetric map



30 X 60 MINUTE QUADRANGLE SHOWING

- Elevations in meters
- Highways, roads and other manmade structures
- Water features
- Woodland areas
- Geographic names



Produced by the United States Geological Survey  
 Compiled from USGS 1:24 000 and 1:62 500-scale topographic maps dated 1954-1983. Planimetry revised from aerial photographs taken 1976, 1982 and other source data. Revised information not field checked. Map edited 1984.  
 Projection and 10 000-meter grid, zone 14, Universal Transverse Mercator  
 25 000-foot grid ticks based on South Dakota coordinate system, south zone  
 1927 North American Datum  
 To place on the predicted North American Datum 1983, move the projection lines 6 meters north and 37 meters east  
 There may be private inholdings within the boundaries of the National or State reservations shown on this map

NATIONAL GEODETIC VERTICAL DATUM OF 1929  
ELEVATIONS SHOWN TO THE NEAREST METER

THIS MAP COMPLIES WITH NATIONAL MAP ACCURACY STANDARDS

CONVERSION TABLE		DECLINATION DIAGRAM		ADJOINING MAPS		
Meters	Feet	MAGNETIC		1	2	3
1	3.2808	180°		4	5	
2	6.5617	181°		6	7	8
3	9.8425	182°				
4	13.1234	183°				
5	16.4042	184°				
6	19.6850	185°				
7	22.9659	186°				
8	26.2467	187°				
9	29.5276	188°				
10	32.8084	189°				

To convert meters to feet multiply by 3.2808  
 To convert feet to meters multiply by 0.3048

UTM grid convergence (GN) and local magnetic declination (MN) at center of map  
 Diagram is approximate

1 Camp Creek  
 2 Cherry Creek  
 3 Ouida  
 4 New Underwood  
 5 Pierre  
 6 Wall  
 7 Kadoka  
 8 River

FOR SALE BY U.S. GEOLOGICAL SURVEY, DENVER, COLORADO 80225  
OR RESTON, VIRGINIA 22092

Topographic Map Symbols

Primary highway, hard surface	
Secondary highway, hard surface	
Light duty road, principal street, hard or improved surface	
Other road or street, track	
Road marker: Interstate, U.S. State	
Railroad: standard gage, narrow gage	
Bridge, overpass, underpass	
Tunnel: road, railroad	
Built up area, locality, elevation	
Airport: landing field, landing strip	
National boundary	
State boundary	
County boundary	
National or State reservation boundary	
Land grant boundary	
U.S. public lands survey: range, township, section	
Range, township, section line, projected	
Power transmission line, pipeline	
Dam, dam with lock	
Cemetery: building	
Windmill, water well, spring	
Mine shaft: adit or cave, mine, quarry, gravel pit	
Campground: picnic area, U.S. location monument	
Ruins: cliff dwelling	
Distorted surface: strip mine, lava, sand	
Contours: index, intermediate, supplementary	
Bathymetric contours: index, intermediate	
Stream, lake: perennial, intermittent	
Rapids, large and small; falls, large and small	
Area to be submerged; marsh, swamp	
Land subject to controlled inundation; woodland	
Scrub; mangrove	
Orchard; vineyard	

RETURN TO:  
USGS AND HISTORICAL MAP ARCHIVES

SCALE 1:100 000



PHILIP, SOUTH DAKOTA

44101-A1-PL-100

1984