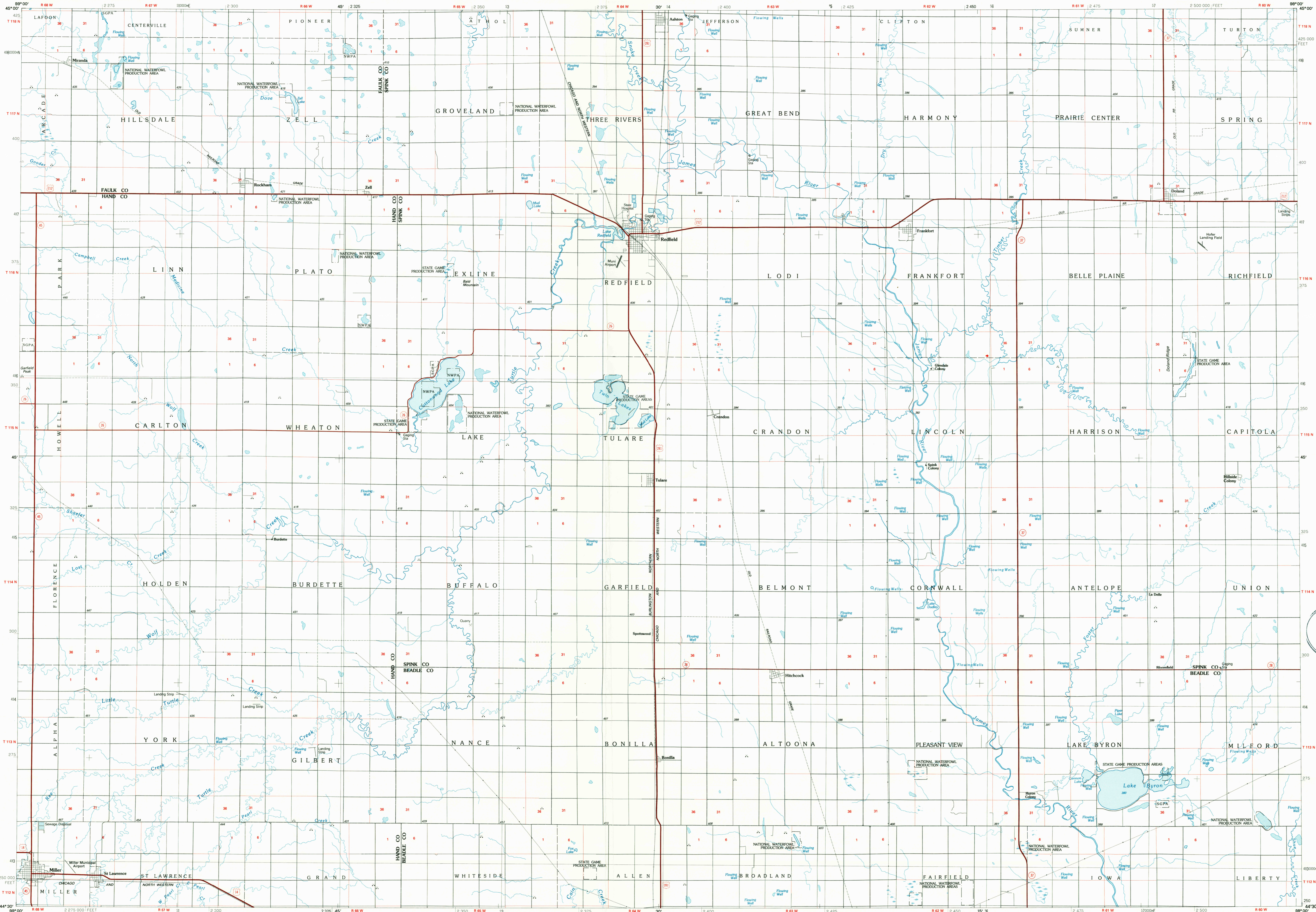


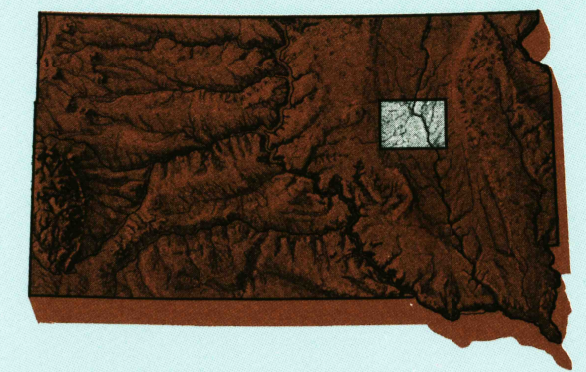
REDFIELD, SOUTH DAKOTA

30 X 60 MINUTE SERIES (PLANIMETRIC)



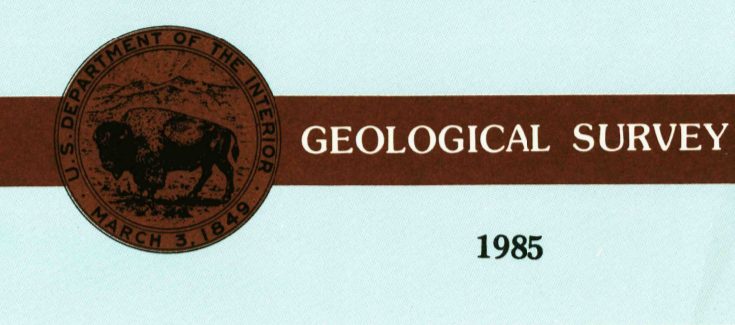
Redfield SOUTH DAKOTA

1:100 000-scale planimetric map



30 X 60 MINUTE QUADRANGLE SHOWING

- Elevations in meters
- Highways, roads and other manmade structures
- Water features
- Woodland areas
- Geographic names



Produced by the United States Geological Survey  
 Compiled from USGS 1:24 000-scale topographic maps dated 1953-1971. Planimetry revised from aerial photographs taken 1984 and other source data. Revised information not field checked. Map edited 1985  
 Projection and 10 000-meter grid, zone 14. Universal Transverse Mercator  
 25 000-foot grid ticks based on South Dakota coordinate system, north zone  
 1927 North American Datum  
 To place on the predicted North American Datum 1983, move the projection lines 6 meters north and 30 meters east  
 There may be private inholdings within the boundaries of the National or State reservations shown on this map

NATIONAL GEODETIC VERTICAL DATUM OF 1929 ELEVATIONS SHOWN TO THE NEAREST METER

THIS MAP COMPLES WITH NATIONAL MAP ACCURACY STANDARDS

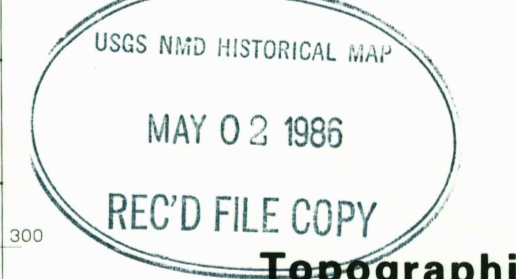
CONVERSION TABLE		DECLINATION DIAGRAM		ADJOINING MAPS		
Meters	Feet			1	2	3
1	3 280			4	5	6
2	6 561			7	8	9
3	9 842			10	11	12
4	13 123			13	14	15
5	16 404			16	17	18
6	19 685			19	20	21
7	22 966			22	23	24
8	26 247			25	26	27
9	29 528			28	29	30
10	32 809	31	32	33		

To convert meters to feet multiply by 3.2808  
 To convert feet to meters multiply by 0.3048

UTM grid convergence (GN) and 1983 magnetic declination (MD) at center of map. Diagram is approximate.

1 Gettysburg  
 2 Aberdeen  
 3 Webster  
 4 Highmore  
 5 Watertown  
 6 Big Bend Dam  
 7 Huron  
 8 De Smet

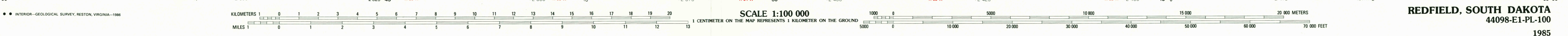
FOR SALE BY U.S. GEOLOGICAL SURVEY DENVER, COLORADO 80225, OR RESTON, VIRGINIA 22092



Topographic Map Symbols

- Primary highway, hard surface
- Secondary highway, hard surface
- Light duty road, principal street, hard or improved surface
- Other road or street, trail
- Route marker: Interstate, U.S., State
- Railroad: standard gage, narrow gage
- Bridge, overpass, underpass
- Tunnel: road, railroad
- Built up area, locality, elevation
- Airport: landing field, landing strip
- National boundary
- State boundary
- County boundary
- National or State reservation boundary
- Land grant boundary
- U.S. public lands survey: range, township, section
- Range, township, section line: protracted
- Power transmission line: pipeline
- Dam: dam with lock
- Cemetery: building
- Windmill; water well; spring
- Mine shaft; adit or cave; mine, quarry, gravel pit
- Campground; picnic area; U.S. location monument
- Ruin; cell dwelling
- Distorted surface: strip mine, lava, sand
- Contours: index, intermediate, supplementary
- Bathymetric contours: index, intermediate
- Stream, lake, perennial, intermittent
- Rapids, large and small; falls, large and small
- Area to be submerged; marsh, swamp
- Land subject to controlled inundation; woodland
- Scrub; mangrove
- Orchard; vineyard

A pamphlet describing topographic maps is available on request



REDFIELD, SOUTH DAKOTA 44098-E1-PL-100 1985