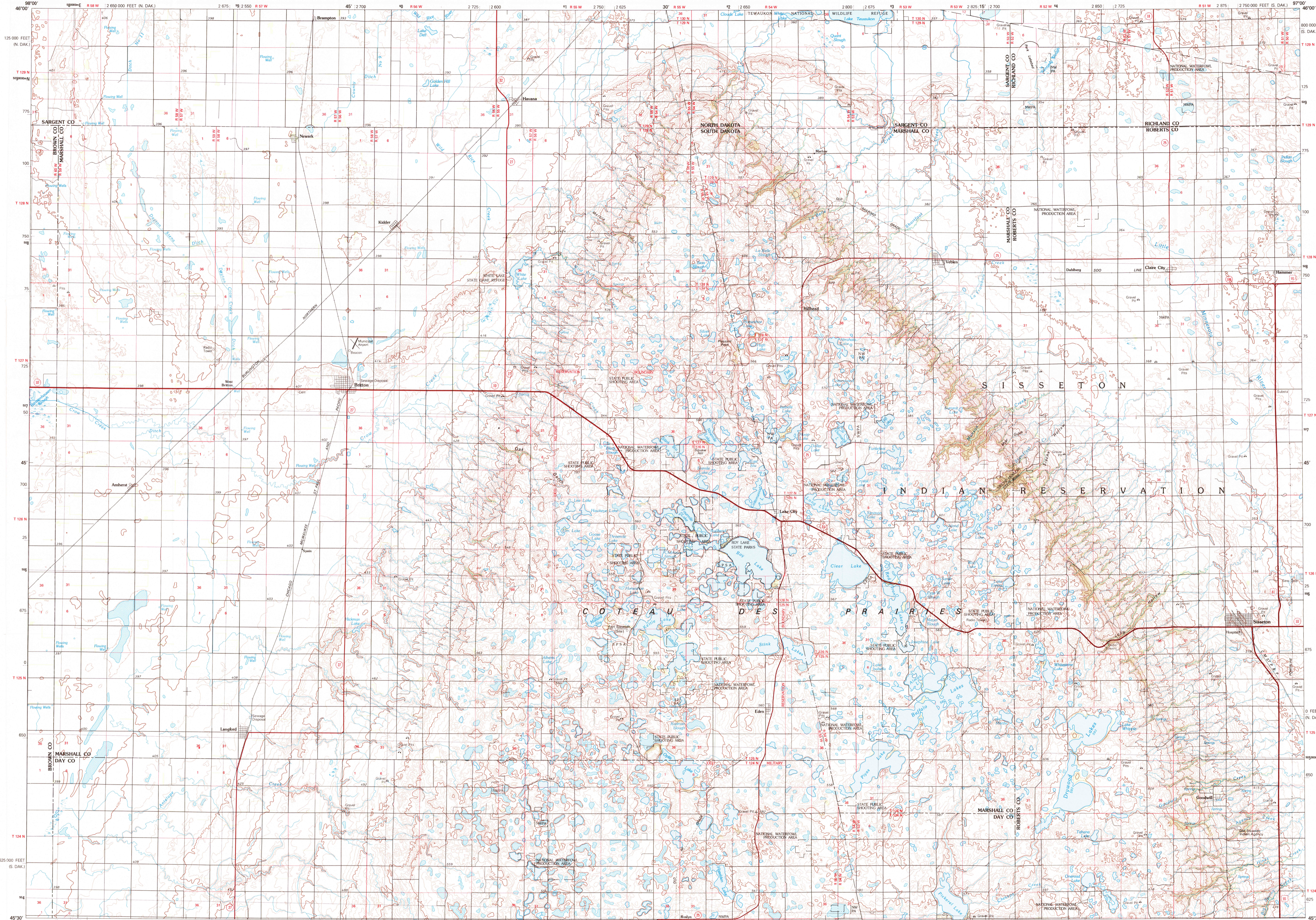


SISSETON, SOUTH DAKOTA-NORTH DAKOTA

30x60 MINUTE SERIES (TOPOGRAPHIC)

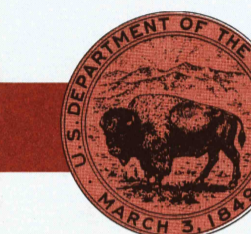


1:100 000-scale metric topographic map of Sisseton SOUTH DAKOTA-NORTH DAKOTA



30 X 60 MINUTE QUADRANGLE SHOWING

- Contours and elevations in meters
- Highways, roads and other manmade structures
- Water features
- Woodland areas
- Geographic names



GEOLOGICAL SURVEY

1979

Produced by the United States Geological Survey in cooperation with the Soil Conservation Service. Compiled from USGS 1:24 000-scale topographic maps dated 1953-1970. Flanery revised from aerial photographs taken 1977-78 and other source data. Revised information not field checked. Map edited 1979.

Projection and 10 000-meter grid, zone 14, Universal Transverse Mercator. 25 000-foot grid ticks based on South Dakota coordinate system, north zone and North Dakota coordinate system, south zone. 1927 North American Datum. To place on the predicted North American Datum 1983 move the projection lines 7 meters north and 29 meters east. There may be private inholdings within the boundaries of the National or State reservations shown on this map.

CONTOUR INTERVAL 5 METERS. NATIONAL GEODETIC VERTICAL DATUM OF 1929. ELEVATIONS SHOWN TO THE NEAREST METER.

THIS MAP COMPLIES WITH NATIONAL MAP ACCURACY STANDARDS

CONVERSION TABLE		DECLINATION DIAGRAM		ADJOINING MAPS		
Meters	Feet	Diagram showing magnetic declination (M) and grid convergence (GN) at center of map.		1	2	3
1	3.2808			4	5	
2	6.5617			6	7	8
3	9.8425					
4	13.1234					
5	16.4042					
6	19.6850					
7	22.9659					
8	26.2467					
9	29.5275					
10	32.8084					

FOR SALE BY U.S. GEOLOGICAL SURVEY, DENVER, COLORADO 80225 OR RESTON, VIRGINIA 22092

Topographic Map Symbols

- Primary highway, hard surface
- Secondary highway, hard surface
- Light duty road, principal street, hard or improved surface
- Other road or street; trail
- Route marker: Interstate; U.S. State
- Railroad: standard gage; narrow gage
- Bridge: overpass; underpass
- Tunnel: road; railroad
- Built up area; locality; elevation
- Airport; landing field; landing strip
- National boundary
- State boundary
- County boundary
- National or State reservation boundary
- Land grant boundary
- U.S. public lands survey: range, township, section
- Range, township, section line: protracted
- Power transmission line; pipeline
- Dam; dam with lock
- Cemetery; building
- Wellhead; water well; spring
- Mine shaft; salt or cave; mine; quarry; gravel pit
- Campground; picnic area; U.S. location monument
- Ruins; cliff dwelling
- Distorted surface: strip mine, lava, sand
- Contours: index; intermediate; supplementary
- Bathymetric contours: index; intermediate
- Stream, lake; perennial; intermittent
- Rapids, large and small; falls, large and small
- Area to be submerged; marsh, swamp
- Land subject to controlled inundation; woodland
- Scrub; mangrove
- Orchard; vineyard

A pamphlet describing topographic maps is available on request

SCALE 1:100 000
1 CENTIMETER ON THE MAP REPRESENTS 1 KILOMETER ON THE GROUND
CONTOUR INTERVAL 5 METERS

SISSETON, SOUTH DAKOTA-NORTH DAKOTA
N4530-W9700/30x60
1979