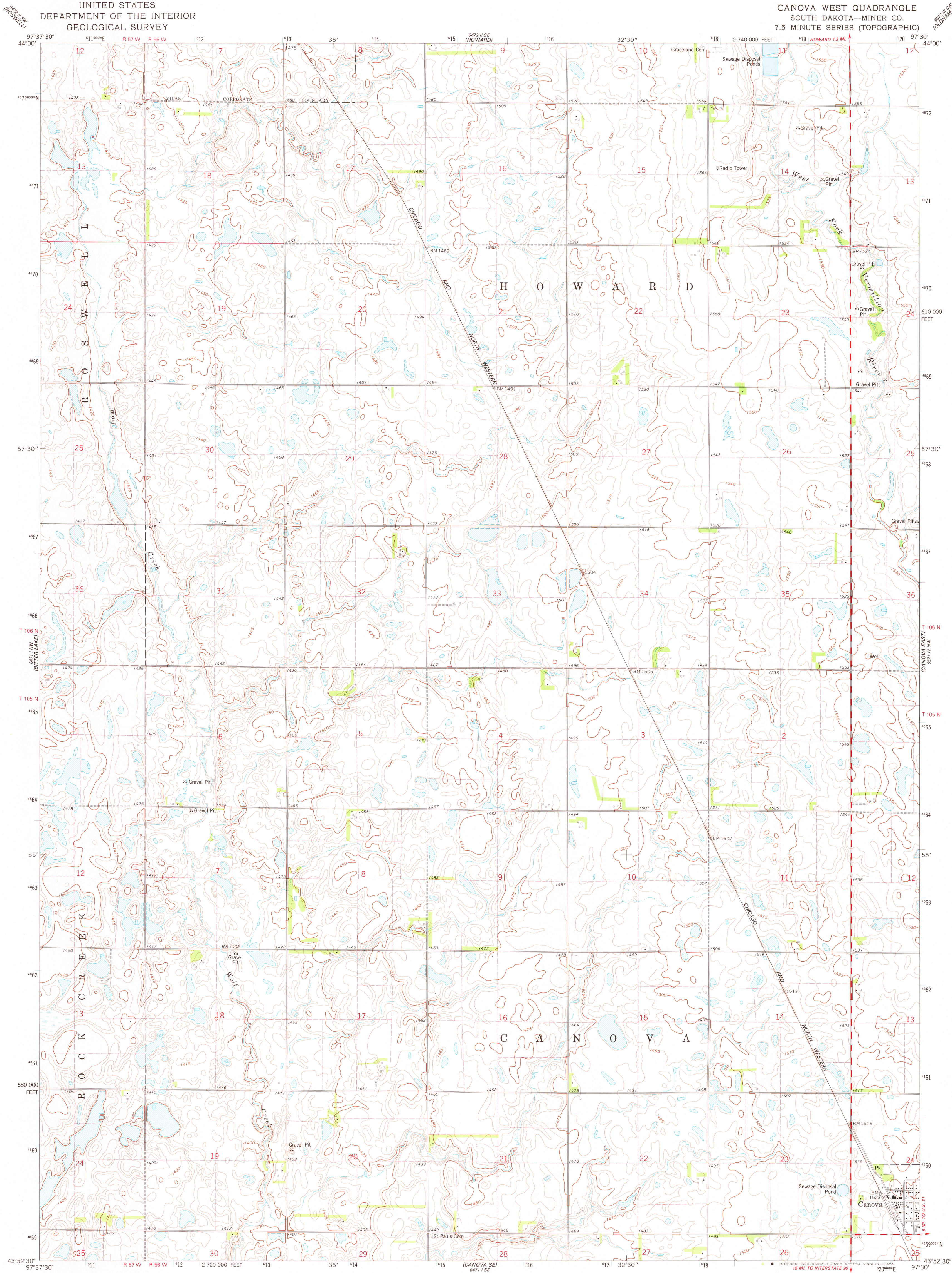


UNITED STATES
DEPARTMENT OF THE INTERIOR
GEOLOGICAL SURVEY

CANOVA WEST QUADRANGLE
SOUTH DAKOTA—MINER CO.
7.5 MINUTE SERIES (TOPOGRAPHIC)



Mapped, edited, and published by the Geological Survey
Control by USGS and NOS/NOAA
Topography by photogrammetric methods from aerial
photographs taken 1973. Field checked 1973
Projection and 10,000-foot grid ticks: South Dakota coordinate
system, south zone (Lambert conformal conic)
1000-meter Universal Transverse Mercator grid ticks,
zone 14, shown in blue. 1927 North American datum
Fine red dashed lines indicate selected fence and field lines where
generally visible on aerial photographs. This information is unchecked

UTM GRID AND 1973 MAGNETIC NORTH
DECLINATION AT CENTER OF SHEET

SCALE 1:24 000
CONTOUR INTERVAL 5 FEET
NATIONAL GEODETIC VERTICAL DATUM OF 1929

QUADRANGLE LOCATION

ROAD CLASSIFICATION
Primary highway, hard surface — Light duty road, hard or improved surface
Secondary highway, hard surface — Unimproved road
Interstate Route — U.S. Route — State Route

USGS
Historical File
Topographic Division
CANOVA WEST, S. DAK.
N4352.5—W9730.7.5
1973

AMS 6471 I NE—SERIES V873

JUN 21 1978
2800