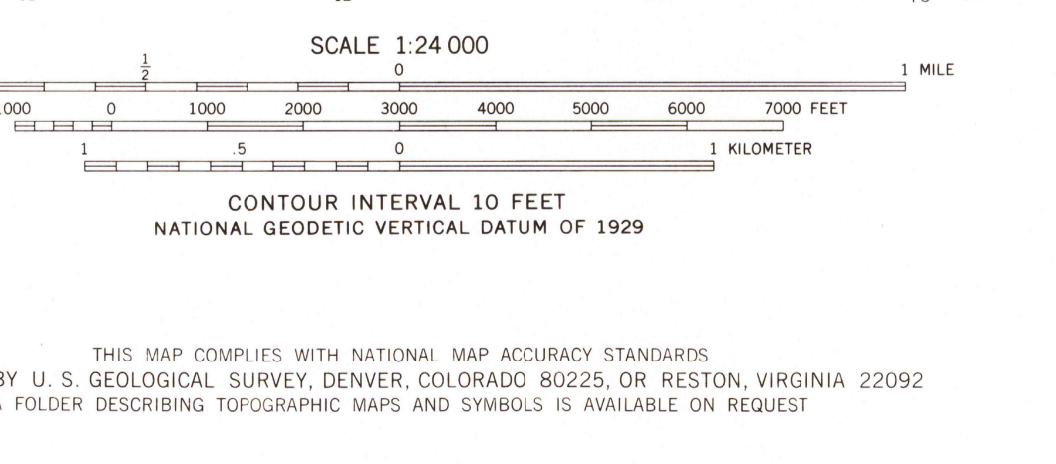
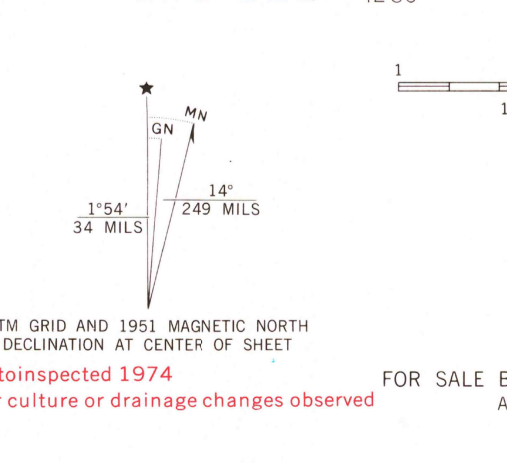


Maped, edited, and published by the Geological Survey as part of the Department of the Interior program for the development of the Missouri River Basin Control by USGS and USC&GS  
Topography from aerial photographs by Kesh plotter Aerial photographs taken 1948. Field check 1951  
Polyconic projection. 1927 North American datum 10,000-foot grid based on South Dakota coordinate system, north zone  
1000-meter Universal Transverse Mercator grid ticks zone 13, shown in blue  
To place on the predicted North American Datum 1983 move the projection lines 6 meters north and 39 meters east as shown by dashed corner ticks



ROAD CLASSIFICATION

Heavy-duty	4 LANE 16 LANE	Light-duty
Medium-duty	4 LANE 16 LANE	Unimproved dirt

U.S. Route      State Route

QUADRANGLE LOCATION

SOUTH DAKOTA

CEDAR CANYON, S. DAK.  
N4500-W10237.5/7.5

1951  
PHOTOINSPECTED 1974  
DMA 5474 II SW-SERIES V873

RETURN TO:  
USGS AND HISTORICAL MAP ARCHIVES

MAR 2 1982

1600