

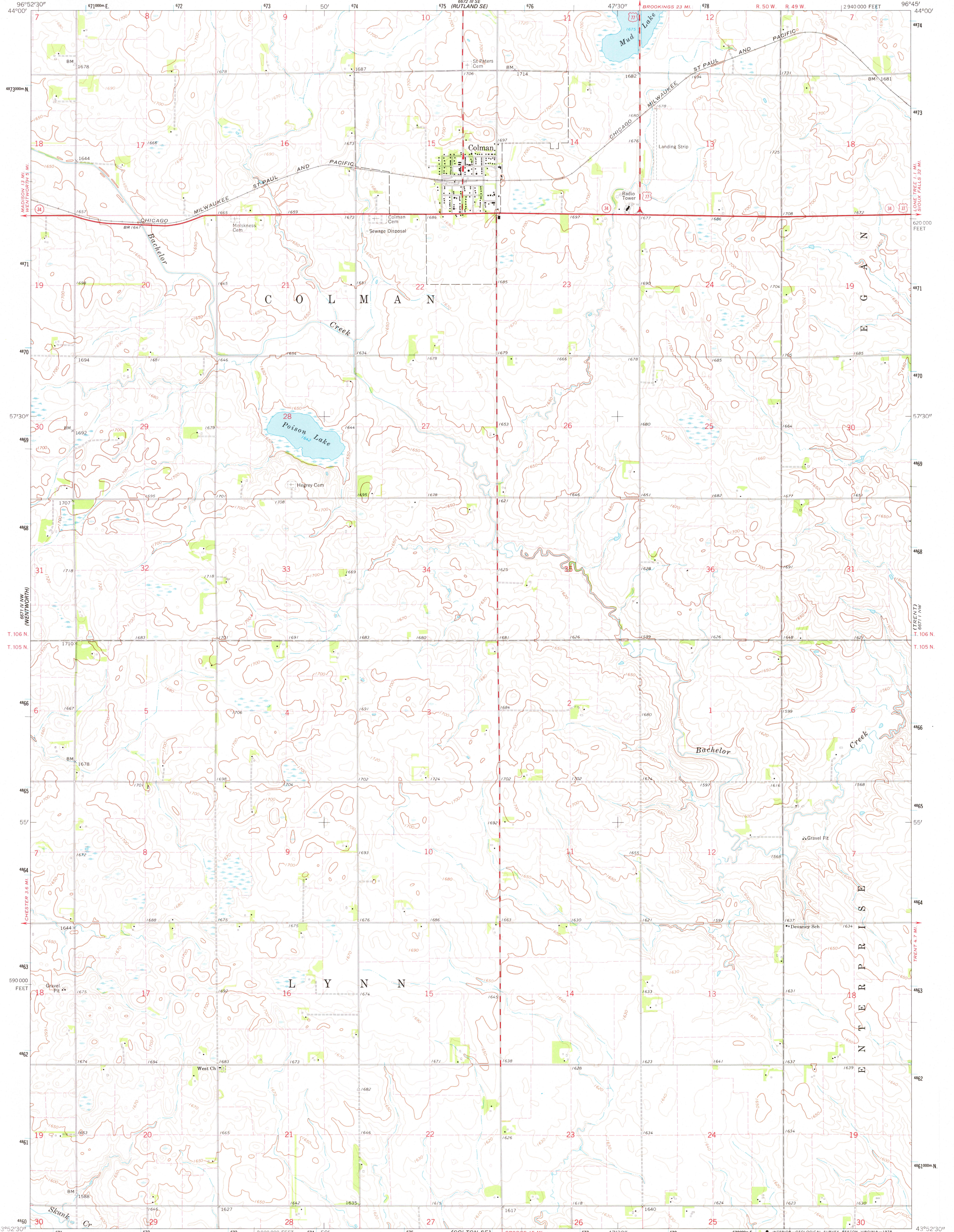
662 1/2 NW (RUTLAND)

UNITED STATES
DEPARTMENT OF THE INTERIOR
GEOLOGICAL SURVEY

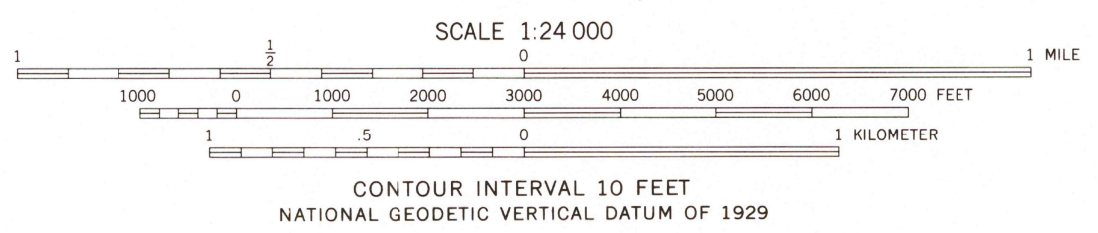
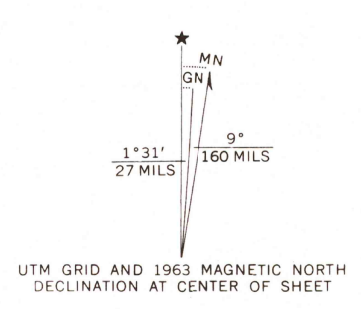
STATE OF SOUTH DAKOTA
GEOLOGICAL SURVEY
DEPARTMENT OF HIGHWAYS

COLMAN QUADRANGLE
SOUTH DAKOTA—MOODY CO.
7.5 MINUTE SERIES (TOPOGRAPHIC)

662 1/2 SW (FLANDEAU SW)



Mapped, edited, and published by the Geological Survey
Control by USGS and USC&GS
Topography by photogrammetric methods from aerial photographs taken 1961. Field checked 1963
Polyconic projection. 1927 North American datum
10,000-foot grid based on South Dakota coordinate system, south zone
1000-meter Universal Transverse Mercator grid ticks,
zone 14, shown in blue
Fine red dashed lines indicate selected fence and field lines where generally visible on aerial photographs. This information is unchecked



- ROAD CLASSIFICATION
- Heavy-duty ————
 - Medium-duty ————
 - Light-duty ————
 - Unimproved dirt ————
 - U. S. Route ————
 - State Route ————

THIS MAP COMPLIES WITH NATIONAL MAP ACCURACY STANDARDS
FOR SALE BY U.S. GEOLOGICAL SURVEY, DENVER, COLORADO 80225, OR RESTON, VIRGINIA 22092
A FOLDER DESCRIBING TOPOGRAPHIC MAPS AND SYMBOLS IS AVAILABLE ON REQUEST

FEB 1 6 1973
COLMAN, S. DAK.
N4352.5—W9645/7.5

USGS
HISTORICAL FILE
TOPOGRAPHIC DIVISION

1963
AMS 6671 IV NE—SERIES W873

130