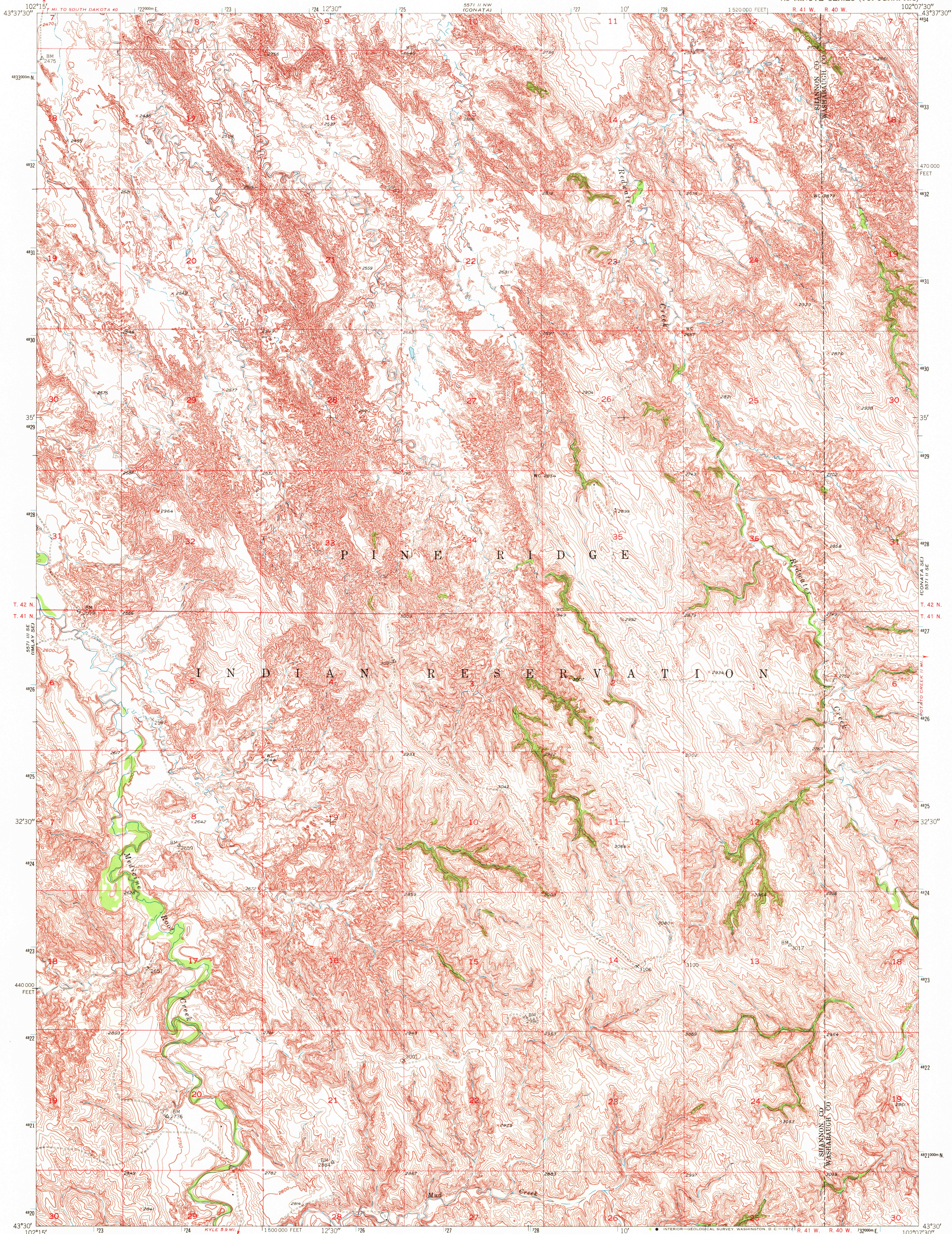
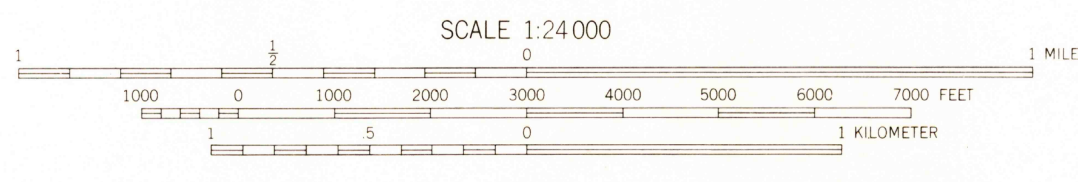
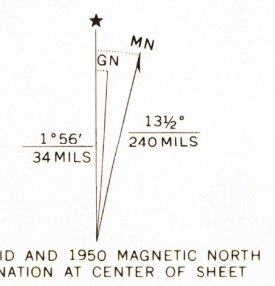


5571 II NE  
(CONATA NE)



Mapped, edited, and published by the Geological Survey as part of the Department of the Interior program for the development of the Missouri River Basin  
Control by USGS and USC&GS  
Topography from aerial photographs by multiplex methods  
Aerial photographs taken 1948. Field check 1950  
Polyconic projection. 1927 North American datum  
10,000-foot grid based on South Dakota coordinate system, south zone  
1000-meter Universal Transverse Mercator grid ticks, zone 13, shown in blue



CONTOUR INTERVAL 10 FEET  
DATUM IS MEAN SEA LEVEL

ROAD CLASSIFICATION

Heavy-duty	4 LANE 16 LANE	Light-duty	2 LANE 16 LANE
Medium-duty	2 LANE 16 LANE	Unimproved dirt	.....
U. S. Route	.....	State Route	.....

THIS MAP COMPLIES WITH NATIONAL MAP ACCURACY STANDARDS  
FOR SALE BY U. S. GEOLOGICAL SURVEY, DENVER, COLORADO 80225, OR WASHINGTON, D. C. 20242  
A FOLDER DESCRIBING TOPOGRAPHIC MAPS AND SYMBOLS IS AVAILABLE ON REQUEST

CONATA SW, S. DAK.  
N4330-W10207.5/7.5  
1950  
AMS 5571 II SW-SERIES V873

1265  
DEC 20 1971

USGS  
HISTORICAL FILE  
TOPOGRAPHIC DIVISION