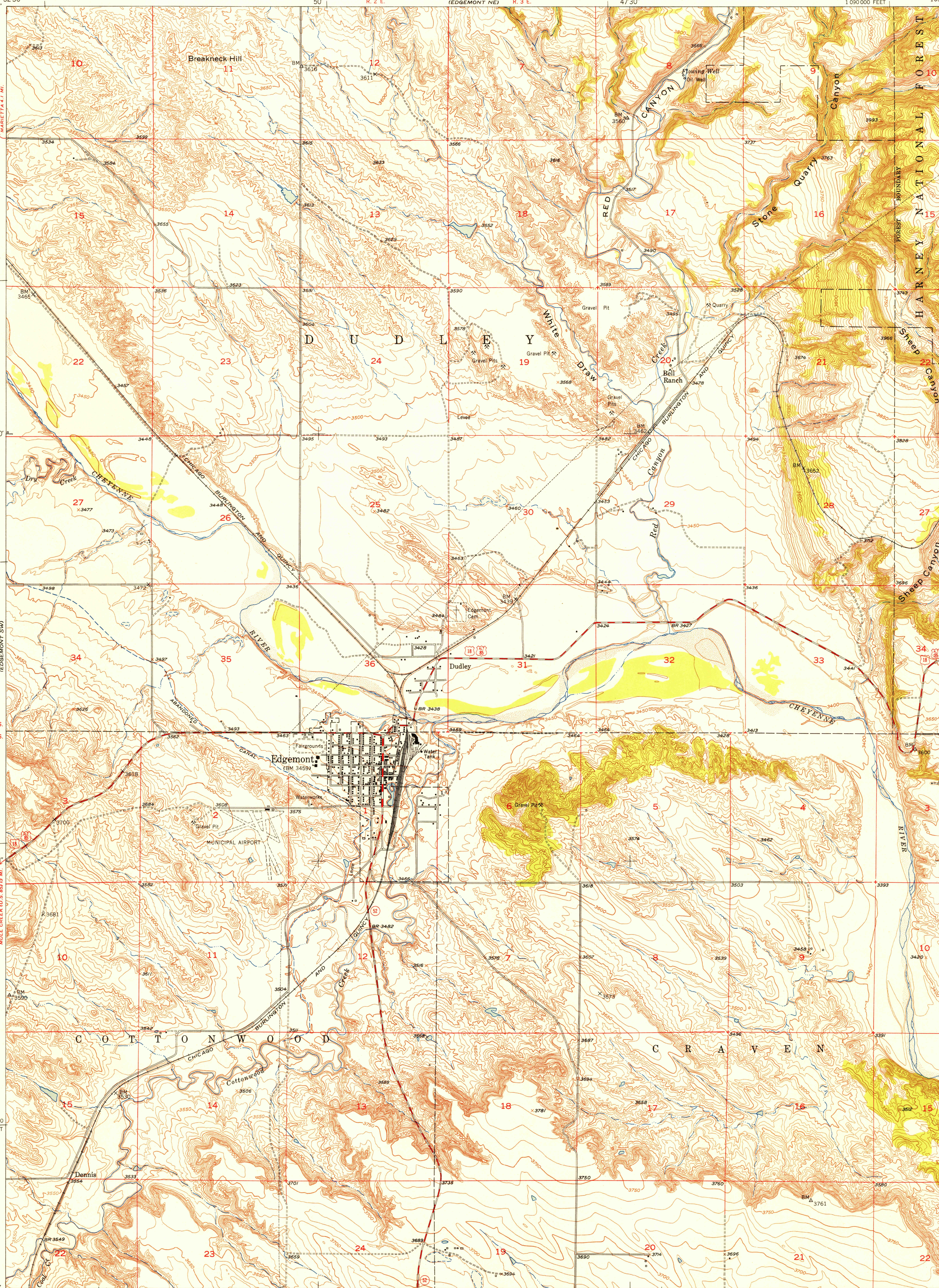
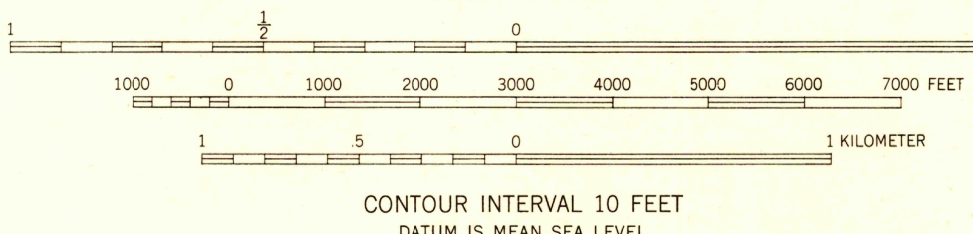


FILE COPY
Inspection and Editing

FILE COPY
Inspection and Editing



Mapped, edited, and published by the Geological Survey
as part of the Department of the Interior program
for the development of the Missouri River Basin
Control by USGS and USC&GS
Topography from aerial photographs by multiplex methods
Aerial photographs taken 1949. Field check 1950
Polyconic projection. 1927 North American datum
10,000-foot grid based on South Dakota coordinate system,
south zone



ROAD CLASSIFICATION
Heavy-duty double line Light-duty single line
Medium-duty double line Unimproved dirt dashed line
U. S. Route circle with number State Route circle with number

USGS
HISTORICAL FILE
TOPOGRAPHIC DIVISION

EDGEMONT, S. DAK.
N4315-W10345/7.5

1950

THIS MAP COMPLIES WITH NATIONAL MAP ACCURACY STANDARDS
FOR SALE BY U. S. GEOLOGICAL SURVEY, FEDERAL CENTER, DENVER, COLORADO OR WASHINGTON 25, D. C.
A FOLDER DESCRIBING TOPOGRAPHIC MAPS AND SYMBOLS IS AVAILABLE ON REQUEST