

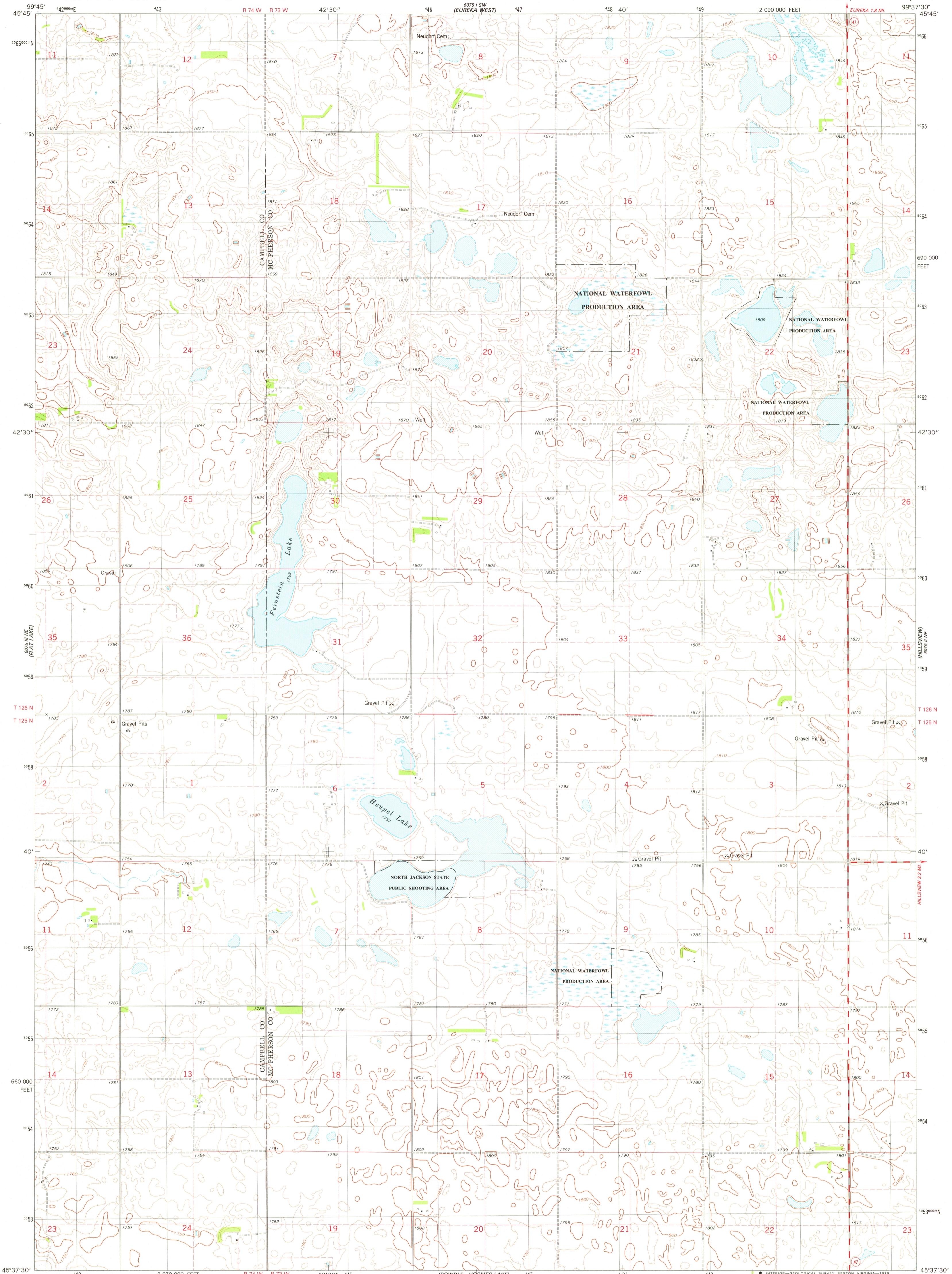
8024 5E  
MUSKIE LAKE

UNITED STATES  
DEPARTMENT OF THE INTERIOR  
GEOLOGICAL SURVEY

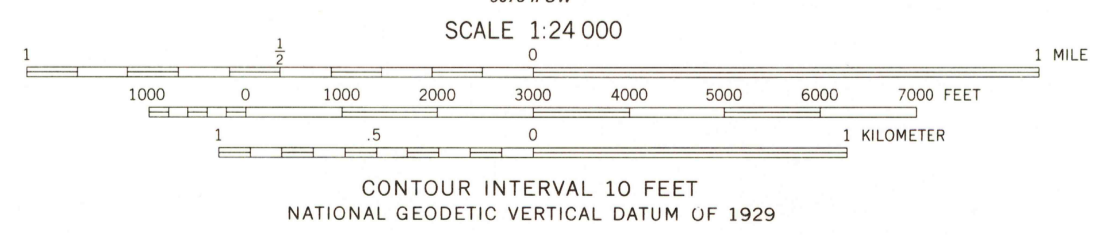
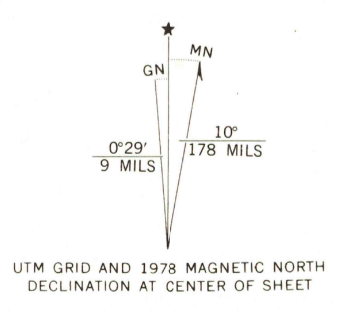


FEINSTEIN LAKE QUADRANGLE  
SOUTH DAKOTA  
7.5 MINUTE SERIES (TOPOGRAPHIC)

8024 5E  
EUREKA 1.8 MI  
EUREKA 2.5 MI



Mapped, edited, and published by the Geological Survey  
Control by USGS and NOS/NOAA  
Topography by photogrammetric methods from aerial photographs taken 1973. Field checked 1974. Map edited 1978  
Projection and 10,000-foot grid ticks: South Dakota coordinate system, north zone (Lambert conformal conic)  
1000-meter Universal Transverse Mercator grid, zone 14 1927 North American datum  
Fine red dashed lines indicate selected fence and field lines where generally visible on aerial photographs.  
This information is unchecked



ROAD CLASSIFICATION  
Primary highway, hard surface  
Secondary highway, hard surface  
Unimproved road  
Interstate Route  
U. S. Route  
State Route  
Light duty road, hard or improved surface  
Unimproved road  
Interstate Route  
U. S. Route  
State Route

THIS MAP COMPLIES WITH NATIONAL MAP ACCURACY STANDARDS  
FOR SALE BY U.S. GEOLOGICAL SURVEY, DENVER, COLORADO 80225, OR RESTON, VIRGINIA 22092  
A FOLDER DESCRIBING TOPOGRAPHIC MAPS AND SYMBOLS IS AVAILABLE ON REQUEST

USGS  
Historical File  
Topographic Division  
FEINSTEIN LAKE, S. DAK.  
N4537.5-W9937.5/7.5  
1978

AMS 6075 II NW-SERIES V873

MAY 01 1979  
2800