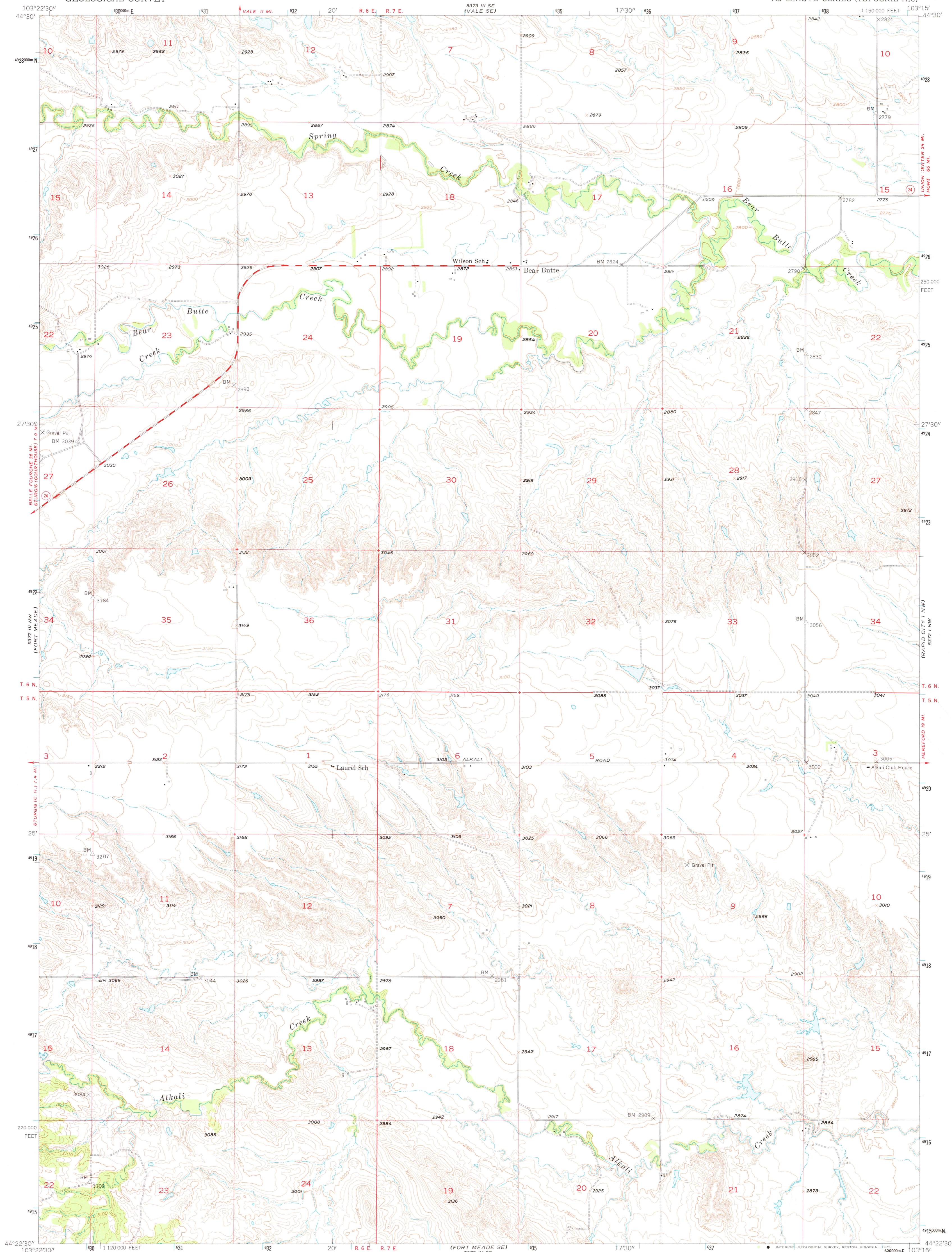
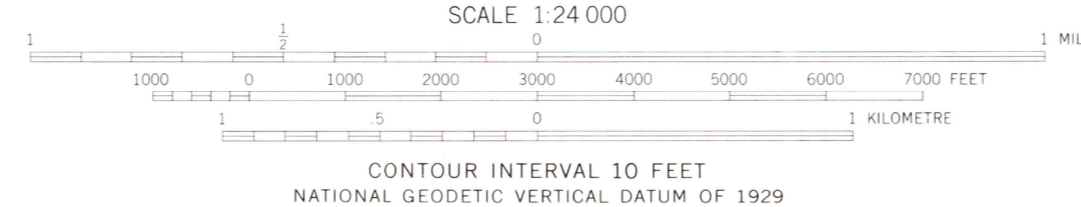
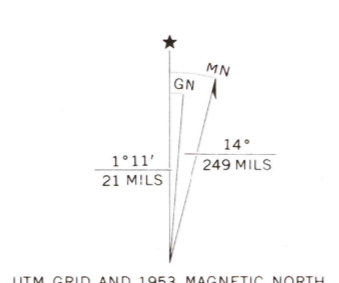


5373 III SW
(VALE)

5373 III SW
(VOLUNTEER)



Mapped, edited, and published by the Geological Survey
Control by USGS and USC&GS
Topography from aerial photographs by multiplex methods
Aerial photographs taken 1952. Field check 1953
Polyconic projection. 1927 North American datum
10,000-foot grid based on South Dakota coordinate system,
north zone
1000-metre Universal Transverse Mercator grid ticks,
zone 13, shown in blue



CONTOUR INTERVAL 10 FEET
NATIONAL GEODETIC VERTICAL DATUM OF 1929



ROAD CLASSIFICATION

| | | |
|-------------|---------------|-----------------|
| Heavy-duty | 4 LANE 4 LANE | Light-duty |
| Medium-duty | 2 LANE 2 LANE | Unimproved dirt |
| | U. S. Route | State Route |

THIS MAP COMPLIES WITH NATIONAL MAP ACCURACY STANDARDS
FOR SALE BY U. S. GEOLOGICAL SURVEY, DENVER, COLORADO 80225, OR RESTON, VIRGINIA 22092
A FOLDER DESCRIBING TOPOGRAPHIC MAPS AND SYMBOLS IS AVAILABLE ON REQUEST

USGS
Historical File
Topographic Division
FORT MEADE NE, S. DAK.
N 4422.5-W 10315.7.5
1953
AMS 5372 IV NE—SERIES V873

APR 17 1975

1625