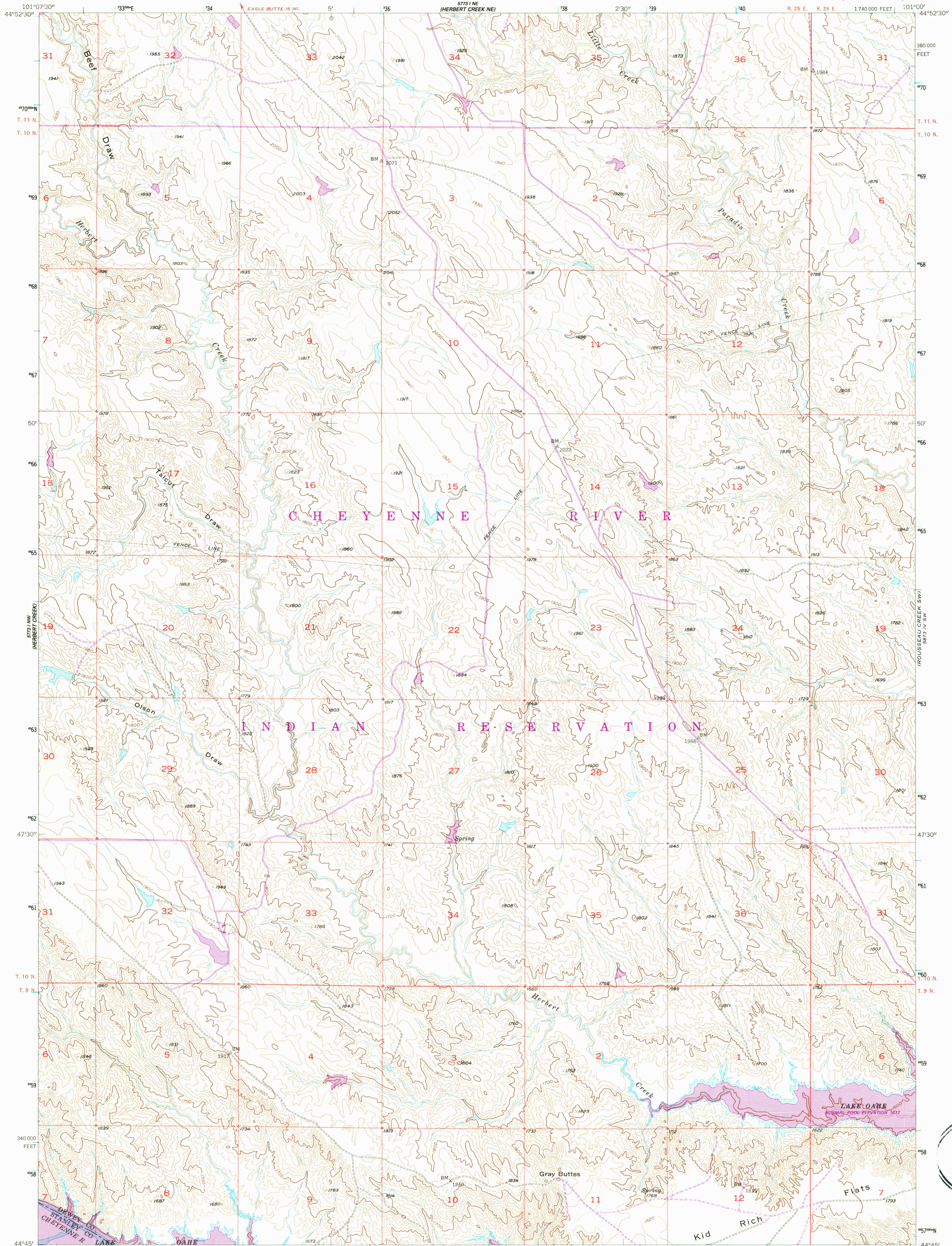
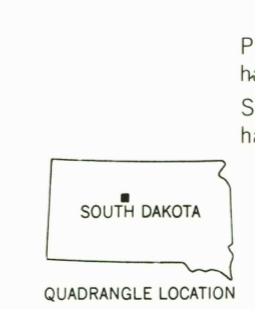
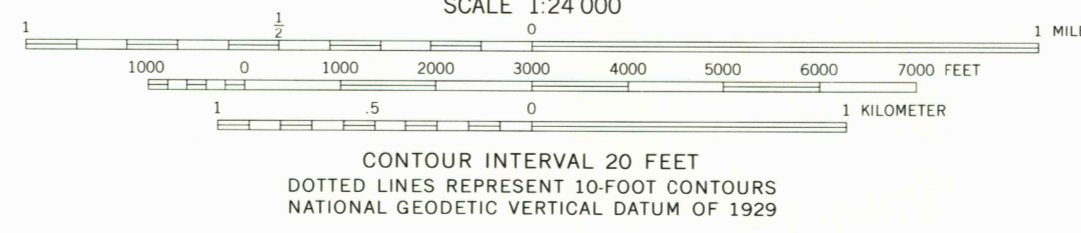
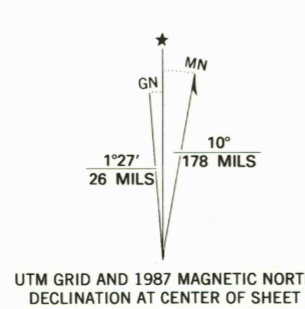


UNITED STATES
DEPARTMENT OF THE INTERIOR
GEOLOGICAL SURVEY

HERBERT CREEK SE QUADRANGLE
SOUTH DAKOTA
7.5 MINUTE SERIES (TOPOGRAPHIC)



Mapped, edited, and published by the Geological Survey as part of the Department of the Interior program for the development of the Missouri River Basin Control by USGS and NOS/NOAA. Topography from aerial photographs by multiplex methods. Aerial photographs taken 1948. Field check 1956. Polyconic projection. 1927 North American Datum 10,000-foot grid based on South Dakota coordinate system, north zone. 1000-meter Universal Transverse Mercator grid ticks, zone 14, shown in blue. To place on the predicted North American Datum 1983, move the projection lines 6 meters north and 36 meters east as shown by dashed corner ticks. There may be private inholdings within the boundaries of the National or State reservations shown on this map. Areas covered by dashed light-blue pattern are subject to controlled inundation.



ROAD CLASSIFICATION

Primary highway, hard surface	Light duty road, hard or improved surface
Secondary highway, hard surface	Unimproved road
Interstate Route	U. S. Route
	State Route

HERBERT CREEK SE. S. DAK.
44101-G1-TF-024
1956
PHOTOREVISED 1987
DMA 5773 1 SE-SERIES V873

THIS MAP COMPLIES WITH NATIONAL MAP ACCURACY STANDARDS FOR SALE BY U. S. GEOLOGICAL SURVEY, DENVER, COLORADO 80225, OR RESTON, VIRGINIA 22092. A FOLDER DESCRIBING TOPOGRAPHIC MAPS AND SYMBOLS IS AVAILABLE ON REQUEST.

Revisions shown in purple compiled from aerial photographs taken 1984 and other sources. This information not field checked. Map edited 1987.

USGS NHD HISTORICAL MAP
DEC 21 1987
REC'D FILE COPY