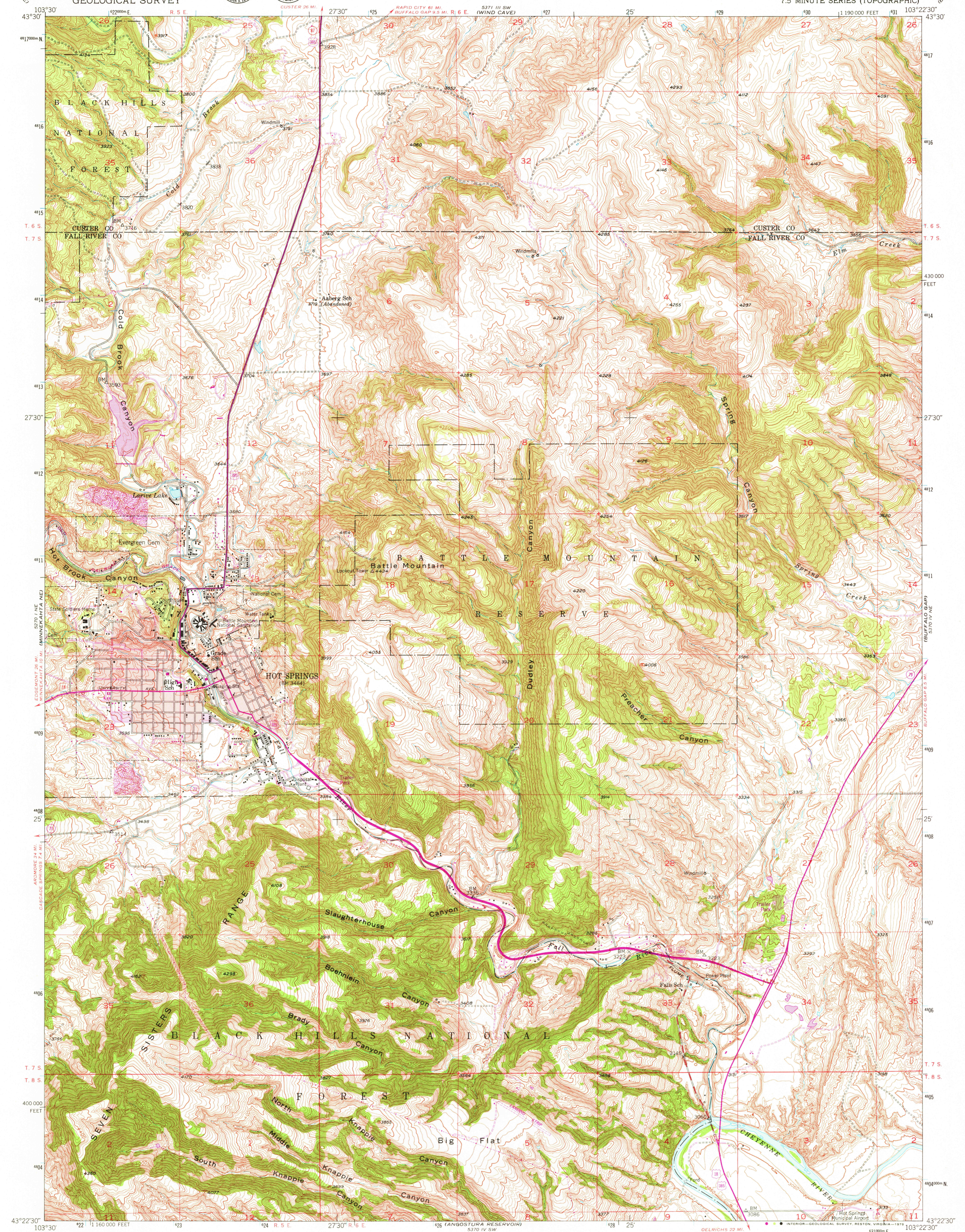


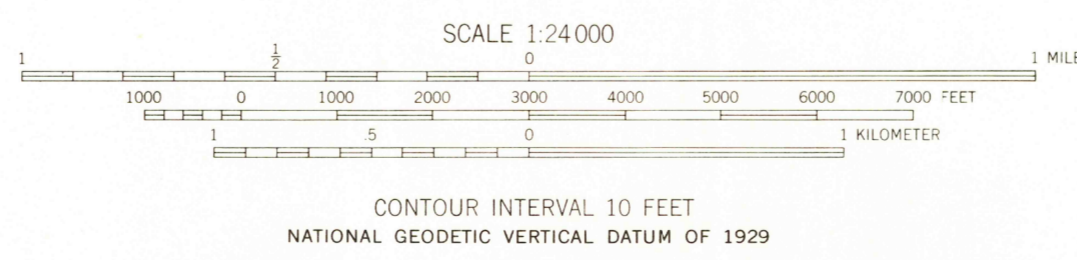
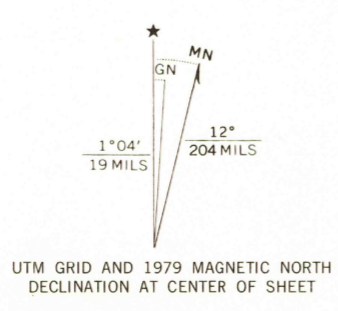


371 1/2 E (BOLAND RIDGE)

321 1/2 E (SPRING)



Mapped, edited, and published by the Geological Survey as part of the Department of the Interior program for the development of the Missouri River Basin. Control by USGS and US&CGS. Topography from aerial photographs by multiplex methods. Aerial photographs taken 1948. Field check 1950. Polyconic projection. 1927 North American datum 10,000-foot grid based on South Dakota coordinate system, south zone. Red tint indicates areas in which only landmark buildings are shown. 1000 meter Universal Transverse Mercator grid ticks, zone 13, shown in blue.



ROAD CLASSIFICATION

| | |
|-------------|-----------------|
| Heavy-duty | Light-duty |
| Medium-duty | Unimproved dirt |
| U.S. Route | State Route |



USGS Historical File Topographic Division
HOT SPRINGS, S. DAK.
N4322.5-W10322.5/7.5
1950
PHOTOREVISED 1979
AMS 5370 IV NW-SERIES V873

THIS MAP COMPLIES WITH NATIONAL MAP ACCURACY STANDARDS FOR SALE BY U.S. GEOLOGICAL SURVEY, DENVER, COLORADO 80225, OR RESTON, VIRGINIA 22092. A FOLDER DESCRIBING TOPOGRAPHIC MAPS AND SYMBOLS IS AVAILABLE ON REQUEST.

Revisions shown in purple and woodland compiled from aerial photographs taken 1976 and other source data. This information not field checked. Map edited 1979. Purple tint indicates extension of urban areas.

MAY 11 1979

1900